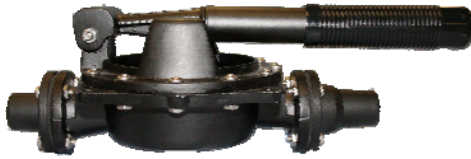




## Guzzler® Hand Pump GH-3400A



- Rugged, epoxy-coated all-aluminum body
- Accommodates 1/2" - 1-1/4" hose
- 10 GPM
- Rugged aluminum handle
- Clamp ring adjusts to 12 different handle orientations
- Available with horizontal or vertical handle
- Epoxy-coated aluminum clamp ring with stop brackets prevents over-stroking

### Performance

<b>Flow Rate</b>	Per minute <sup>1</sup> : 10 Gal (37.9L) Per stroke: 0.44 Qt (0.42L)
<b>Max Lift</b>	12 ft (3.7 m)
<b>Max Head</b>	12 ft (3.7 m)
<b>Max Pressure</b>	20 psi (1.4 kg/cm <sup>2</sup> )
<b>Max Service Temp</b>	190°F (88°C)

<sup>1</sup>: at 90 cpm

### Available Ports

	in	1/2	3/4	1	1-1/4
	cm	1.27	1.91	2.54	3.18
<b>Hose (Smooth)</b>				S	•
<b>NPT Female (Tapped)</b>		•	•		
<b>NPT Male (Threaded)</b>			•	•	

S Standard • Optional

### Specifications / Options

<b>Body &amp; Ports *</b>	Epoxy-coated Aluminum (Black)
<b>Clamp Ring</b>	Epoxy-coated Aluminum with Stop Brackets (Black)
<b>Handle</b>	Aluminum: Horizontal/Black, Vertical (Removable)/Silver
<b>Valves *</b>	Flapper, Duckbill, Umbrella
<b>Diaphragm *</b>	Buna-N, Buna-N Double Sided, Neoprene, Viton, EPDM, Silicone
<b>Clevis/Button Assembly *</b>	All Stainless Steel, SS Washer + Aluminum Clevis, Delrin Plastic
<b>Internal Spring *</b>	None, Lightweight, Standard, Heavy-Duty (all stainless steel)
<b>Other</b>	Aluminum mounting standoffs, Thru-Deck Mounting Kit (for vertical handle only)

\* In contact with fluid

### Clamp Ring

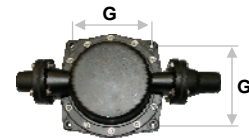
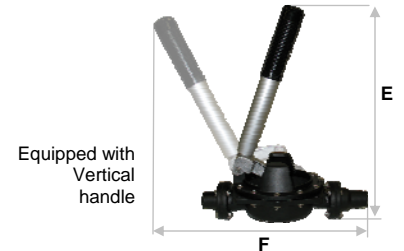
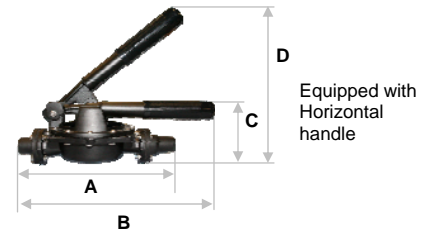
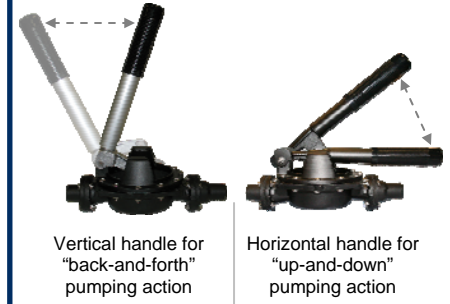


Epoxy-coated Aluminum Clamp Ring with Stop Brackets limits upward travel of pump handle to prevent over-stroking

### Mounting Option



Available with optional aluminum standoffs for convenient mounting to floor or panel



	in	cm
<b>A</b>	10-1/16	25.6
<b>B</b>	12-3/4	32.4
<b>C</b>	4-1/4	10.8
<b>D</b>	11-1/2	29.2
<b>E</b>	13	33.0
<b>F</b>	12-1/2	31.8
<b>G</b>	5	12.7
<b>Mounting Holes</b>	1/4	0.64
<b>Bolt Circle Diam.</b>	6-1/8	15.6
<b>Weight (w/Horiz. Hndl.)</b>	2.60 lb	1.18 kg
<b>Weight (w/Vert. Hndl.)</b>	2.70 lb	1.22 kg

### Valve Options

**Flapper** — General purpose liquid transfer



**Duckbill** — For dirty liquid and sewage. Permits mounting in any position.



**Umbrella** — Most efficient for pumping clean liquid. Also used for air and vacuum service.



# Guzzler® Hand Pump GH-3400A



**Example: GH-3400A-211-34-5050-00**

- Guzzler Hand Pump
- Model style #3400A: Aluminum Body, Opposite Side Ports
- Horizontal Handle (Black)
- Buna-N Flapper Valves
- Buna Diaphragm
- Stainless Steel Clevis/Button Assembly
- Epoxy-coated Aluminum Clamp Ring with Stop Brackets
- Inlet: 1" Smooth
- Outlet: 1" Smooth
- No Spring

Guzzler Product	
Option	Code
Hand Pump	GH

Handle	
Option	Code
Horizontal/Black	-2
Vertical/Silver (Removable)	-4

Diaphragm	
Option	Code
Buna Nitrile	1
Buna-N 3-Ply	2
Neoprene	3
Viton	4
EPDM	5
Silicone	7

Clamp Ring	
Option	Code
Epoxy-coated Alum w/Stop Brackets	4

Internal Spring	
Option	Code
No Spring	-00
Std Weight SS	-10
Lightweight SS	-20
Heavy Duty SS	-30

**GH -3400A -2 1 1 -3 4 -50 50 -00**

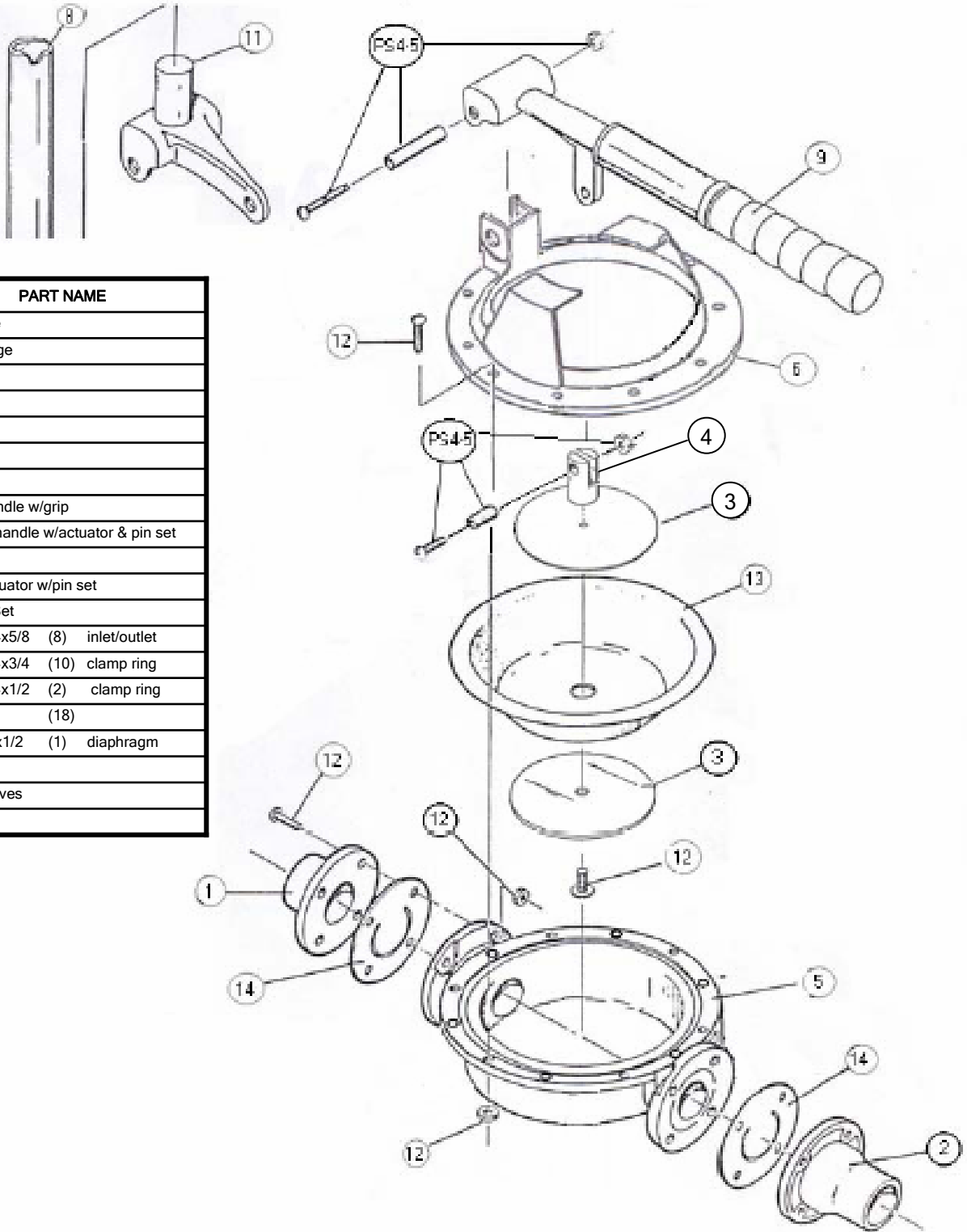
Style (Family)	
Option	Code
Aluminum, Opp. Side Ports	-3400A

Valves	
Option	Code
Flapper (Buna-N)	1
Flapper (White Buna)	2
Flapper (Neoprene)	3
Flapper (Viton)	4
Flapper (EPDM)	5
Duckbill (Buna-N)	6
Umbrella (Silicone)	7

Clevis/Button Assembly	
Option	Code
Delrin Plastic	-1
Stainless Steel	-3
SS Washer & Alum Clevis	-4

Hose Connections		
Option	Code	
	Inlet	Outlet
1/2" NPT Tapped	-31	31
3/4" NPT Tapped	-41	41
3/4" NPT Threaded	-42	42
1" Smooth	-50	50
1" NPT Threaded	-52	52
1-1/4" Smooth	-70	70





ITEM	PART NAME
1	Inlet Flange
2	Outlet Flange
3	Button (2)
4	Clevis
5	Body
6	Clamp Ring
7	
8	Vertical Handle w/grip
9	Horizontal handle w/actuator & pin set
10	
11	Vertical Actuator w/pin set
12	Hardware Set
	PPH10-24x5/8 (8) inlet/outlet
	PPH10-24x3/4 (10) clamp ring
	PPH10-24x1/2 (2) clamp ring
	HN10-24 (18)
	TH1/4-20x1/2 (1) diaphragm
13	Diaphragm
14	Flapper Valves
PS4-5	Pin Set



## Guzzler® GH-3400

930 Waterman Avenue East Providence, RI 02914  
 Ph: 888-438-1110 Fax: 401-438-2317  
[www.thebosworthco.com](http://www.thebosworthco.com)