

29060-0000

- For Jabsco manual to electric toilet conversion units model 29200 series
- Allows the Jabsco conversion unit to be fitted to many marine toilets

Replaces standard macerator housing on Jabsco conversion unit to fit Brydon Boy and PAR 59128, RM69, Mansfield and Sealand 751, Simpson Lawrence 444, standard and large bowl toilets.

Features

- ADAPTOR COMPLETELY REPLACES the standard macerator housing that forms part of all models of the Jabsco manual to electric conversion.
- DESIGNED FOR USER INSTALLATION
- NO SPECIAL TOOLS REQUIRED
- SUPPLIED COMPLETE WITH NEW GASKETS

Applications

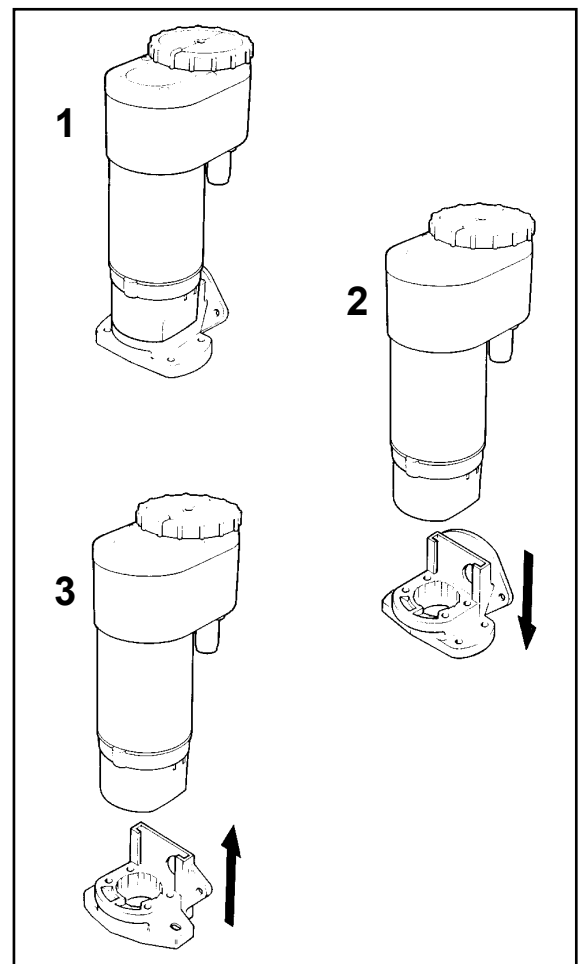
Designed for use with Jabsco 29200 series manual to electric conversions 12 and 24 volt models.

Specifications

94mm long x 74mm wide x 59mm high
(3 ¾ x 3 x 2 ¼ in).

Weight 110g (4oz)

29060-0000 Adaptor for 12 and 24 volt models



Installation Instructions

NOTE : Replace the standard macerator housing with the adaptor **before** you start to install the conversion on your toilet.

1. PREPARATION

Your Jabsco Adaptor is designed to be installed by the user and no special tools are needed.

2. REMOVING EXISTING MACERATOR HOUSING

- Keep all screws, which will be re-used to fit the Adaptor.
- Make a mark across the joint between the motor assembly (key 2) and the waste pump body (key 5) that will enable you to realign them later.
- Remove the 4 long screws (key 13) that secure the macerator housing (key 15) to the waste pump body (key 5) and notice that the screws are of 2 different lengths.
- Pull the macerator housing (key 15) off the waste pump body (key 5), remove and keep the O ring (key 14).
- Remove the exposed paper gasket that you can see (key 7) and throw it away.

3. FITTING ADAPTOR

- Fit one of the 2 new paper gaskets supplied (key 7).
- Replace the O ring (key 14) in position in the groove on the waste pump body (key 5).
- Push on the Adaptor.
- Using the shorter 2 of the 4 screws (key 13) secure the Adaptor to the waste pump body (key 5).
- Align the waste pump assembly to the motor

assembly (key 2) using your mark, so that the discharge flange is on the same side of the motor as the entry of red and black wires, before using the 2 longer screws (key 13) to secure the waste pump assembly to the motor assembly.

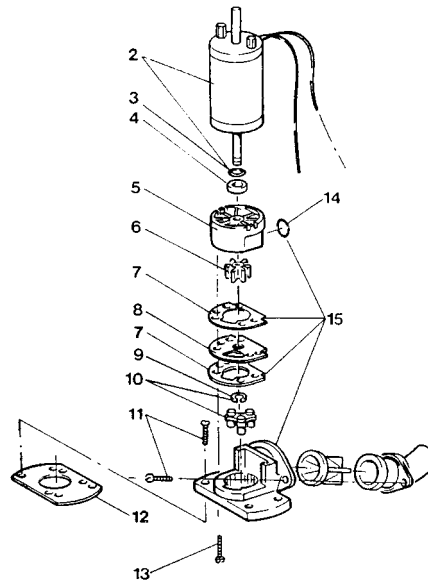


CAUTION: Do NOT apply any sealing compounds or lubricants

4. FITTING ADAPTED CONVERSION

You are now ready to convert your standard or large bowl manual toilet.

- Follow the installation instructions provided with your Jabsco Conversion.
- Note that your Adaptor Kit is supplied with its own matching black rubber base gasket with holes for 3 screws that should be used instead of the base gasket (key 12) supplied with the conversion which has holes for 4 screws.



Jabsco



ITT Industries

Jabsco, 20 Icon, Foothill Ranch, CA 92610-3000

Tel : +1 949 859 4945 Fax : +1 949 859 1153

Jabsco, Bingley Road, Hoddesdon, Hertfordshire, EN11 0BU

Tel : +44 (0) 1992 450 145 Fax : +44 (0) 1992 467 132

Fluid Products Canada, 55 Royal Road, Guelph, Ontario N1H 1T1

Tel : +1 519 821 1900 Fax : +1 519 821 5316

NHK Jabsco Co Ltd, 3-21-10, Shin - Yokohama, Kohoku-ku, Yokohama 222

Tel : +81 (0) 45 475 8906 Fax : +81 (0) 45 475 8908

Jabsco GmbH, Oststraße 28, 22844 Norderstedt

Tel : +49 (0) 40 53 53 73 0 Fax : +49 (0) 40 53 53 73 11

USA

UK

CANADA

JAPAN

GERMANY

Warranty: All products of the company are sold and all services of the company are offered subject to the company's warranty and terms and conditions of sale, copies of which will be furnished upon request.