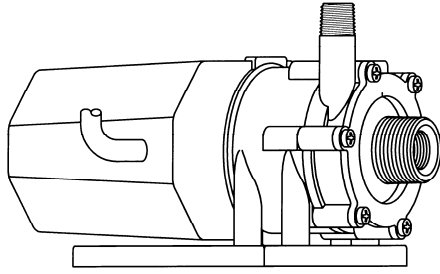




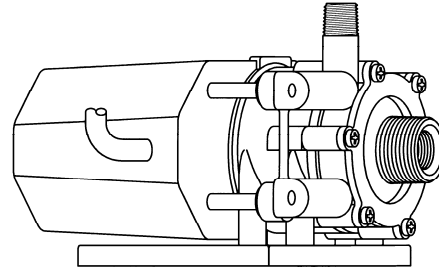
# MARCH PUMPS

1819 PICKWICK AVE., GLENVIEW, IL 60026-1306, U.S.A  
 PHONE: (847) 729-5300 - FAX: (847) 729-7062  
 WWW.MARCHPUMP.COM

## 2CP-MD LC-2CP-MD



2CP-MD SUBMERSIBLE ONLY



LC-2CP-MD SUBMERSIBLE OR OPEN AIR

### PUMP CONSTRUCTION & SERVICING:

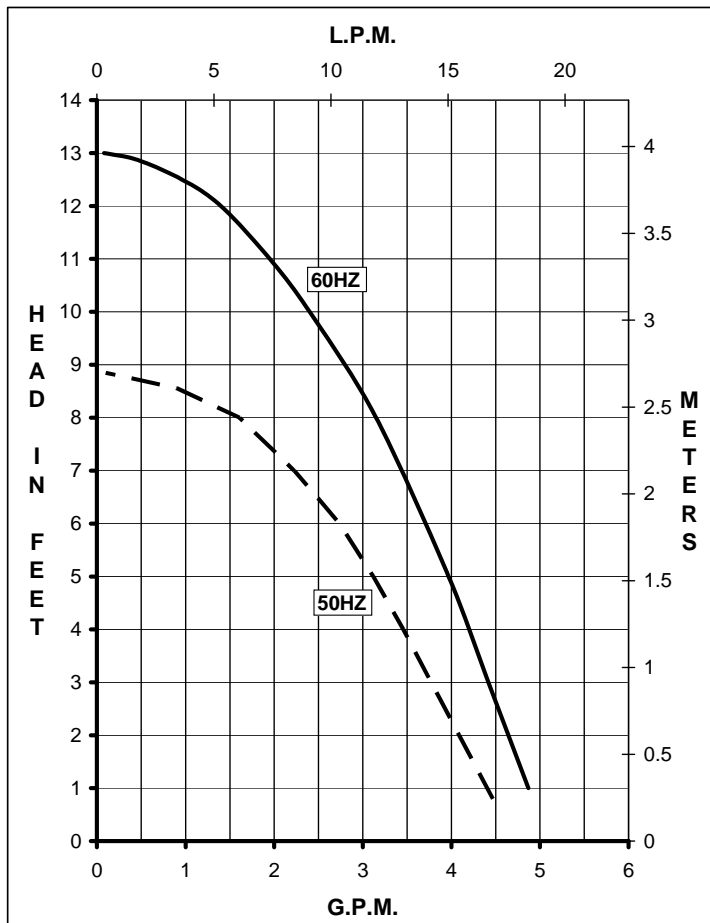
March "Orbital" Magnetic Drive Pumps eliminate the conventional shaft seals found in most pumps. Hence, there is no rotating seal to wear and allow the liquid being pumped to leak out. In addition to this unique "seal-less" design, the pump is hermetically encapsulated in epoxy. This epoxy encapsulation allows the pumps to be run fully submerged in many liquids. The model LC-2CP-MD pump can be run totally submerged or can be run in open air for complete moisture protection. The model 2CP-MD must be run submerged only. All these pumps can be serviced with the use of a screwdriver. The only moving part other than the motor is the Impeller Assembly. This Impeller Assembly rotates on a stationary shaft and up against a thrust washer. This is the only part that can wear out, and may need to be replaced. See the Repair Parts List for replacement parts if necessary.

### OPERATION:

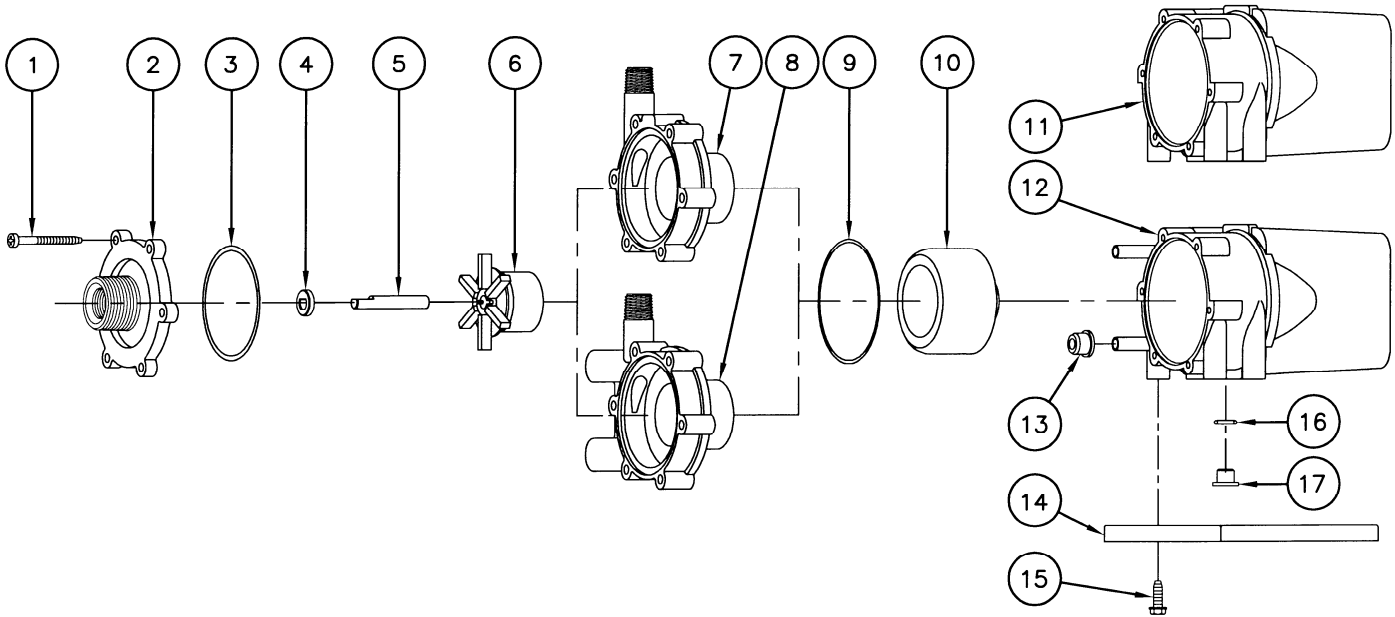
Pumps are not self priming and will not produce a suction lift and must be installed with a positive flooded suction. These pumps rely on the liquid being pumped to lubricate the Impeller Assembly spinning on the stationary shaft. If the pump is run dry for longer than 60 seconds, the plastic may "freeze" onto the shaft.

### ELECTRICAL:

Models are 115 Volt or 230 Volt, 50/60Hz, 1 phase A.C. All cord sets are U.L. LISTED 18/3 wire SJT plastic cords. Standard cord length is 6 feet. The motor-thermal overload combination is U.L. Yellow Card Recognized under File No. E39859. The motors are C.S.A. recognized under File No. 40072. The pumps are U.L. Recognized under File No. E80954. U.L. Recognition On Pumps Is For Water Only. For pumping liquids other than water, contact factory.



SPECIFICATIONS		2CP-MD		LC-2CP-MD	
Max Flow	50Hz	lpm	18.5	18.5	
	60Hz	gpm	5	5	
Max Head	50Hz	m	2.7	2.7	
	60Hz	ft (psi)	13 (5.6)	13 (5.6)	
Inlet			3/8" FPT & 3/4" MPT	3/8" FPT & 3/4" MPT	
Outlet			1/4" MPT	1/4" MPT	
Max Internal Pressure		psi	50	25	
		bar	3.4	1.7	
Max Liquid Temperature			°F	130	130
			°C	54	54
Packed Weight		kg/lbs	2.3/5	2.3/5	
Motor Type			TE/SUB	TE/SUB	
			115 or 230	115 or 230	
Phase			1	1	
50Hz	Volts		115	230	115 230
	Watts		58	59	58 59
	Amps		1.1	0.72	1.1 0.72
	Kw		0.021	0.021	0.021 0.021
	Rpm		2850	2850	2850 2850
60Hz	Volts		115	230	115 230
	Watts		54	57	54 57
	Amps		0.92	0.53	0.92 0.53
	Hp		1/35	1/35	1/35 1/35
	Rpm		3450	3450	3450 3450
Electrical Connection			Cord	Cord	
Overall Pump Dimensions (Inches)	Height		4.13	4.13	
	Width		4.87	4.87	
	Length		6.11	6.11	
Overall Pump Dimensions (cm)	Height		10.4	10.4	
	Width		12.3	12.3	
	Length		15.5	15.5	



### REPAIR PARTS LIST

ITEM	DESCRIPTION	MATERIAL	QTY	PART #	2CP-MD	LC-2CP-MD
1	Screw, Self Tapping	Stainless Steel	4	0115-0062-1000	S	S
2	Cover	Polypropylene	1	0125-0056-1000	S	S
3	"O" Ring (Cover) 3/32"CS x 2"ID x 2-3/16"OD	Viton	1	0125-0065-1000	S	S
4	Thrust Washer	Ceramic	1	0130-0028-1000	S	S
5	Shaft	Stainless Steel	1	0125-0125-1000	S	S
6	Impeller Assembly	Polypropylene/Ceramic Mag.	1	0125-0055-0100	S	S
7	Rear Housing	Polypropylene	1	0125-0058-1000	S	
8	Rear Housing & Plug Assembly	Polypropylene	1	0125-0057-0100		S
9	"O" Ring (Bracket) 1/16"CS x 2-1/4"ID x 2-3/8"OD	Viton	1	0125-0121-1000	S	S
10	Drive Magnet Assembly		1	0125-0083-0100	S	S
11A	Epoxy Motor, Bracket, Cord Assy 115V 50/60Hz		1	0125-0059-0100	S	
11B	Epoxy Motor, Bracket, Cord Assy 230V 50/60Hz		1	0125-0059-0300	S	
12A	L.C. Epoxy Motor, Bracket, Cord Assy 115V 50/60Hz		1	0125-0059-0200		S
12B	L.C. Epoxy Motor, Bracket, Cord Assy 230V 50/60Hz		1	0125-0059-0400		S
13	Cooling Tube Seal	Buna N	2	0125-0007-1000		S
14A	Mounting Base	Polypropylene	1	0125-0060-1000	S	S
14B	Marine Mounting Base w/Grommets (Not Shown)	Cycolac	1	0125-0113-0100	O	O
15	Base Screw	Stainless Steel	4	0125-0130-1000	S	S
16	"O" Ring	Viton	1	0210-0008-1000	S	S
17	Plug (for Motor Bracket)	Polypropylene	1	0125-0110-1000	S	S

NOTE: Contact Factory for other materials and/or parts not listed.

Legend: S = Standard, O = Optional

#### **MATERIALS IN CONTACT WITH SOLUTION:**

Polypropylene, Viton, Stainless Steel, Ceramic Magnet.

When pump is submerged the following additional materials are in contact: Epoxy, Buna N, and cord.

#### **NOTES:**

All specifications & data are based on pumping water and are intended for use as a guideline only. Ratings & dimensions may vary depending on the current motor being used.

#### **LIMITED WARRANTY:**

March pumps are guaranteed only against defects in workmanship or materials for a period of one year from date of manufacture pumping water. On all other solutions, contact the factory for application assistance. March Pump Application Worksheet 0750-0130-1000 is available for additional warranty information.