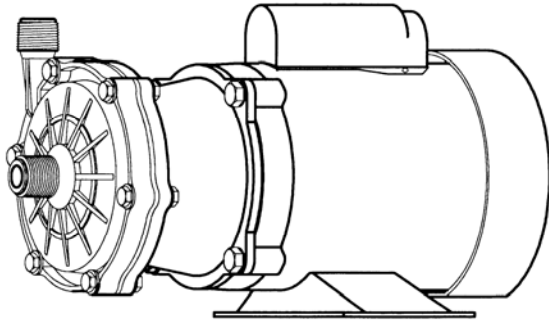




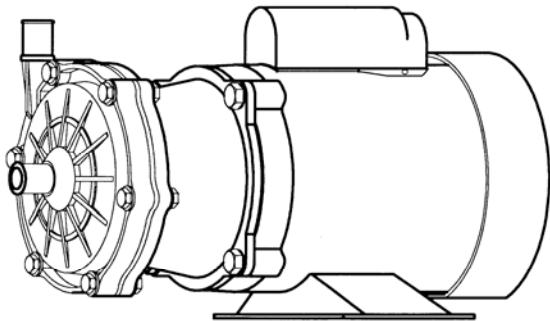
MARCH PUMPS

1819 PICKWICK AVE., GLENVIEW, IL 60026-1306, U.S.A
 PHONE: (847) 729-5300 - FAX: (847) 729-7062
 WWW.MARCHPUMP.COM

335-AP-MD 335-CP-MD



335-CP-MD



335-AP-MD

MODEL ABBREVIATIONS:

A = Smooth Inlet/Outlet, C = Threaded Inlet/Outlet
 MD = Magnetic Drive

PUMP CONSTRUCTION & SERVICING:

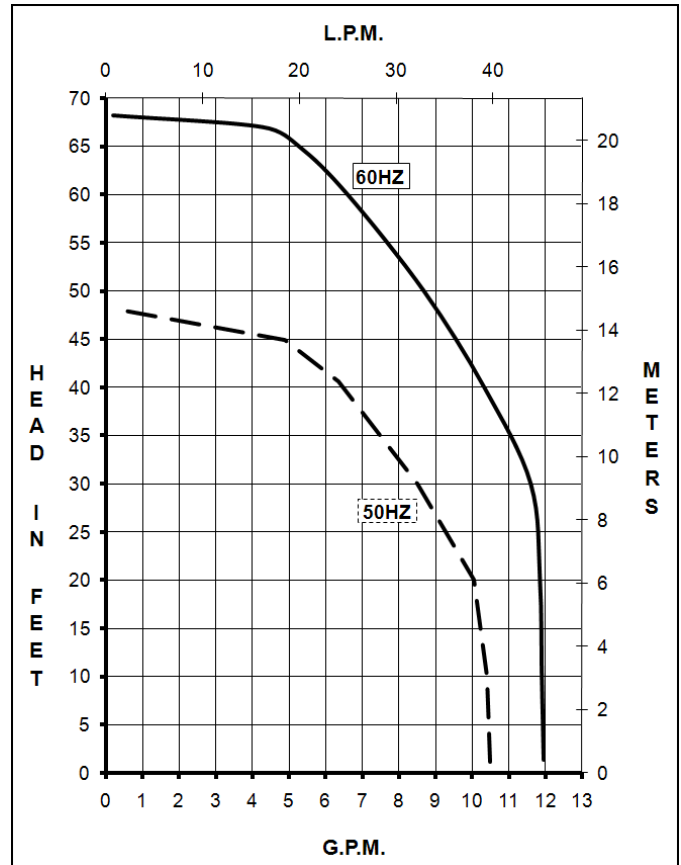
March "Orbital" Magnetic Drive Pumps eliminate the conventional shaft seals found in most pumps. Hence, there is no rotating shaft or seal to wear and allow the liquid being pumped to leak out. The only seal in the pump is a stationary "O" ring seal between the Front Housing and the Rear Housing. The pump can be serviced with the use of a wrench. The only moving part other than the motor, is the Impeller Assembly, which rotates on a stationary shaft and up against a thrust washer. These are the only parts that might wear, and may require replacement. See the Repair Parts List for replacement parts.

OPERATION:

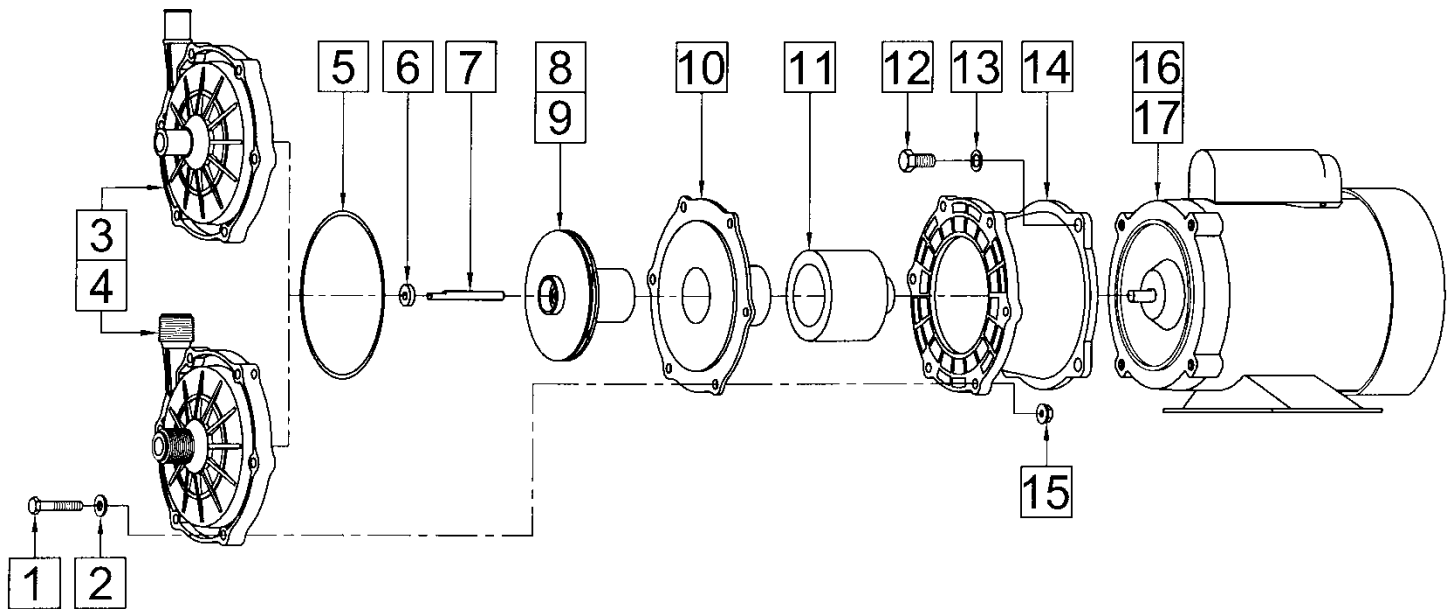
Pumps are not self priming and will not produce a suction lift and must be installed with a positive flooded suction. We rely on the liquid being pumped to lubricate the Impeller Assembly spinning on the stationary shaft. If the pump is run dry for longer than 30 seconds, the Impeller may "freeze" onto the shaft. A carbon bushing will enable dry running protection. The direction of motor rotation should be clockwise looking at the inlet of the pump. A trimmed impeller may be necessary when pumping a liquid with a specific gravity or viscosity greater than water as well in cases of high liquid temperature.

ELECTRICAL:

The standard pump has a TEFC motor, 115/230 Volts, 1 phase or 230/460 Volts, 3 phase rated as continuous duty. A junction box is located on the side of the motor for the electrical hook up. The wiring instructions are located on the motor label or on the junction box cover. Explosion proof and special voltage motors are available upon special order.



SPECIFICATIONS		335-AP-MD				335-CP-MD			
		TEFC 115/230		TEFC 230/460		TEFC 115/230		TEFC 230/460	
Max Flow	50Hz	lpm		37.8		37.8		37.8	
	60Hz	gpm		12		12		12	
Max Head	50Hz	m		14.6		14.6		14.6	
	60Hz	ft (psi)		68 (29.4)		68 (29.4)		68 (29.4)	
Inlet		3/4" OD Smooth				3/4" MPT			
Outlet		3/4" OD Smooth				3/4" MPT			
Max Internal Pressure	psi	50				50			
	bar	3.4				3.4			
Max Liquid Temperature	°F	190				190			
	°C	87				87			
Packed Weight	kg/lbs	9.5/21				9.5/21			
Motor Type		TEFC 115/230		TEFC 230/460		TEFC 115/230		TEFC 230/460	
Phase		1		3		1		3	
50Hz	Volts	115	230	190	380	115	230	190	380
	Watts	290	290	350	350	290	290	350	350
	Amps	4.4	2.2	1.2	0.6	4.4	2.2	1.2	0.6
	Kw	.248	.248	.186	.186	.248	.248	.186	.186
	Rpm	2850	2850	2850	2850	2850	2850	2850	2850
60Hz	Volts	115	230	230	460	115	230	230	460
	Watts	452	452	425	425	452	452	425	425
	Amps	4.4	2.2	1.2	0.6	4.4	2.2	1.2	0.6
	Hp	1/3	1/3	1/3	1/3	1/3	1/3	1/3	1/3
	Rpm	3450	3450	3450	3450	3450	3450	3450	3450
Electrical Connection		Conduit Box		Conduit Box		Conduit Box		Conduit Box	
Overall Pump Dimensions (Inches)	Height	7.79		7.44		7.79		7.44	
	Width	7.74		9.25		7.74		9.25	
	Length	13.67		14.49		13.67		14.49	
Overall Pump Dimensions (cm)	Height	19.7		18.8		19.7		18.8	
	Width	19.6		23.4		19.6		23.4	
	Length	34.7		36.8		34.7		36.8	



NOTE:
When attaching the Drive Magnet Assembly to the motor shaft, position the face of the Drive Magnet Assembly flush with the face of the Motor Bracket.

REPAIR PARTS LIST

ITEM	DESCRIPTION	MATERIAL	QTY	PART #	335-AP-MD	335-CP-MD
1	Screw 1/4-20 x 1-1/2" Lg.	Stainless	6	0153-0011-1000	S	S
2	Washer 1/4 I.D. x 5/8 O.D.	Stainless	6	0157-0023-1000	S	S
3	Front Housing (3/4" OD Inlet/Outlet)	Polypropylene	1	0335-0003-1000	S	O
4	Front Housing (3/4" MPT Inlet/Outlet)	Polypropylene	1	0335-0002-1000	O	S
5A	"O" Ring	Viton	1	0335-0009-1000	S	S
5B	"O" Ring	Viton/Teflon	1	0335-0016-1000	O	O
6	Thrust Washer	Ceramic	1	0821-0079-1000	S	S
7	Shaft	Ceramic	1	0130-0024-1000	S	S
8	Impeller Assembly	Polypropylene	1	0335-0005-0200	S	S
9	Impeller Assembly w/Carbon Bushing	Polypropylene/Carbon	1	0335-0005-0400	O	O
10	Rear Housing w/Thrust Washer	Polypropylene/Ceramic	1	0335-0004-0100	S	S
11	Drive Magnet Assembly		1	0151-0061-0200	S	S
12	Screw 3/8-16 x 1" Lg.	Stainless	4	0155-0017-1000	S	S
13	Washer 3/8 I.D. x 5/8 OD	Stainless	4	0155-0019-1000	S	S
14	Motor Connecting Bracket		1	0335-0010-1000	S	S
15	Hex Nut	Stainless	6	0156-0053-1000	S	S
16	Motor, TEFC, 115/230 Volt, 50/60Hz, 1 Phase		1	0151-0015-1000	S	S
17	Motor, TEFC, 230/460 Volt, 50/60Hz, 3 Phase (Not Shown)		1	0151-0039-1000	S	S

NOTE: Contact Factory for other materials and/or parts not listed.

Legend: S = Standard, O = Optional

MATERIALS IN CONTACT WITH SOLUTION:

Polypropylene, Viton, Ceramic

NOTES:

All specifications & data are based on pumping water and are intended for use as a guideline only. Ratings & dimensions may vary depending on the current motor being used.

LIMITED WARRANTY:

March pumps are guaranteed only against defects in workmanship or materials for a period of one year from date of manufacture pumping water. On all other solutions, contact the factory for application assistance. March Pump Application Worksheet 0750-0130-1000 is available for additional warranty information.