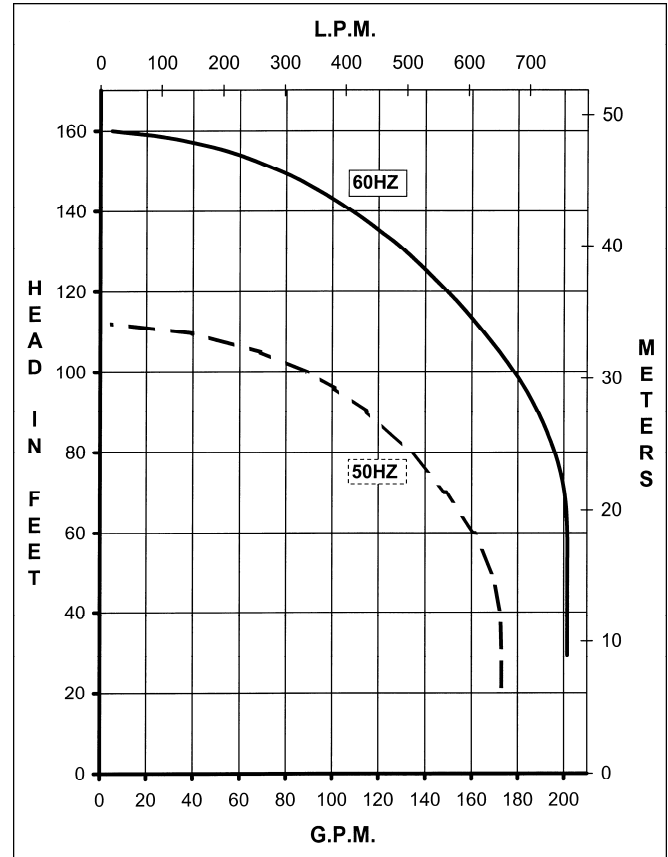
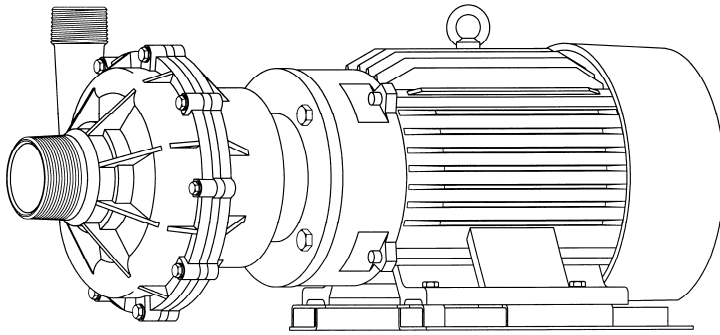




MARCH PUMPS

1819 PICKWICK AVE., GLENVIEW, IL 60026-1306, U.S.A
 PHONE: (847) 729-5300 - FAX: (847) 729-7062
 WWW.MARCHPUMP.COM

TE-10K-MD



MODEL ABBREVIATIONS:

TE = Totally Enclosed Fan Cooled Motor
 K = Kynar
 MD = Magnetic Drive

CONSTRUCTION & SERVICING:

March "Orbital" Magnetic Drive Pumps eliminate the conventional shaft seals found in most pumps. Hence, there is no rotating shaft or seal to wear and allow the liquid being pumped to leak out. The only seal in the pump is a stationary Gasket between the front and the rear Housings. The pump can be serviced with the use of an adjustable wrench. The only moving part other than the motor is the Impeller Assembly which rotates on a stationary shaft and up against a thrust washer. These are the only parts that might wear, and may require replacement. See the repair Parts List for replacement parts.

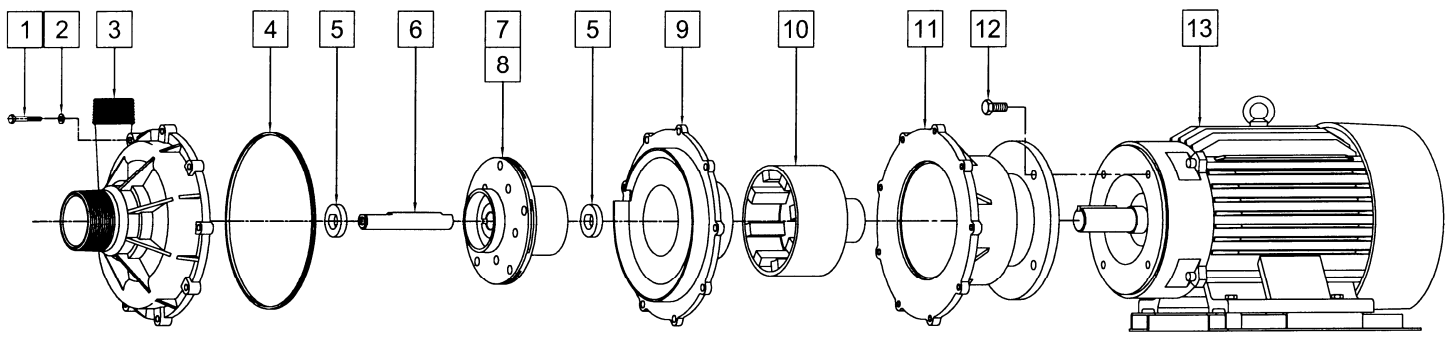
OPERATION:

Pumps are not self priming and will not produce a suction lift and must be installed with a positive flooded suction. We rely on the liquid being pumped to lubricate the Impeller Assembly bushing spinning on the stationary shaft. If the pump is run dry for longer than 60 seconds the Impeller bushing may "freeze" onto the shaft. The direction of motor rotation should be clockwise looking into the inlet of the pump. A trimmed impeller may be necessary when pumping a liquid with a specific gravity or viscosity greater than water as well in cases of high liquid temperature.

ELECTRICAL:

The standard pump motor is a TEFC, 3 phase, rated as continuous duty. A junction box is located on the side of the motor for making the electrical hook up. The wiring instructions are located on the motor label or on the junction box cover. The motor has U.L. yellow card recognition. Explosion proof and special voltage motors are available upon special order.

| SPECIFICATIONS | | | TE-10K-MD |
|----------------------------------|--------|----------|-------------|
| Max Flow | 50Hz | lpm | 654 |
| | 60Hz | gpm | 200 |
| Max Head | 50Hz | m | 34.1 |
| | 60Hz | ft (psi) | 160 (69.3) |
| Inlet | | 3" MPT | |
| Outlet | | 2" MPT | |
| Max Internal Pressure | psi | | 75 |
| | bar | | 5 |
| Max Liquid Temperature | °F | | 190 |
| | °C | | 87 |
| Packed Weight | kg/lbs | 118/260 | |
| Motor Type | | | TEFC |
| | | | 230/460 |
| Phase | | | 3 |
| 50Hz | Volts | | 380 |
| | Watts | | 5700 |
| | Amps | | 14.2 |
| | Kw | | 5.59 |
| | Rpm | | 2850 |
| 60Hz | Volts | | 230 460 |
| | Watts | | 9350 9350 |
| | Amps | | 22.8 11.4 |
| | Hp | | 10 10 |
| | Rpm | | 3450 3450 |
| Electrical Connection | | | Conduit Box |
| Overall Pump Dimensions (Inches) | Height | 13.32 | |
| | Width | 13.94 | |
| | Length | 30.74 | |
| Overall Pump Dimensions (cm) | Height | 33.8 | |
| | Width | 35.4 | |
| | Length | 78.0 | |



CAUTION IN ASSEMBLY/DISASSEMBLY:

The magnetic coupling in the pump is made of magnetized material and is strong enough to warrant caution. When disassembling the pump, remove the Impeller Assembly from the Rear Pump Housing. The attraction of the Impeller Magnet and the Drive Magnet may pull the Impeller from your grasp.

To assemble hold onto the outer diameter of the impeller vanes with both hands and slowly engage the Impeller into the magnetic field. As you feel the axial magnetic pull, hold the Impeller firmly and resist the pull of the magnets, but slowly allow the Impeller to be pulled into the magnetic field. The axial magnetic pull is greatest between 1/3 to 2/3 engagement. The axial pull will diminish as the two magnets become aligned. If you allow the Impeller Assembly to snap into the rear housing, you may damage the bushing, the rear thrust washer or the plastic. Care must be taken if you set the magnets down or near a steel surface due to the powerful magnetic pull. These individual magnets may affect the calibration or damage sensitive electronic instruments if set next to the instrument.

When attaching drive magnet to motor shaft, position the face of the drive magnet 3/16 inch above the face of the motor bracket.

| REPAIR PARTS LIST | | | | | |
|-------------------|---|----------------------|-----|----------------|-----------|
| ITEM | DESCRIPTION | MATERIAL | QTY | PART # | TE-10K-MD |
| 1 | Screw 5/16-18 x 1-3/4" Lg. | Stainless Steel | 9 | 0160-0029-1000 | S |
| 2 | Washer | Stainless Steel | 9 | 0160-0030-1000 | S |
| 3 | Front Housing | Kynar | 1 | 0161-0008-1000 | S |
| 4 | Gasket | Viton | 1 | 0161-0043-1000 | S |
| 5 | Thrust Washer (Front & Rear) | Ceramic | 2 | 0161-0001-1000 | S |
| 6 | Shaft | Ceramic | 1 | 0161-0002-1000 | S |
| 7 | Impeller Assembly w/Carbon Bushing | Kynar/Carbon | 1 | 0161-0005-0400 | S |
| 8 | Impeller Assembly w/Mica Teflon Bushing | Kynar/Teflon | 1 | 0161-0005-0600 | O |
| 9 | Rear Housing | Kynar | 1 | 0161-0009-1000 | S |
| 10 | Drive Magnet Assembly | | 1 | 0161-0031-0100 | S |
| 11 | Motor Connecting Bracket | | 1 | 0161-0007-0000 | S |
| 12 | Screw 1/2-13 x 1" Lg. | Stainless Steel | 4 | 0160-0031-1000 | S |
| 13 | Motor, TEFC, 10HP, 3Phase | | 1 | 0161-0012-1000 | S |
| W | Wet End Kit (Items: 1-7 & 9) | See Individual Items | 1 | 0161-0035-0100 | S |

NOTE: Contact Factory for other materials and/or parts not listed. Legend: S = Standard, O = Optional

MATERIALS IN CONTACT WITH SOLUTION:

Carbon filled Kynar® (PVDF), Ceramic, Viton, and Carbon.

NOTES:

All specifications & data are based on pumping water and are intended for use as a guideline only. Ratings & dimensions may vary depending on the current motor being used.

LIMITED WARRANTY:

March pumps are guaranteed only against defects in workmanship or materials for a period of one year from date of manufacture pumping water. On all other solutions, contact the factory for application assistance. March Pump Application Worksheet 0750-0130-1000 is available for additional warranty information.