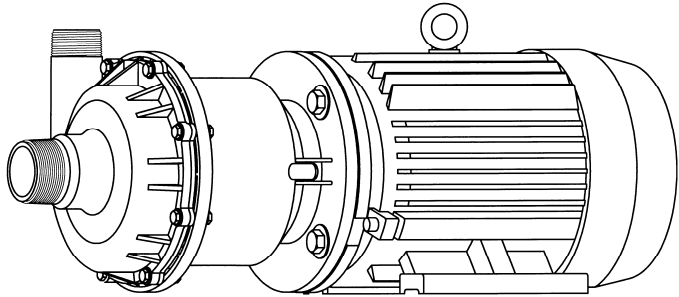




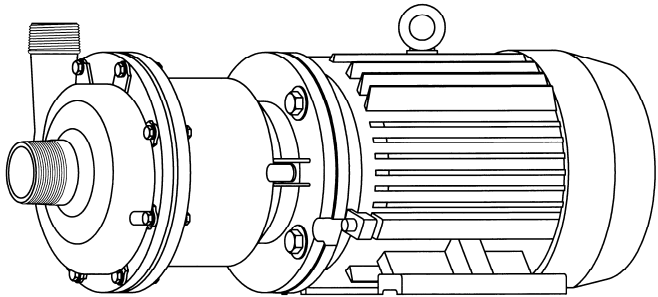
MARCH PUMPS

1819 PICKWICK AVE., GLENVIEW, IL 60026-1306, U.S.A
 PHONE: (847) 729-5300 - FAX: (847) 729-7062
 WWW.MARCHPUMP.COM

TE-8C-MD TE-8K-MD TE-8S-MD



TE-8C-MD & TE-8K-MD



TE-8S-MD

MODEL ABBREVIATIONS:

C = Polypropylene, K = Kynar, S = Stainless Steel
 TE = Totally Enclosed Fan Cooled Motor, MD = Magnetic Drive

CONSTRUCTION & SERVICING:

March "Orbital" Magnetic Drive Pumps eliminate the conventional shaft seals found in most pumps. Hence, there is no rotating shaft or seal to wear and allow the liquid being pumped to leak out. The only seal in the pump is a stationary "O" ring seal between the front and the rear Housings. The pump can be serviced with an adjustable wrench. The only moving part other than the motor is the Impeller Assembly, which rotates on a stationary shaft and up against a thrust washer. These are the only parts that might wear, and require replacement. See the Repair Parts List for replacement parts. Do not over tighten the 8 Housing Screws or you may crush the plastic Housing bosses. Tighten all screws uniformly.

OPERATION:

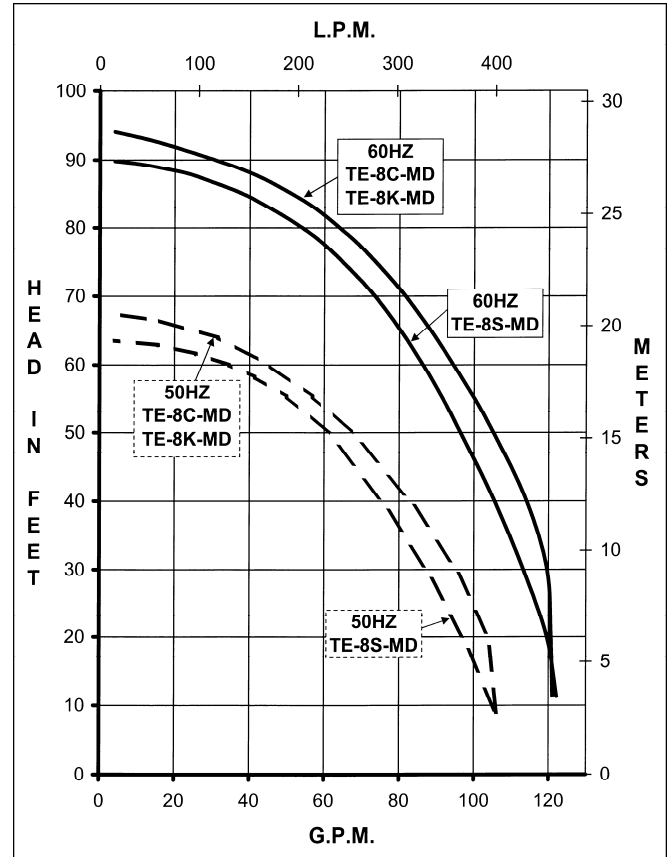
Pumps are not self priming and will not produce a suction lift and must be installed with a positive flooded suction. We rely on the liquid being pumped to lubricate the Impeller Assembly bushing spinning on the stationary shaft. If the pump is run dry for longer than 60 seconds, the Impeller bushing may "freeze" onto the shaft. The direction of motor rotation should be clockwise looking into the inlet of the pump. A trimmed impeller may be necessary when pumping a liquid with a specific gravity or viscosity greater than water as well in cases of high liquid temperature.

ELECTRICAL:

The standard pump motor is a TEFC, 3 phase, rated as continuous duty. A junction box is located on the side of the motor for making the electrical hook up. The wiring instructions are located on the motor label or on the junction box cover. The motor has U.L. yellow card recognition. Explosion proof and special voltage motors are available upon special order.

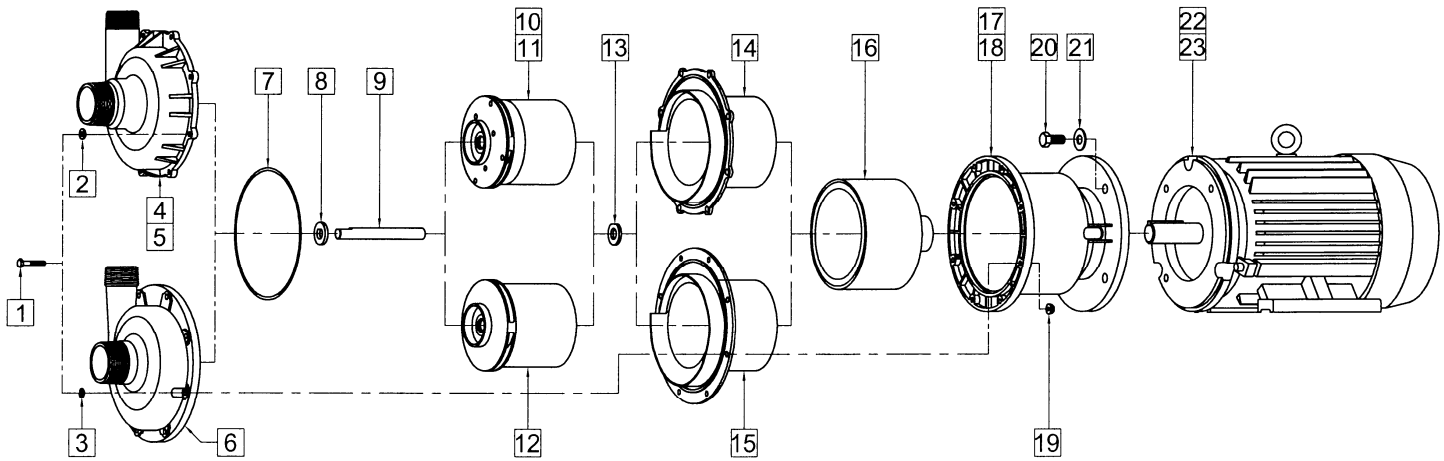
NOTES:

All specifications & data are based on pumping water and are intended for use as a guideline only. Ratings & dimensions may vary depending on the current motor being used.



SPECIFICATIONS			TE-8C-MD		TE-8K-MD		TE-8S-MD			
Max Flow	50Hz	lpm	400		400		400			
	60Hz	gpm	120		120		120			
Max Head	50Hz	m	20		20		19.3			
	60Hz	ft (psi)	95 (41.1)		95 (41.1)		90 (39)			
Inlet			2" MPT		2" MPT		2" MPT			
Outlet			1-1/2" MPT		1-1/2" MPT		1-1/2" MPT			
Max Internal Pressure	psi		50		75		200			
	bar		3.4		5		13			
Max Liquid Temperature	°F		190		200		250			
	°C		87		93		121			
Packed Weight			kg/lbs		72.5/160		72.5/160		81.5/180	
Motor Type			TEFC		TEFC		TEFC			
			230/460		230/460		230/460			
Phase			3		3		3			
50Hz	Volts		190	380	190	380	190	380		
	Watts		1895	1895	1895	1895	3310	3310		
	Amps		9.2	4.6	9.2	4.6	15	7.5		
	Kw		2.2	2.2	2.2	2.2	3.7	3.7		
	Rpm		2850	2850	2850	2850	2850	2850		
60Hz	Volts		230	460	230	460	230	460		
	Watts		2983	2983	2983	2983	5030	5030		
	Amps		7.8	3.9	7.8	3.9	12.6	6.3		
	Hp		3	3	3	3	5	5		
	Rpm		3450	3450	3450	3450	3450	3450		
Electrical Connection			Conduit Box		Conduit Box		Conduit Box			
Overall Pump Dimensions (Inches)	Height		10.86		10.86		10.86			
	Width		12.73		12.73		12.73			
	Length		24.68		24.68		24.68			
Overall Pump Dimensions (cm)	Height		27.5		27.5		27.5			
	Width		32.3		32.3		32.3			
	Length		62.6		62.6		62.6			

NOTE: When replacing impeller bushings in the field, the plastic bushings must be bored to size after they have been pressed into the impeller. Bore to .630/.632 I.D. The carbon and ceramic bushings are to finished size and do not require boring. When attaching drive magnet to the motor shaft, position the face of the drive magnet 3/8 inch below the face of the motor bracket.



REPAIR PARTS LIST

ITEM	DESCRIPTION	MATERIAL	QTY	PART #	TE-8C-MD	TE-8K-MD	TE-8S-MD
1A	Screw 1/4-20 x 1-1/2"Lg.	Stainless Steel	8	0153-0011-1000	S	S	S
1B	Screw 1/4-20 x 1-1/4"Lg. (Used with Metal Motor Bracket)	Stainless Steel	8	0157-0036-1000	O	O	O
2	Washer 1/4 I.D. x 5/8 O.D.	Stainless Steel	8	0157-0023-1000	S	S	
3	Lock Washer (Split) 1/4"	Stainless Steel	8	0157-0037-1000			S
4	Pump Housing	Polypropylene	1	0157-0007-1000	S		
5	Pump Housing	Kynar	1	0157-0052-1000		S	
6	Pump Housing	316 Stainless Steel	1	0157-0030-0000			S
7A	"O" Ring	Viton	1	0157-0011-1000	S	S	S
7B	"O" Ring	Viton/Teflon		0157-0032-1000	O	O	O
8	Thrust Washer (Front)	Ceramic	1	0157-0001-1000	S	S	S
9	Shaft	Ceramic	1	0157-0002-1000	S	S	S
10A	Impeller Assembly w/Ryton Bushing	Polypropylene/Ryton	1	0157-0004-0200	S		
10B	Impeller Assembly w/Carbon Bushing	Polypropylene/Carbon	1	0157-0004-0500	O		
10C	Impeller Assembly w/Mica Teflon Bushing	Polypropylene/Teflon	1	0157-0004-0700	O		
11A	Impeller Assembly w/Carbon Bushing	Kynar/Carbon	1	0157-0050-0500		S	
11B	Impeller Assembly w/Ryton Bushing	Kynar/Ryton	1	0157-0050-0200		O	
11C	Impeller Assembly w/Mica Teflon Bushing	Kynar/Teflon	1	0157-0050-0700		O	
12A	Impeller Assembly w/Carbon Bushing	316 Stainless/Carbon	1	0157-0029-0500			S
12B	Impeller Assembly w/Ryton Bushing	316 Stainless/Ryton	1	0157-0029-0200			O
12C	Impeller Assembly w/Mica Teflon Bushing	316 Stainless/Teflon	1	0157-0029-0700			O
13	Thrust Washer (Rear)	Ceramic	1	0157-0009-1000	S	S	S
14A	Rear Housing	Kynar	1	0157-0053-1000	S	S	
14B	Rear Housing	Ryton	1	0157-0038-000	O		
15	Rear Housing	316 Stainless Steel	1	0157-0028-0000			S
16	Drive Magnet Assembly		1	0157-0005-0100	S	S	S
17	Motor Connecting Bracket	Plastic	1	0157-0100-1000	S	S	S
18	Motor Connecting Bracket	Metal	1	0157-0008-0000	O	O	O
19	Lock Nut 1/4-20 (Serrated)	Stainless	8	0156-0053-1000	S	S	S
20	Screw 1/2-13 x 1"Lg.	Stainless	4	0160-0031-1000	S	S	S
21	Washer 1/2 I.D. x 1-1/4 O.D.	Stainless	4	0160-0032-1000	S	S	S
22	Motor, TEFC, 3HP, 230/460Volt, 50/60Hz, 3Phase		1	0157-0012-1000	S	S	
23	Motor, TEFC, 5HP, 230/460Volt, 50/60Hz, 3Phase		1	0157-0065-1000	O	O	S
W1	Wet End Kit (Items: 1A, 2, 4, 7A, 8, 9, 10A, 13, 14A, 19)	See Individual Items	1	0157-0085-0100	S		
W2	Wet End Kit (Items: 1A, 2, 5, 7A, 8, 9, 11A, 13, 14A, 19)	See Individual Items	1	0157-0086-0100		S	

NOTE: Contact Factory for other materials and/or parts not listed.

Legend: S = Standard, O = Optional

MATERIALS IN CONTACT WITH SOLUTION:

TE-8C-MD: Polypropylene, Kynar/Carbon Filled, Viton, Teflon/Ryton/Carbon, Ceramic
 TE-8K-MD: Kynar/Carbon Filled, Viton, Carbon, Ceramic
 TE-8S-MD: 316 Stainless Steel, Viton, Carbon, Ceramic

LIMITED WARRANTY:

March pumps are guaranteed only against defects in workmanship or materials for a period of one year from date of manufacture pumping water. On all other solutions, contact the factory for application assistance. March Pump Application Worksheet 0750-0130-1000 is available for additional warranty information.