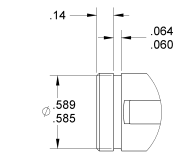
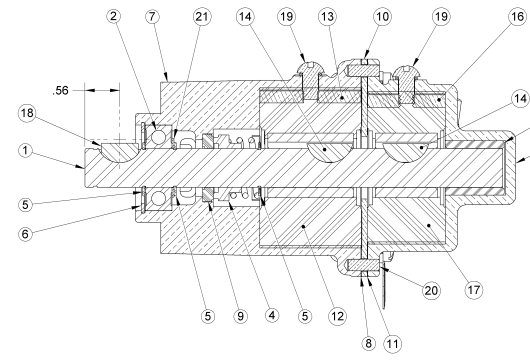
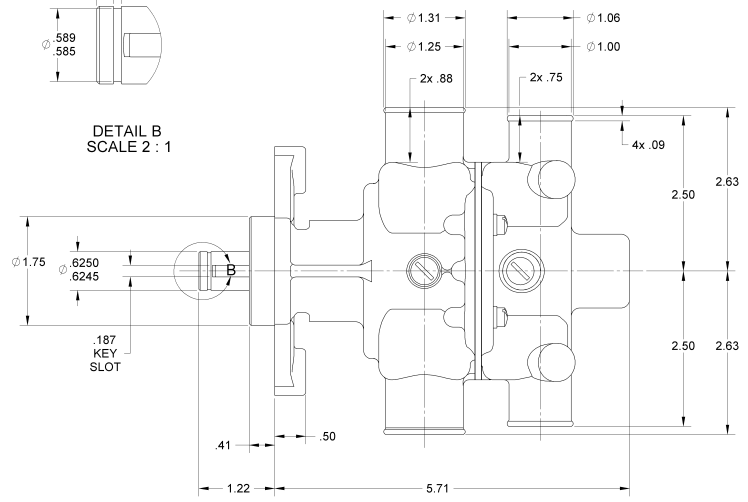


ITEM NO.	PART NUMBER	DESCRIPTION	QTY.
1	11460	SHAFT	1
2	04257	BALL BEARING	1
3	10611C	IMPELLER PUMP COVER	1
4	18743	MECH SEAL - TYPE 21	1
5	04258	EXT. RETAINING RING	3
6	04259	INT. RETAINING RING	1
7	11455	IMPELLER PUMP BODY	1
8	10612	GASKET - VELLUMOID	1
9	10926	SEAL SEAT	1
10	10625	SPACER PLATE	1
11	10609	GASKET - VELLUMOID	1
12	10515	RUBBER IMPELLER	1
13	10944	CAM	1
14	04432	WOODRUFF KEY	2
15	06333	BUSHING - GRAPHITE	1
16	15083	CAM	1
17	09959	RUBBER IMPELLER	1
18	11515	#9 WOODRUFF KEY	1
19	10515C	CAM SCREW ASSY	2
20	00413	DOWEL PIN	2
21	11456	SHOULDER WASHER	1
22	00343	LOCK WASHER	6
23	05771	10-24 X 5/8 MCH SCR	6
24	13285	TAG	1
25	23083	LABEL	1

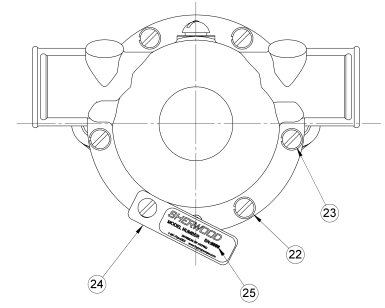
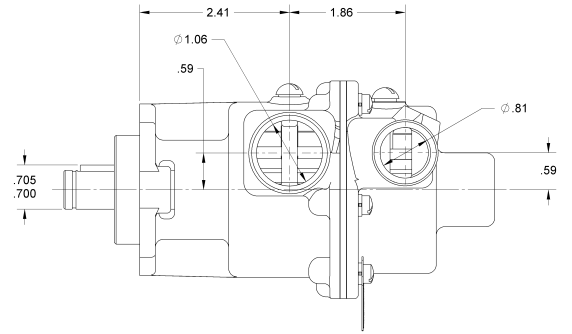
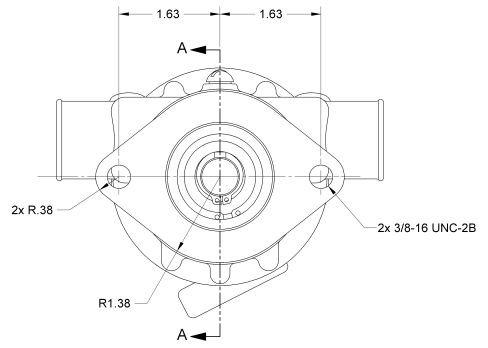


DETAIL B
SCALE 2 : 1



SECTION A-A

- NOTES:
1. APPLY BEAD OF PERMATEX AROUND THREADED HOLES IN CAMS, (ITEMS 13 & 16).
 2. USE PAC-EASE OR EQUIV WHEN INSTALLING WATER SEAL, (ITEM 4).
 3. USE COOLANT TO AID IN INSTALLATION OF RUBBER IMPELLERS, (ITEMS 12, & 17).
 4. PRESSURE TEST TO 20 - 30 PSI.
 5. PRINT D55, AND DATE CODE ON LABEL, (ITEM 25).



SHERWOOD
A Div. of Hypro Corporation A PENAIR COMPANY
375 Fifth Avenue N.W., New Brighton, MN 55112, (651) 766-6300

DWG BY: BP DATE: 6/16/1968
CHECKED BY: AVB DATE: 6/20/1968
APPROVED BY: DATE:

DRAWING BASED ON ASME Y14.5M-1994 DO NOT SCALE PRINT

THIRD ANGLE PROJECTION SCALE: 1:1 SHEET NUMBER: 1 OF 1

THIS DRAWING IS THE PROPERTY OF HYPRO AND WITHOUT WRITTEN AUTHORIZATION, MUST NOT BE COPIED OR COMMUNICATED.

REPLACES PART NO. REV.

PART DESCRIPTION: IMPELLER PUMP ASSY PART NUMBER: D55

K	61RS	ADD NOTES AND REDRAWN	PR	4/17/2007
REV.	ECN.	DESCRIPTION	APPROVED	DATE