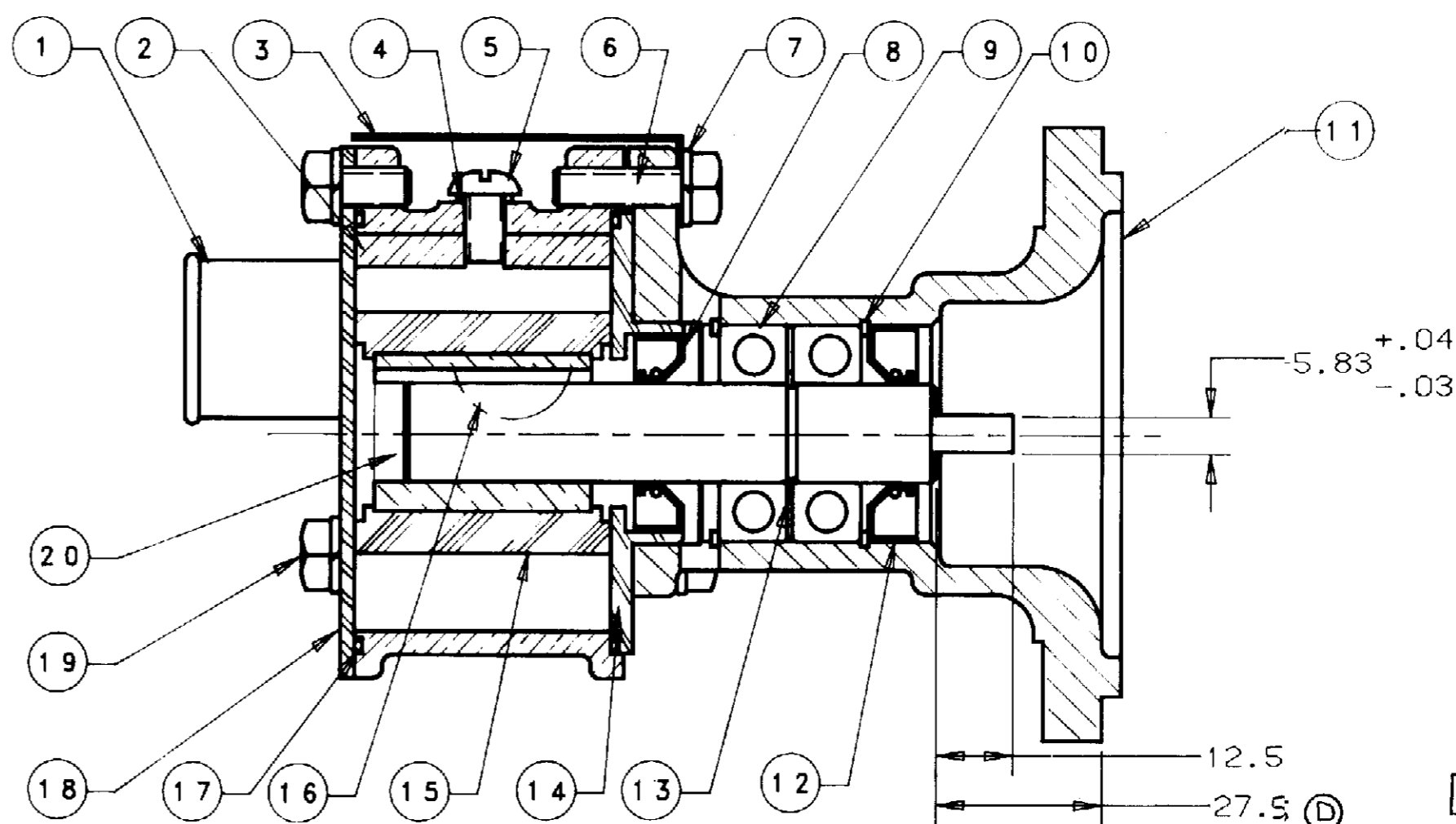
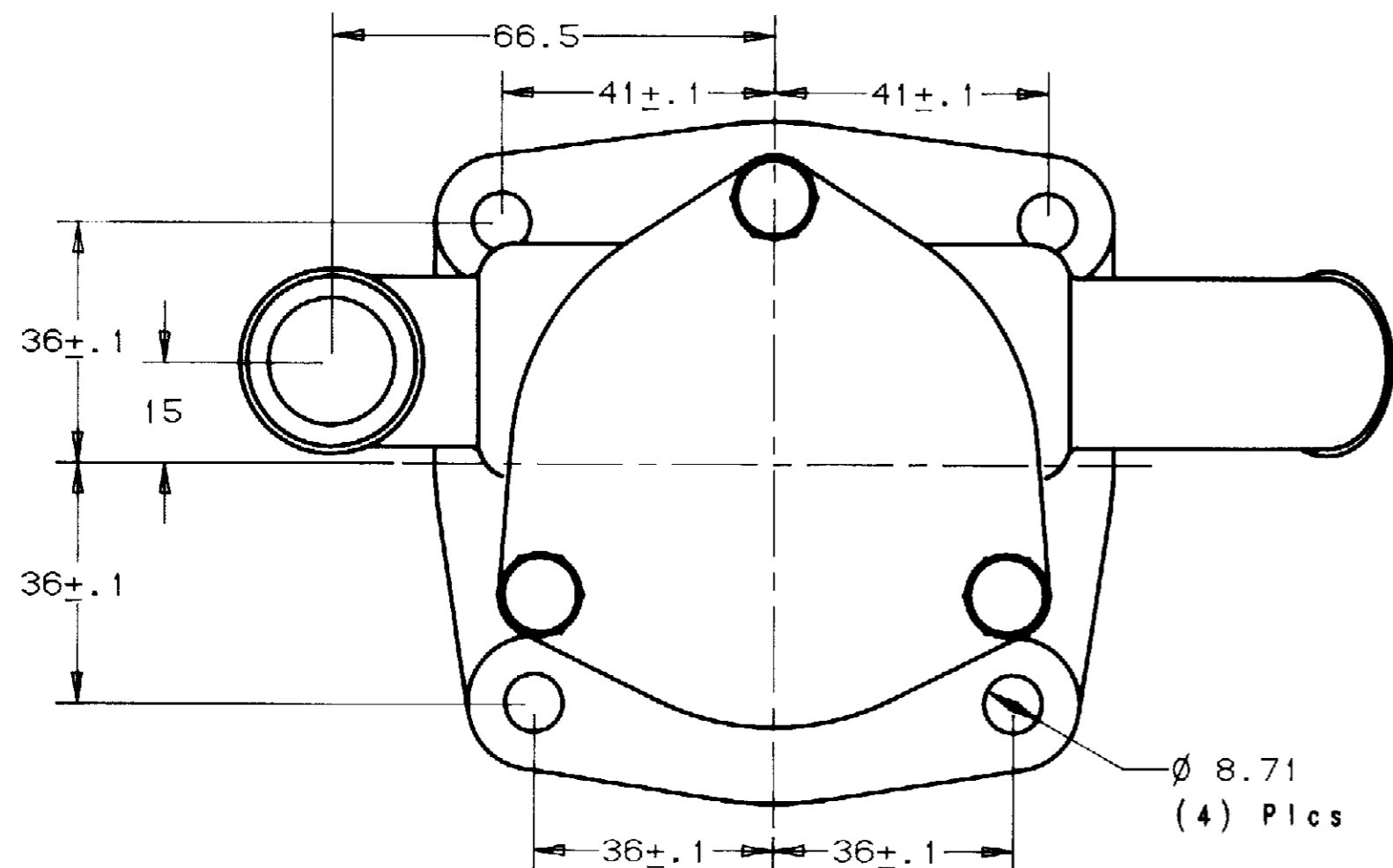
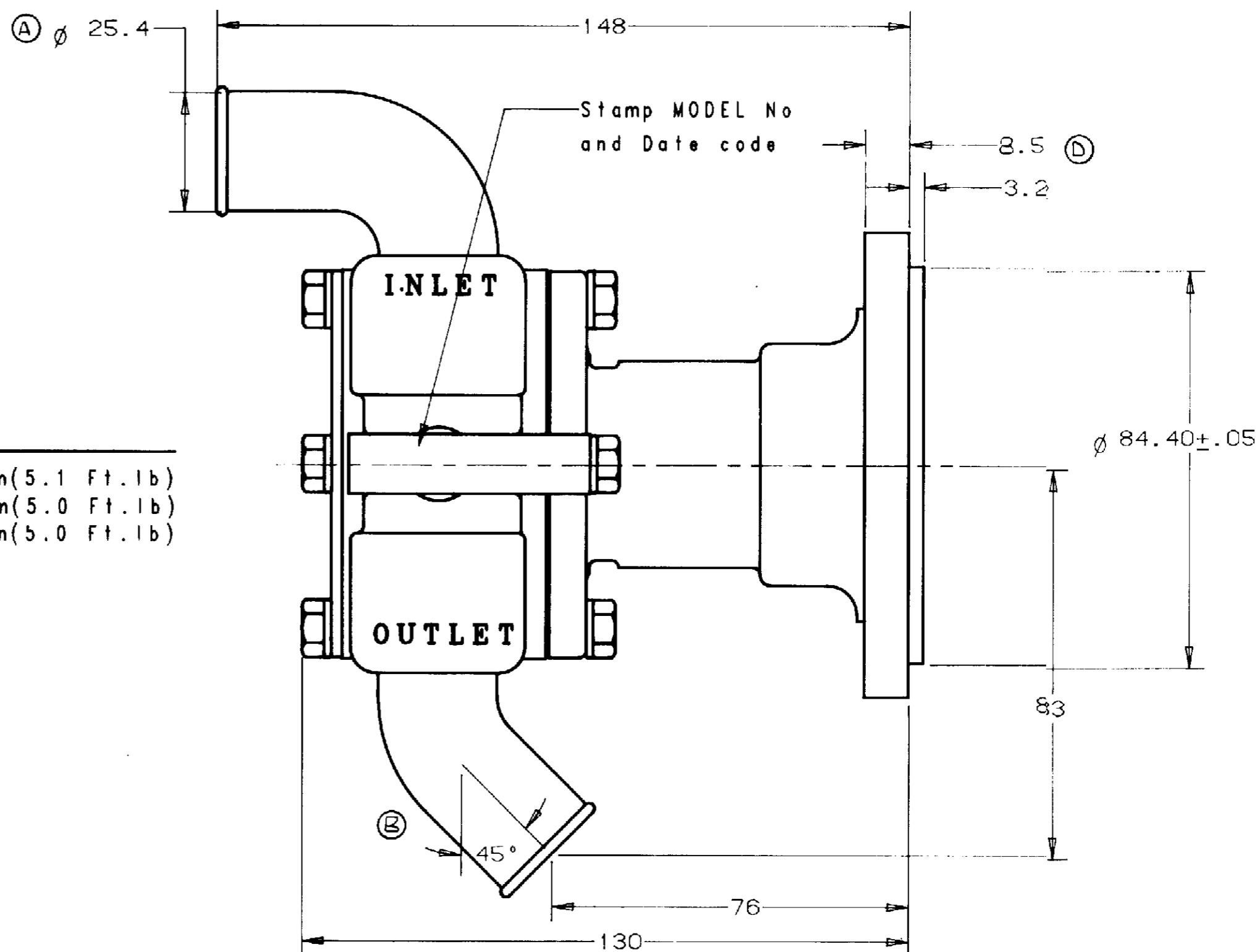


**PARTS LIST**

ITEM	PART No.	DESCRIPTION	QTY
01	21150	HOUSING	1
02	10929	CAM	1
03	13285	TAG	1
04	19996	SEAL WASHER	1
05	19995	CAM SCREW	1
06	12857	HEX HD. BOLT 1/4-20x7/8	3
07	12710	LOCKWASHER - 1/4	6
08	21209	LIP SEAL	1
09	12211	BEARING	2
10	4259	INT. RET. RING	2
11	21122	BODY	1
12	21208	LIP SEAL	1
13	4258	EXT. RET. RING	1
14	21163	WEAR PLATE	1
15	10615	IMPELLER (NO LUB. SLOTS)	1
16	4432	KEY	1
17	12231	O-RING	2
18	21173	COVER	1
19	19297	HEX HD. BOLT 1/4-20x1/2	3
20	21207	SHAFT	1
21			
22			
23	17653	BAG	1
24	17659	CARTON	1
25	12209	LABEL	1
26			
27	21182	MINOR SERVICE KIT	SERV.
28	21184	MAJOR SERVICE KIT	SERV.

**TORQUE VALUES**

DET.No 5	6.9 N.m (5.1 Ft. lb)
Det.No 6	6.8 N.m (5.0 Ft. lb)
DET.No 19	6.8 N.m (5.0 Ft. lb)



**Notes:**

- Details No 6 are to be tightened in an even manner, resulting in a consistent gap between Detail No 12 and Detail No 1.
- USE IMPELLER WITH NO LUBRICATION SLOTS ONLY.

REV.	DESCRIPTION	APPR	DATE
F	ADDED NOTE	TLG	3-29-98
E	WAS # 5133	KRS	6-2-98
D	WAS 9.5/27.0	KRS	5-7-98
C	FINALIZED DIMENSIONS	KRS	5-7-98
B	REVISED OUTLET PORT to 45°	KRS	5-7-98
A	WAS $\phi$ 31 PORT	GM	2-25-98

UNLESS OTHERWISE SPECIFIED  
 CAST DIMENSIONS  $\pm$  .02  
 FILLETS & RADII .08  
 FINISH STOCK .07  
 MACHINING TOLERANCE, INCHES  
 XX  $\pm$  .01 XXX  $\pm$  .005  
 SURFACE ROUGHNESS  
 ANGLES  $\pm$  0° 30'  
 CORNER BREAKS .01 MAX.

FLATNESS .0015 IN/IN  
 SQUARENESS .0015  
 CONCENTRICITY .002  
 ROUNDNESS .0005  
 RUNOUT .002

**SHERWOOD**  
 A DIVISION OF HYPRO CORPORATION  
 6331 E. JEFFERSON AVE. • DETROIT, MICHIGAN 48207

DRAFTSMAN	DATE	CHECKER	DATE	ASSY NO.
GM	12-29-92	BAM	1-4-93	

TITLE: RUBBER IMPELLER PUMP ASSEMBLY

MATERIAL: SEE DETAILS DWG NO: G1004

PROJ. NO. 1069