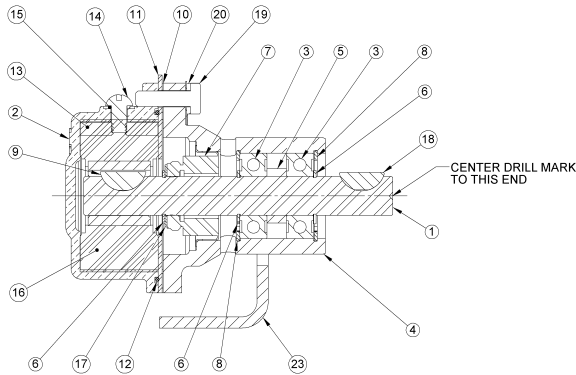


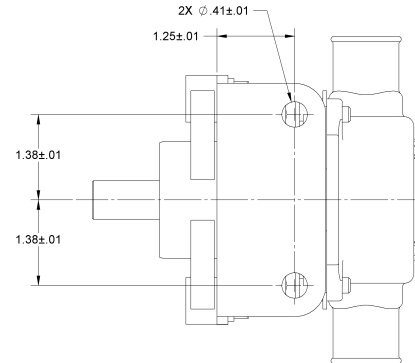
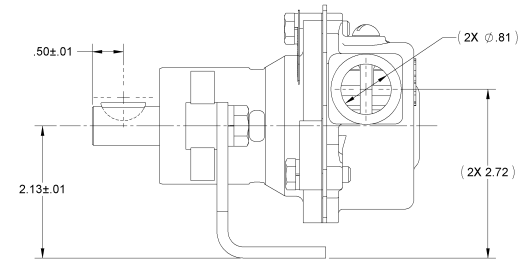
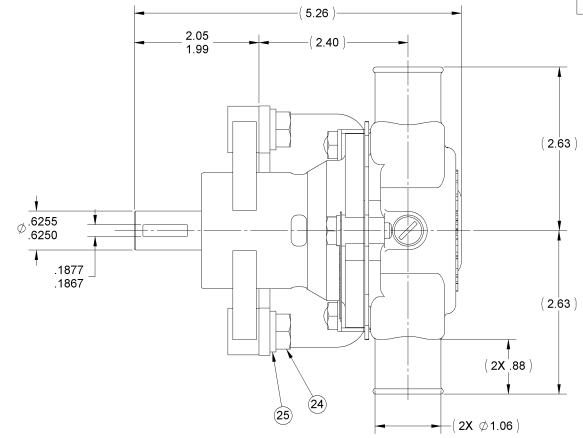
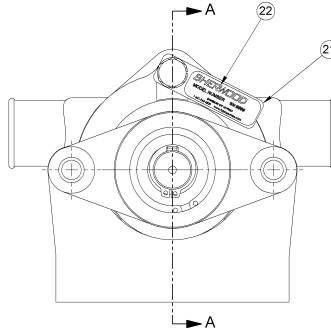
ITEM NO.	PART NUMBER	DESCRIPTION	QTY.
1	11877	SHAFT	1
2	12303	HOUSING	1
3	12211	BALL BEARING	2
4	12227	BODY	1
5	05133	SPACER	1
6	04258	EXT. RETAINING RING	3
7	12314	TYPE 6A SEAL/SEAT ASSY	1
8	04259	INT. RETAINING RING	2
9	04432	WOODRUFF KEY	1
10	12355	GASKET	1
11	12856	WEAR PLATE	1
12	12231	O-RING	1
13	15883	CAM	1
14	19995	SCREW 1/4-20 ROUND HD	1
15	19996	CAM WASHER	1
16	09959	RUBBER IMPELLER	1
17	04264	FLAT WASHER	1
18	12622	KEY	1
19	12367	1/4-20 HHCS	3
20	12710	LOCKWASHER	3
21	13285	TAG	1
22	23083	LABEL	1
23	12393	MOUNTING BRACKET	1
24	11833	HHCS 3/8-16 UNC	2
25	04991	LOCKWASHER - 3/8	2

ASSEMBLY NOTES:

1. APPLY BEAD OF PERMATEX AROUND THREADED HOLE IN CAM, ITEM 13.
2. USE WATER ONLY WHEN INSTALLING TYPE 6A SEAL/SEAT ASSY, ITEM 7.
3. USE COOLANT TO AID IN INSTALLATION OF RUBBER IMPELLER, ITEM 16.
4. TORQUE 1/4-20 HHCS TO 5 - 8 FT/LBS. ITEM 19.
5. PRESSURE TEST PUMP AT 20 - 30 PSI.
6. PRINT ON LABEL, ITEM 22
G1
DATE CODE.



SECTION A-A



PART NUMBER

G1

REV	DESCRIPTION	CHKD	DATE	REV	DESCRIPTION	CHKD	DATE	REV	DESCRIPTION	CHKD	DATE
F	4637	REMOVE 1256 SEAL ASSY & 10130C CAM/SCREW ASSY ADD: 1256 SEAL ASSY & 10130C CAM/SCREW ASSY NOTE: 2. MAX. USE FRC-BASE OR EQUIV. FRC-BASE	FEB 18/01/2003								
E	4401	CHANGE BEARING TO 12211. WAS 2348	FEB 18/01/2003								
D	E1919	UPDATED BOM	DIV 01/02/2002								
C	-	ISSUE WAS 1222	SPR 7/26/1993								
B	-	RE-DRAWN WITHOUT CHANGE	KB 10/26/1986								
A	-	REVISION DESCRIPTION									

SHERWOOD
A Div. of Hypro Corporation A PENTAIR COMPANY

375 Fifth Avenue NW, New Brighton, MI 48112 (616) 766-6300

DRAWING BASED ON ASME Y14.9M-1994 DO NOT SCALE PRINT

SCALE: 1:1 SHEET NUMBER 1 OF 1

THIRD ANGLE PROJECTION

PART DESCRIPTION: IMPELLER PUMP ASSY

REPLACES PART NO. G1

APPROVED BY: RBM DATE: 11/15/1979

CHECKED BY: RBM DATE: 11/15/1979

DATE: 11/15/1979

THIS DRAWING IS THE PROPERTY OF HYPRO, AND WITHOUT WRITTEN AUTHORIZATION, MUST NOT BE COPIED OR COMMUNICATED.