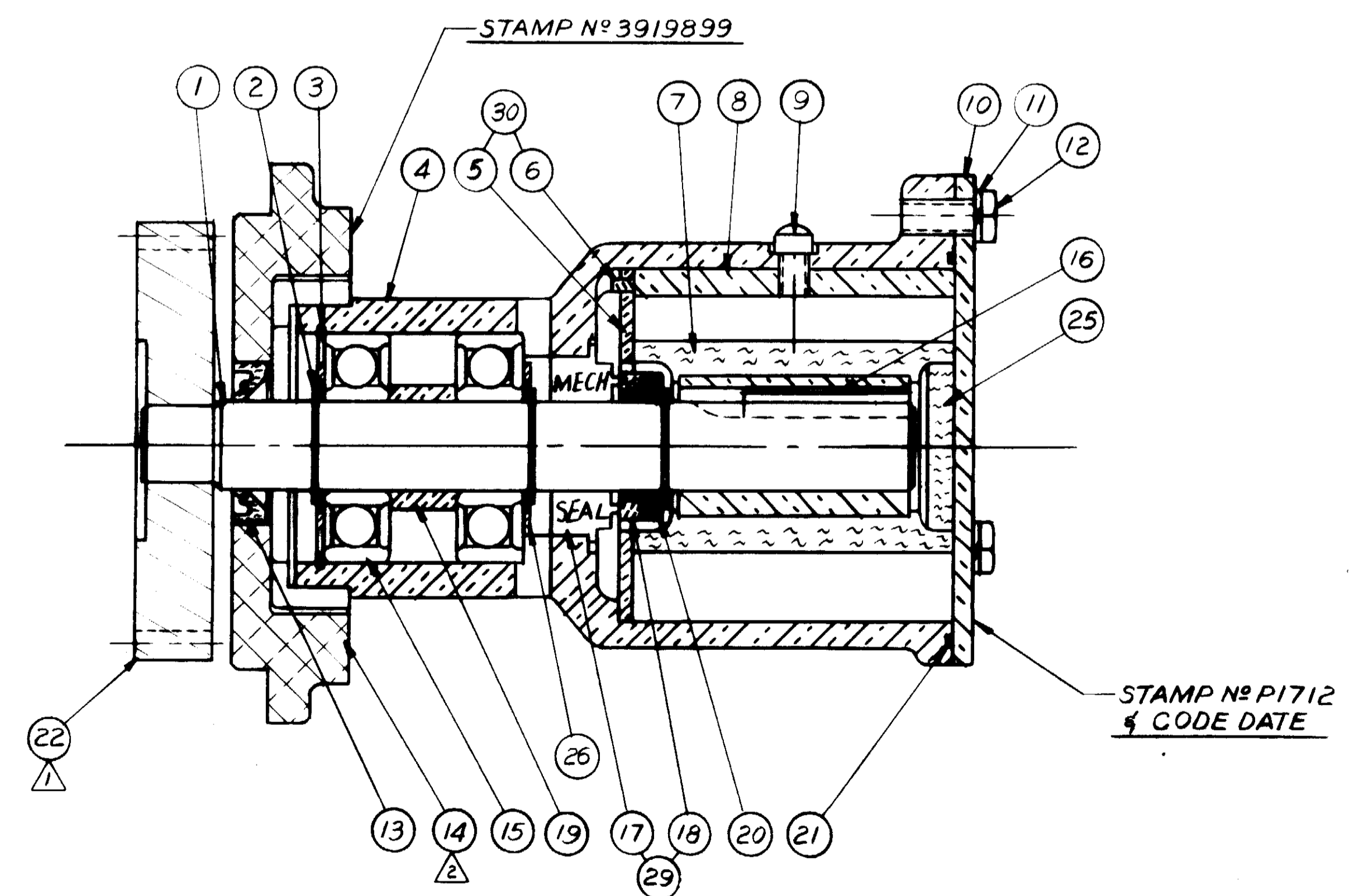
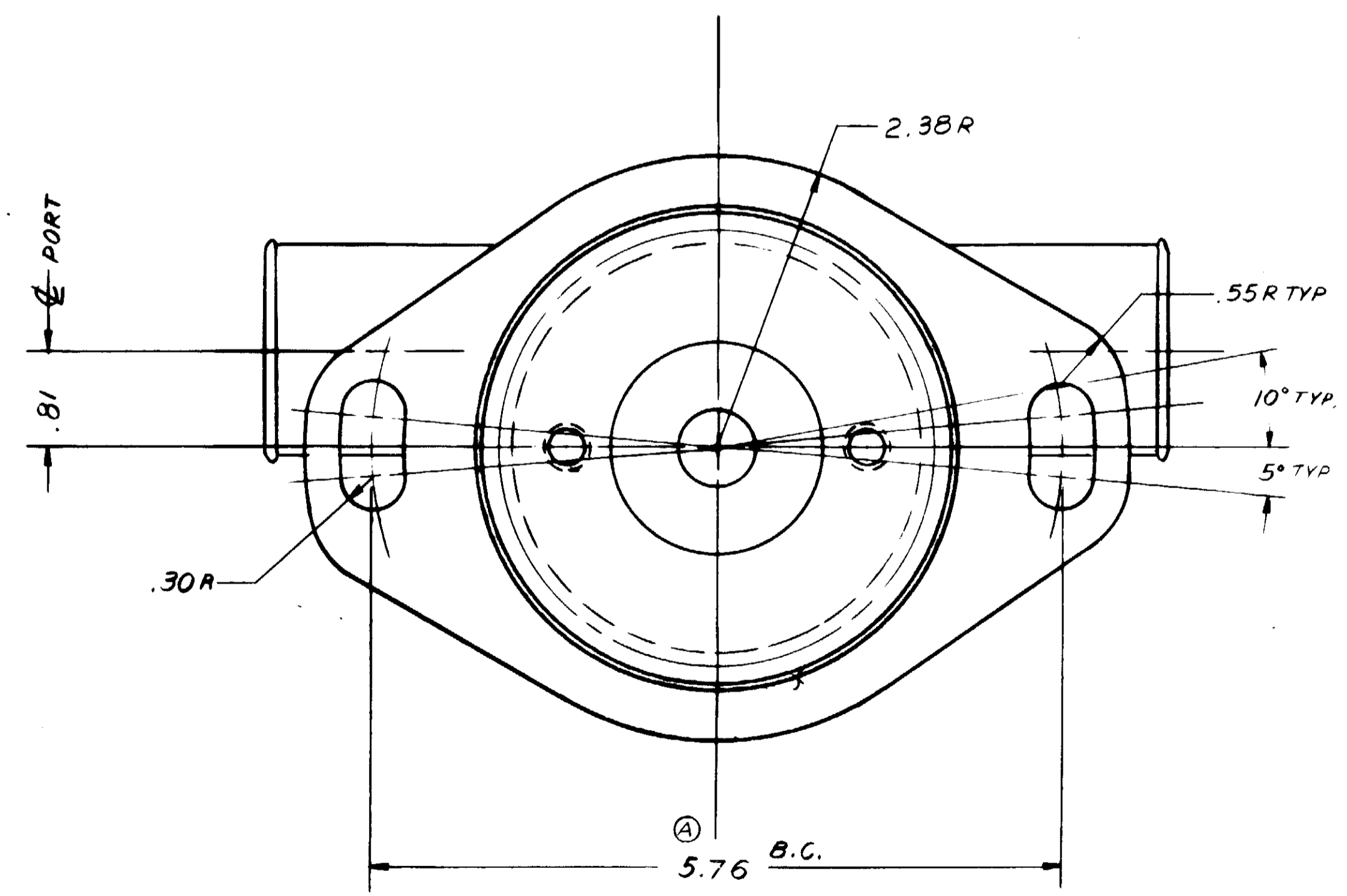
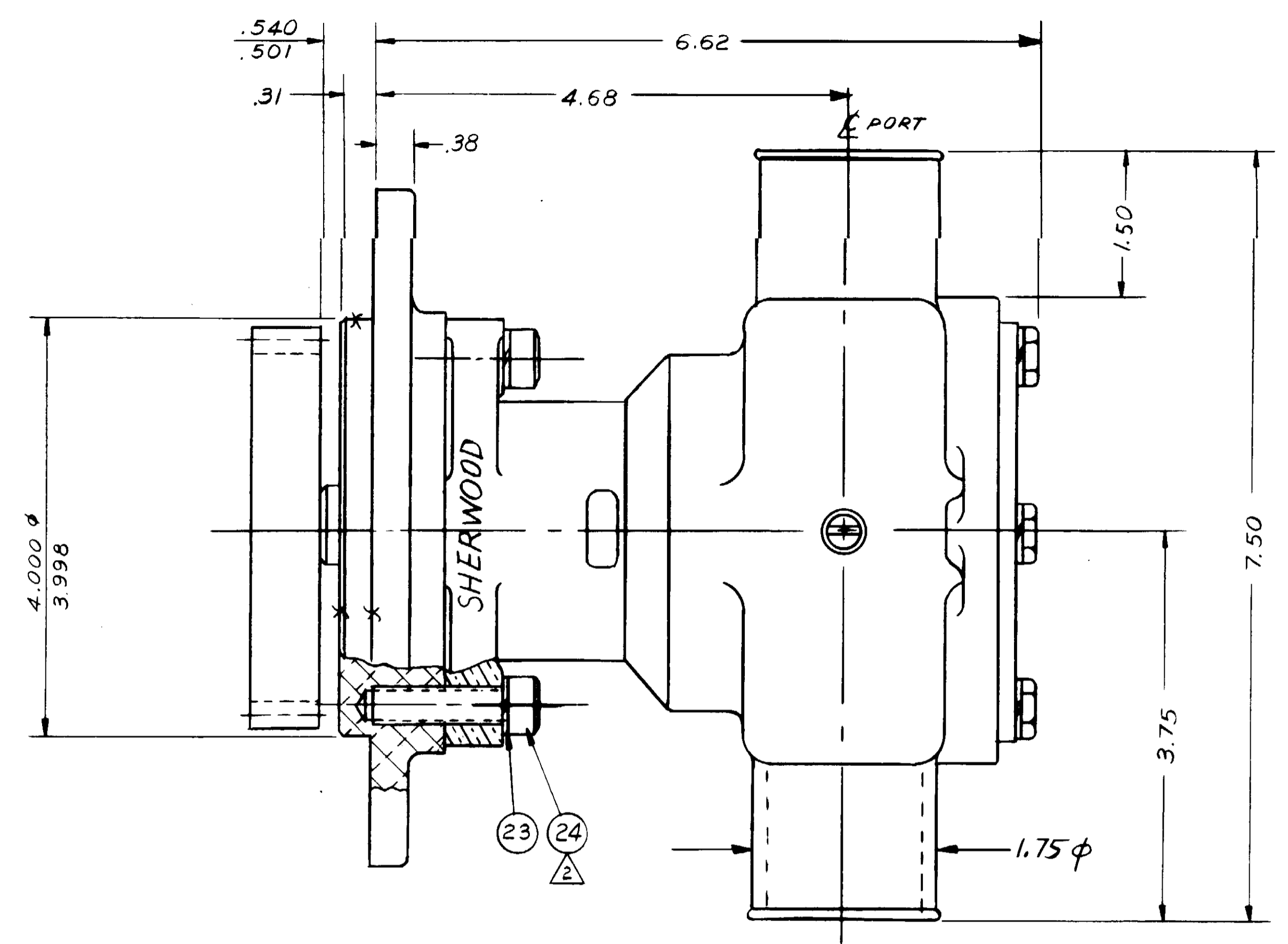


PARTS LIST			
ITEM	DESCRIPTION	REQ'D	PART NO
1	SHAFT	1	16046
2	EXT. RET. RING	3	15952
3	INT. RET. RING	1	15942
4	HOUSING	1	18385
5	END PLATE	1	16047
6	RD. HD. PIN	1	18442
7	RUBBER IMPELLER	1	17000
8	CAM	1	18271
9	CAM SCREW	1	19673
10	COVER PLATE	1	18742
11	5/16 LOCKWASHER	3	15944
12	5/16 HEX. CAPSCREW	3	16029
13	LIP SEAL	1	18971
14	FLANGE MOUNTING ADAPTER	1	19380
15	BALL BEARING	2	15951
16	KEY	1	19209
17	MECH. SEAL	1	15954
18	SEAL SEAT	1	15953
19	SPACER	1	15940
20	FLAT WASHER	1	15959
21	O-RING	1	15945
22	GEAR-EXT. DRIVE	1	14184
23	FLAT WASHER	2	18171
24	3/8 SOC. HD. BOLT	2	16030
25	RUBBER CAP	1	19210
26	FLAT WASHER	2	19614
29	SEAL & SEAT ASS'Y	1	15955
30	END PLATE-PIN ASS'Y	1	18441
31	MINOR SERVICE KIT	1	18284
32	MAJOR SERVICE KIT	1	18285



NOTES:
 1. ITEM N° 22 FURNISHED BY CUMMINS. PART N° 3902175
 2. DEGREASE ITEM N° 24 & TAPPED HOLES IN ITEM N° 14 PRIOR TO ASSEMBLY WITH "LOCTITE PRIMER N° 25556 FOLLOWED BY "LOCTITE" N° 262 TORQUE BOLTS 18 LB-FT

REV.	DESCRIPTION	APPR.	DATE
E	N° 19673 SCREW WAS N° 10515	AVB	8/6/91
D	LOC-TITE N° 262 WAS 271	AVB	8/6/91
C	N° 15959 WASHER WAS 3 REQ'D	AVB	8/6/91
B	N° 19614 FLAT WASHER ADDED	AVB	8/6/91
A	5.76 CORRECTION FROM 5.66	AVB	8/21/91

UNLESS OTHERWISE SPECIFIED CAST DIMENSIONS ± .02 FILLETS & RADI .06 FINISH STOCK .07 MACHINING TOLERANCE INCHES XX ± .01, XXX ± .005 SURFACE ROUGHNESS ANGLES ± 0° 30' CORNER BREAKS .01 MAX.			
□	PARALLELISM .001	□	FLATNESS .001
⊥	SQUARENESS .001	⊙	CONCENTRICITY .001
○	ROUNDNESS .0002	⊖	RUNOUT .001

SHERWOOD 8331 E. Commercial Ave., Denver, Colorado 80231			
DRAWN BY	DATE	CHECKED	DATE
AVB	8/10/90		9/48
TITLE			
RUBBER IMPELLER PUMP			
MATERIAL		DWG. NO.	
SEE DETAILS		P1712	