

PARTS LIST

ITEM	PART NO.	DESCRIPTION	REQ'D
1	13272	SHAFT	7
2	13270	NUT - 1/2-20	1
3	13271	KEY #5 NON-ROK	1
4	4257	BEARING	2
5	6602	LIP SEAL	1
6	10514	LIP SEAL	1
7	10515	SCREW 1/4-20 X 3/8	1
8	12231	GASKET O RING	1
9	11797	SCREW 1/4-20 X 5/8	4
10	10627	CAM	1
11	11795	COVER	1
12	4432	KEY #9	1
13	9959	IMPELLER	1
14	12582	RET. RING	1
15	11794	BODY	1
16	4259	RET. RING	1
17	13273	WASHER	1

(K)
(D) (I)
(J)
(C) (O)
(M)
(L)

PACKAGING:

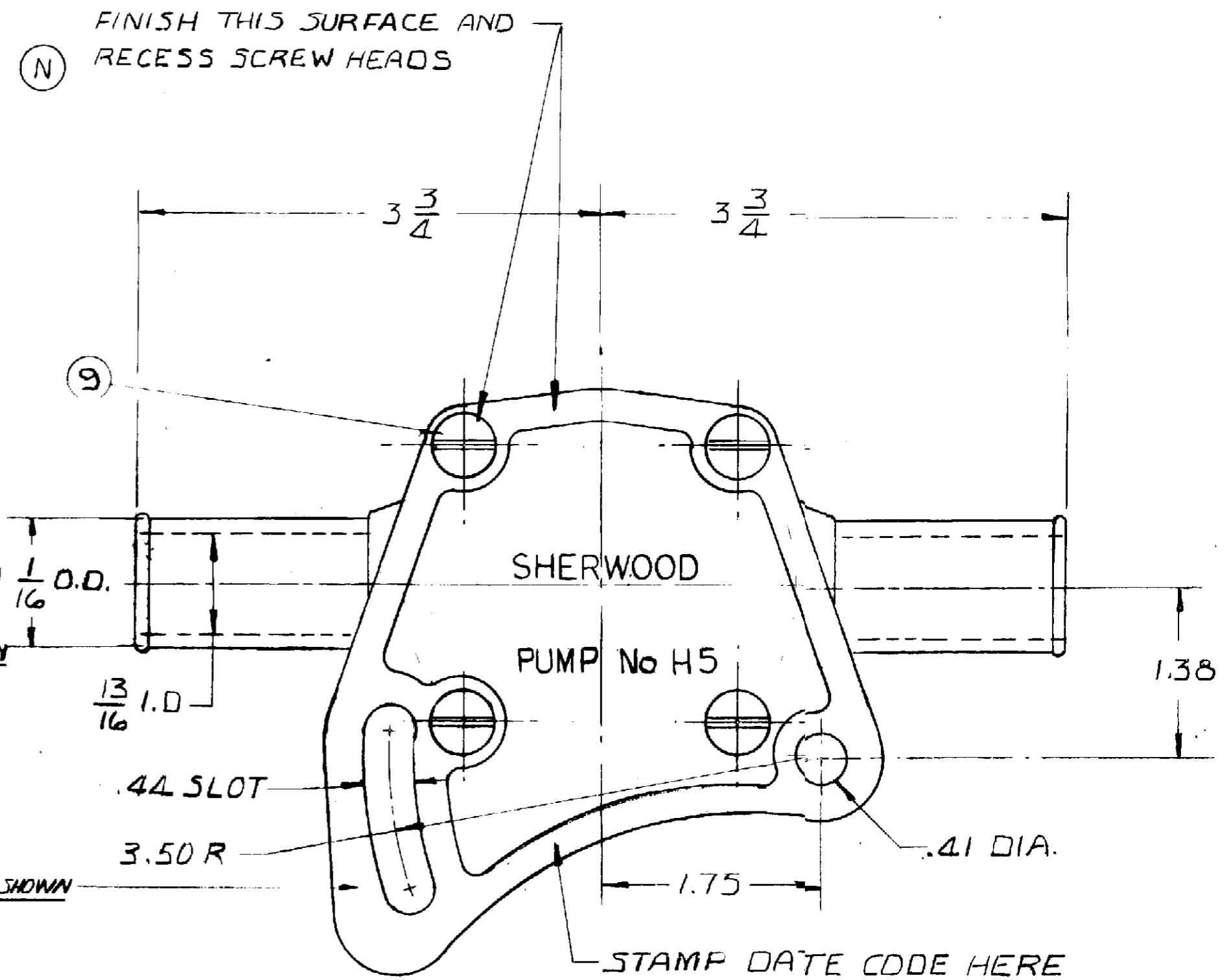
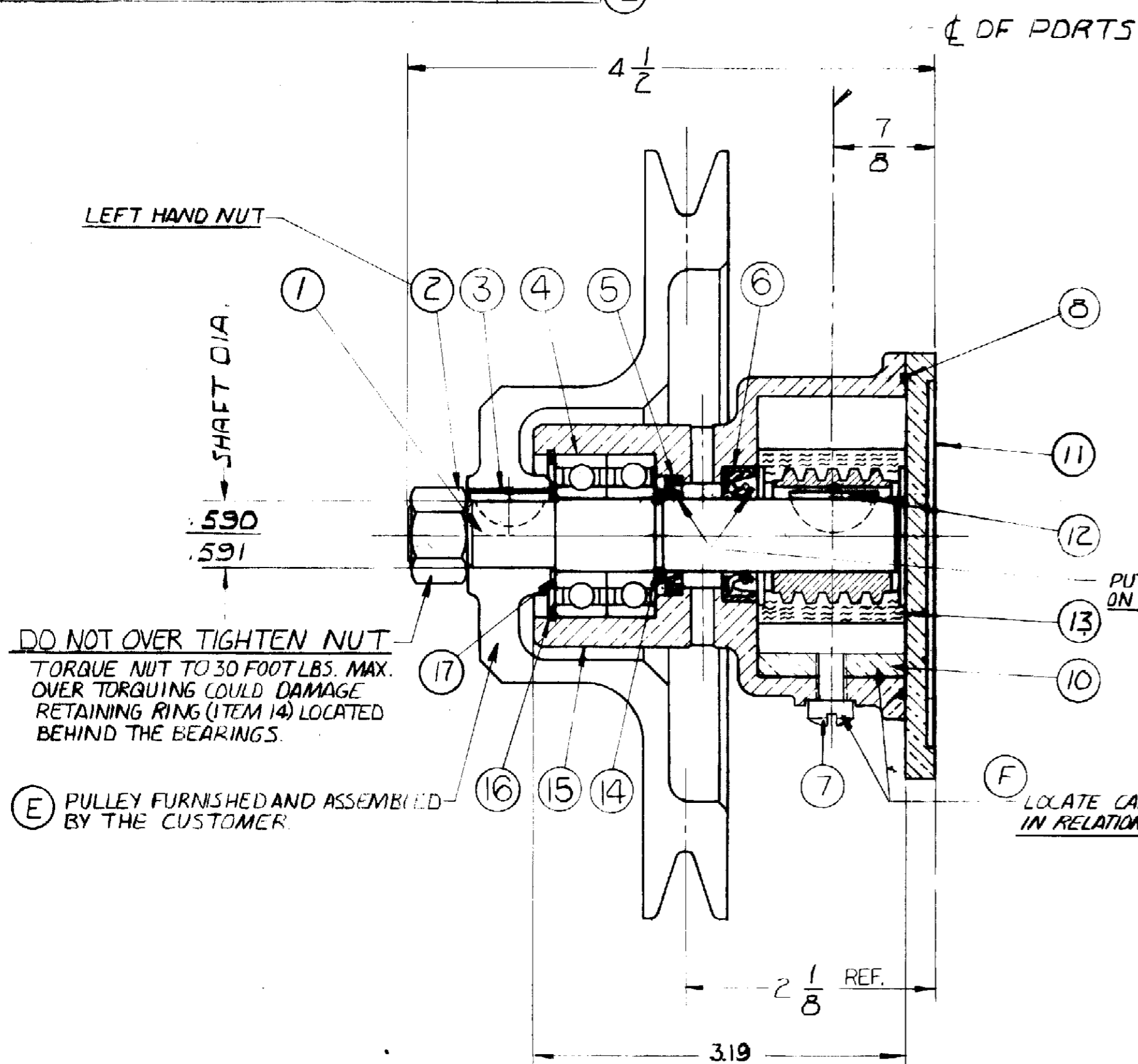
No 11516 PALLET	1 REQ'D
14120 TUBE CONTAINER	1 REQ'D
14122 PAD	6 REQ'D (G)
18025 INSERT	4 REQ'D

UNIT PACKAGING:

No 17636 CARTON W	1 REQ'D
12209 LABEL	1 REQ'D

(H) MAJOR REPAIR KIT NO. 12980
MINOR REPAIR KIT NO. 12981

H5



DO NOT OVER TIGHTEN NUT
TORQUE NUT TO 30 FOOT LBS. MAX.
OVER TORQUING COULD DAMAGE
RETAINING RING (ITEM 14) LOCATED
BEHIND THE BEARINGS.

(E) PULLEY FURNISHED AND ASSEMBLED
BY THE CUSTOMER.

PUT LUBRIPLATE
ON LIPOF SEAL ONLY

(F) LOCATE CAM / SCREW
IN RELATION TO COVER AS SHOWN

REV	DESCRIPTION	CHKR	DATE
C	...		
N	FINISH NOTE ADDED TO COVER	RM	11-3-82
M	12582 WAS 4258	RM	12-15-80
L	13273 WASHER ADDED	RM	12-15-80
K	13272 SHAFT WAS 11796	RM	12-5-80
J	13271 KEY WAS 524		
I	13270 NUT ADDED		
H	REPAIR KITS ADDED	RM	7-29-80
G	12 PUMPS PER CARTON WAS B	RM	1-14-80
F	NOTE ADDED		
E	PULLEY ASS'Y NOTE REVISED		
D	12305 RET. RING REMOVED		
C	4257 WAS 12211. BAG.	RM	9-4-79
B	3 3/4 WAS 2 3/4	RM	6-4-79
A	REDESIGN		

FLOW - .0068 GAL / REV.

CURVE NO. 79002R-79003R

UNLESS OTHERWISE SPECIFIED
TOLERANCE TO BE
CAST DIMENSION ± .020
MACHINED DIMENSION
FRACTIONAL ± .010
DECIMAL ± .005
ANGLES ± 1/2°
MACHINED SURFACE ROUGHNESS
ALLOW 1/16 STOCK ON ALL FINISHED
SURFACES FOR MACHINING.
BREAK ALL SHARP EDGES .010 MAX.
CAST FILLETS AND RADIUS 1/16 R

PERKINS ENGINE INC. #NA005027

SHERWOOD
A DIVISION OF HYPRO CORPORATION
1331 E. JEFFERSON AVE. • DETROIT, MICHIGAN 48207

DRAFTSMAN	DATE	CHECKER	DATE	ASSY NO
RBM	6-21-78			

TITLE: **PUMP ASSY.-RUBBER IMP.**
MATERIAL: SEE DETAILS
DWG NO: **H5**

PROJ 195