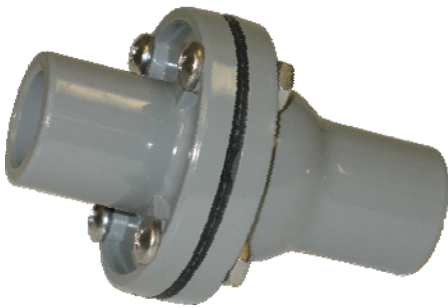




Sea-Lect® Check Valve CV-0400D



- Creates & maintains pump prime
- Doubles pump lift for Guzzler "400" Series pumps
- Prevents fluid backflow
- Durable, lightweight Delrin® plastic
- Accommodates 1/2" - 1-1/4" hose connection types
- Available in a wide range of hose connection types
- Compatible with Guzzler 400 Series pumps

Materials

Body *	Delrin / Gray
Valve *	Flapper: Buna-N, White (Pigment-free) Buna-N, Neoprene, Viton, EPDM, Silicone; Duckbill: Buna-N; Umbrella: Silicone
Fasteners	Stainless Steel

* In contact with fluid

Valve Options

Flapper — General purpose liquid transfer



Duckbill — For dirty liquid and sewage. Permits mounting in any position.



Umbrella — Most efficient for pumping clean liquid. Also used for air and vacuum service.



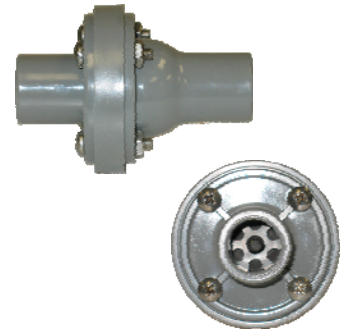
Performance

Max Pressure	20 psi (1.4 kg/cm ²)
Max Lift	12 ft (3.7 m)
Pressure Drop (Cracking Pressure)	Flapper: 0.0 psi (0.0 kg/cm ²)
	Duckbill: 0.0 psi (0.0 kg/cm ²)
	Umbrella: 3.6 x 10 ⁻² psi (1.0 in. of water) (2.5 x 10 ⁻³ kg/cm ²)
Max Service Temp	150°F (66°C)

Available Ports

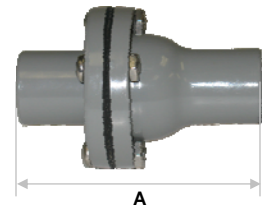
	in	1/2	5/8	3/4	1	1-1/8	1-1/4
	cm	1.27	1.60	1.91	2.54	2.86	3.18
Hose (Smooth)				•	S	•	•
NPT Female (Tapped)		•		•			
NPT Male (Threaded)				•	•		
Male Garden Hose (Threaded)				•			
Barbed				•		•	
Barbed Adapter		•	•	•			

S Standard • Optional

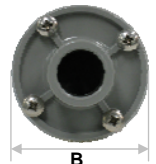


CV-0400D Check Valve equipped with umbrella valve.

Note: Dimensions shown below are for CV-0400D Check Valve equipped with flapper valve.



A



B

	in	cm
A	3-5/16	8.4
B	2-1/4	5.7
Weight	0.15 lb	0.07 kg

Sea-Lect® Check Valve CV-0400D



Example: CV-0400D-1-5050

- Sea-Lect Check Valve
- Model style 0400D (Delrin/Gray)
- Buna-N Flapper Valve
- 1" Smooth Hose Connections

CV -0400D -1 -50 50

Sea-Lect Product	
Option	Code
Check Valve	CV

Family	
Option	Code
1" Nominal Port Size, Delrin	-0400D

Valve	
Option	Code
Flapper (Buna-N)	-1
Flapper (White Buna)	-2
Flapper (Neoprene)	-3
Flapper (Viton)	-4
Flapper (EPDM)	-5
Duckbill (Buna-N)	-6
Umbrella (Silicone)	-7

Hose Connections		
Option	Code	
	Inlet	Outlet
1/2" NPT Tapped	-31	31
1/2" Barbed Adapter	-37	37
5/8" Barbed Adapter	-27	27
3/4" Smooth	-40	40
3/4" NPT Tapped	-41	41
3/4" NPT Threaded	-42	42
3/4" Barbed	-43	43
3/4" Male Garden Hose	-46	46
3/4" Barbed Adapter	-47	47
1" Smooth	-50	50
1" NPT Threaded	-52	52
1-1/8" Smooth	-60	60
1-1/8" Barbed	-63	63
1-1/4" Smooth	-70	70