



Sea-Lect® Y-Valve YV-094D



- Durable, lightweight Delrin® plastic
- Accommodates 1/2" - 1" hose
- Easy turning handle made from durable, epoxy-coated aluminum
- Full port opening
- Locking tab on handle
- Arrows on handle indicate flow path
- Supports either 2 or 3 flow-path mode
- Free-standing for inline installation

Performance

Max Pressure	40 psi (2.8 kg/cm ²)
Max Service Temp	150°F (66°C)

Available Ports

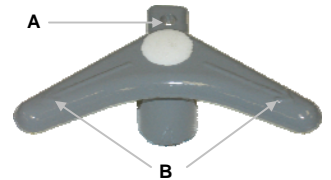
	in	1/2	5/8	3/4	1
	cm	1.27	1.6	1.91	2.54
Hose (Smooth)					S
NPT Female (Tapped)		•			
NPT Male (Threaded)				•	
Barbed Adapter (Straight)		•	•	•	
90° Barbed Adapter (Elbow)		•	•	•	

S Standard • Optional

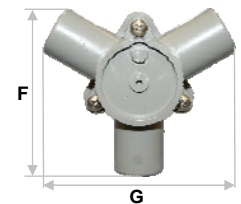
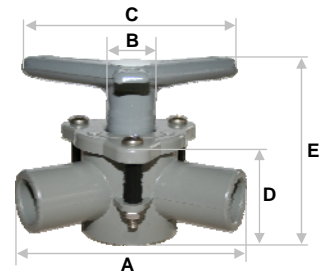
Materials

Body & Ports *	Delrin / Gray
Handle	Epoxy-coated Aluminum / Gray
Seat *	Natural Rubber
Fasteners	Stainless Steel
Spacers	Polypropylene/ Black

* In contact with fluid



All-aluminum Y-Valve handle features lockable tab (A) and arrows (B) to indicate direction of flow.

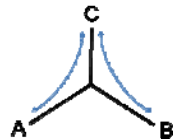


	in	cm
A	4	10.2
B	13/16	2.1
C	4-1/8	10.5
D	1-7/8	4.8
E	3-1/8	7.9
F	3-9/16	9.0
G	4	10.2
Weight	0.45 lb	0.20 kg

Optional 2-Way or 3-Way Flow Mode

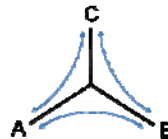


Easily removable travel stop ring converts from 2 flow-path mode to 3 flow-path mode



2 Flow-Path Mode

Flow path A-to-C or B-to-C



3 Flow-Path Mode

Flow path A-to-C, B-to-C or A-to-B

Sea-Lect® Y-Valve YV-094D



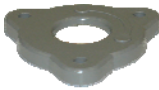
Example: YV-094D-L-30-505050

- Sea-Lect Y-Valve
- Model style 94 (Delrin/Gray)
- Inline mounting
- Epoxy-coated Aluminum V-Shaped Handle
- No Trim Ring
- 1" Smooth Hose Connections

Handle



Bonnet



Spacers



Travel Stop



Seat



Plug

O-Ring



Body



Sea-Lect Product	
Option	Code
Y-Valve	YV

Mounting Style	
Option	Code
Inline	-L

Trim Ring (Face Plate)	
Option	Code
None	0

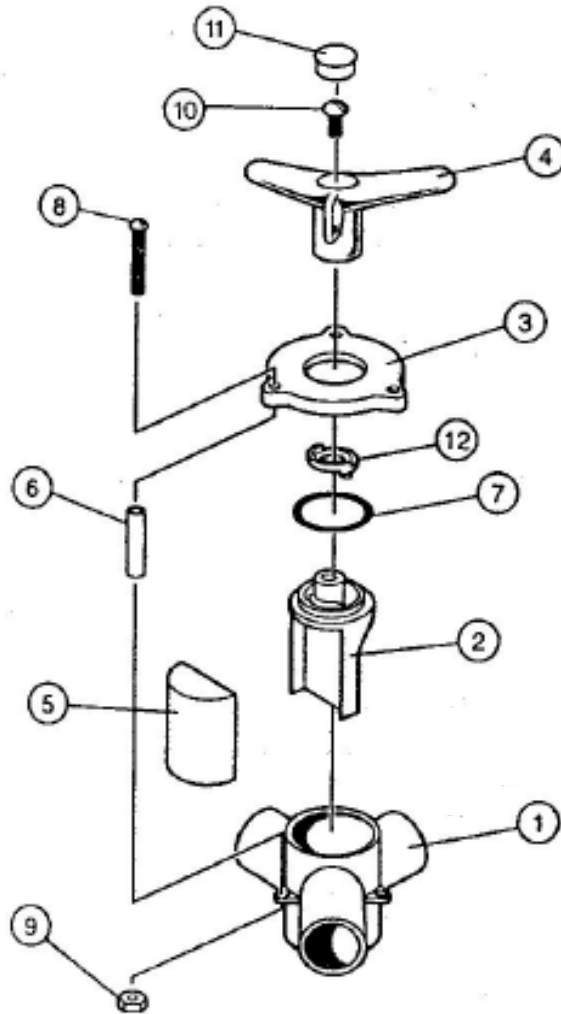
YV -094D -L -3 0 -50 50 50

Family	
Option	Code
1" Nominal Port Size	-094D

Activation	
Option	Code
Straight Handle (Delrin)	-2
V-Handle (Aluminum)	-3

Hose Connections			
Option	Code		
	Port 1	Port 2	Port 3
1/2" NPT Tapped	-31	31	31
1/2" Barbed Adapter	-37	37	37
1/2" 90° Barbed Adapter	-38	38	38
5/8" Barbed Adapter	-27	27	27
5/8" 90° Barbed Adapter	-28	28	28
3/4" NPT Threaded	-42	42	42
3/4" Barbed Adapter	-47	47	47
3/4" 90° Barbed Adapter	-48	48	48
1" Smooth	-50	50	50

ITEM	PART NAME
1	Body
2	Plug
3	Bonnet
4	Handle
5	Seat
6	Spacer - 0.885 in (3)
7	O Ring #220
8	Machine Screw 10-24 x 1 ½ (3)
9	Nut 10-24 (3)
10	Machine Screw ¼ -20 x ½
11	White Plug
12	Stop Ring



Sea-lect® Y-Valve 94 Series



930 Waterman Avenue East Providence, RI 02914
 Ph: 401-438-1110 888-438-1110 Fax: 401-438-2713
www.thebosworthco.com