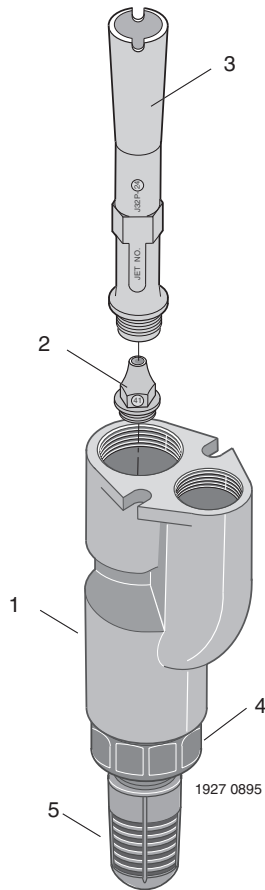
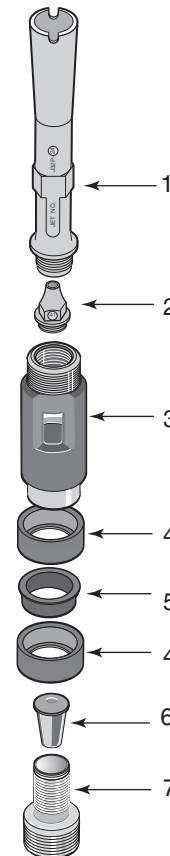


## Deep Well Installation

### 4" Double Pipe Kit for 4200 and 4300 Series Pumps Kit FP4800



### 2" Single Pipe Kit for 4200 and 4300 Series Pumps Kit FP4840



KEY	DESCRIPTION	PART NUMBER
1	Ejector Body	N40-92
2	Nozzle (#51)	J34P-41
2	Nozzle (#52)	J34P-42
3	Venturi	J32P-24
3	Venturi	J32P-18
4	Check Valve	N212-12P
5	Strainer	L8-1P

KEY	DESCRIPTION	PART NUMBER
1	Venturi	J32P-24
1	Venturi	J32P-18
2	Nozzle (#52)	J34P-42
2	Nozzle (#54)	J34P-44
3	Jet Body	J40-24
4	Cup Leather (2)	J57-1
5	Spacer	J43-14P
6	Check Valve	P122-10B
7	Valve Seat	J66-13
•	Casing Adapter	L05548
•	Turned Couplings 1-1/4 NPT (5)	U11-1

• Not Illustrated.