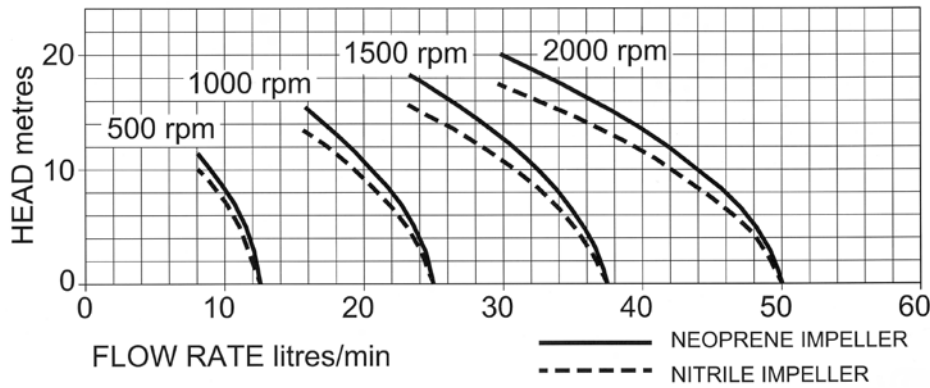


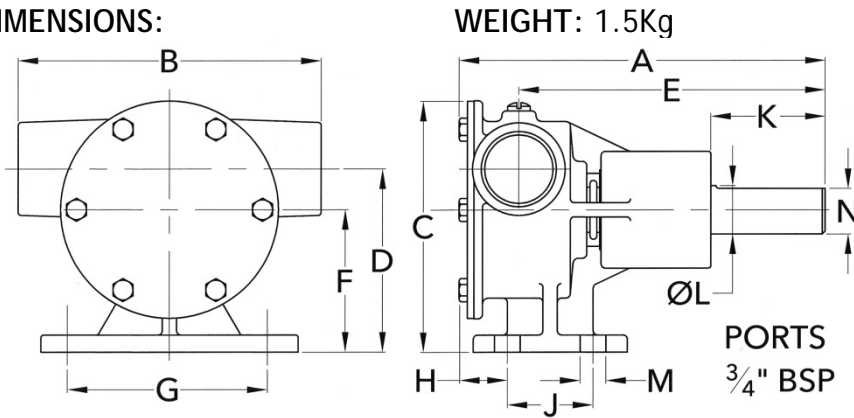
PERFORMANCE:



MODEL	Maximum flow rate		Maximum head	
	l/min	gall/min	metres	feet
52040-2001	50	11	20	65
52040-2003	50	11	17	55

2000rpm

DIMENSIONS:



A	B	C	D	E	F	G	H	J	K	L	M	N
128	106	88	64	107	50	70	17	30	40	Ø17	9	16

MATERIALS OF CONSTRUCTION:

Body	Bronze
Impeller	Neoprene or Nitrile
Shaft	Stainless steel type 316
Shaft seal	Lip type
Bearings	Twin row, ball type
Port type	3/4" BSP to BS21 (DIN2999)

MODELS:

52040-2001 Standard Neoprene impeller

52040-2003 Oil resistant Nitrile impeller

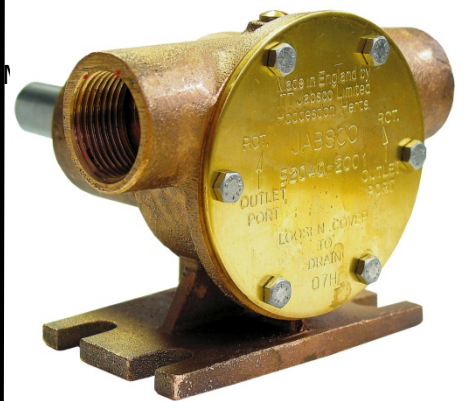
52040-2021 High pressure Neoprene



a xylem brand

BRONZE FLEXIBLE IMPELLER PEDESTAL PUMP

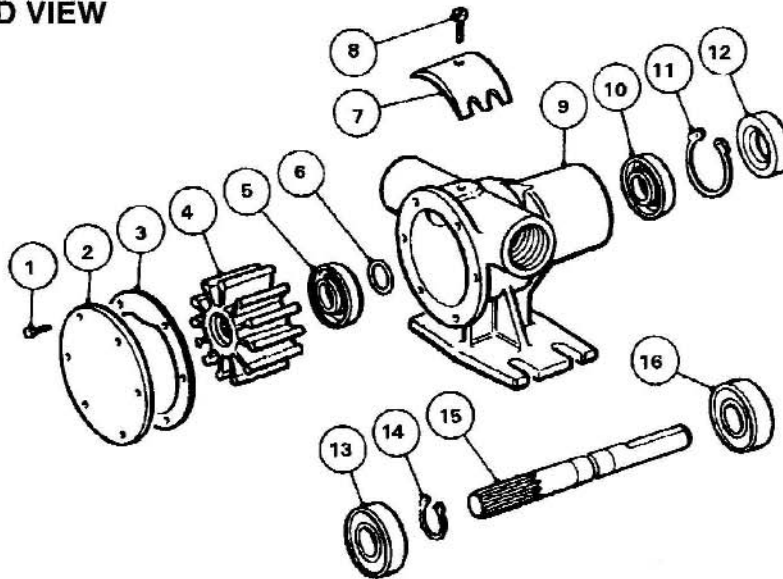
52040 SERIES



PUMP with 3/4" BSP PORTS

- * Constructed from marine quality bronze and stainless steel
- * Self-prime from dry up to 2.4m
- * Easy to service and maintain
- * Will tolerate abrasive wear
- * Handles hard and soft solids without clogging
- * Can pump in either direction
- * Will not airlock

EXPLODED VIEW

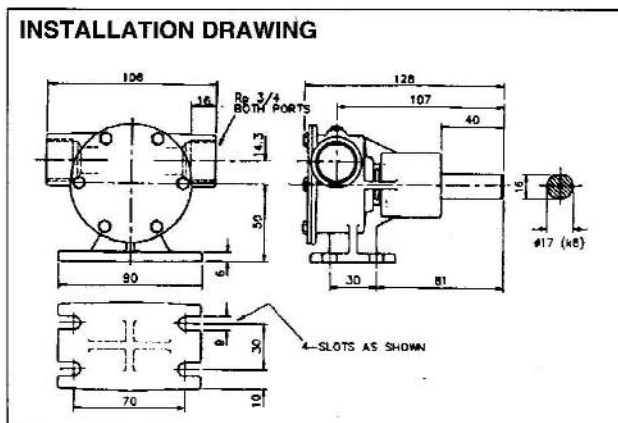


PARTS LIST MODEL 52040-2001

Key	Description	Qty	Part No
1	Endcover Screw *	6	X3001-095F
2	Endcover	1	3992
3	Gasket *	1	3298
4	Impeller *	1	1210-0001B
5	Seal *	1	SP2700-1027
6	"O" Ring	1	X4020-215A
7	Cam	1	490
8	Cam Screw	1	SP1003-01
9	Body	1	52044-2000
10	Bearing Seal	1	SP2700-1027
11	Retaining Ring	1	SP1701-137
12	Bearing Seal	1	SP2701-1015
13	Bearing	1	SP2601-0451
14	Retaining Ring	1	X3085-017A
15	Shaft	1	52047-0000
16	Bearing	1	SP2601-0451
	Spline Seal	1	4345

Service Kit No SK384-0101 Contains Parts marked*

INSTALLATION DRAWING



Options:-

High Pressure Impeller

Part No 3085-0001B

Nitrile Impeller

Part No 1210-0003B

1/2 Cam

Part No 10336

1/2 Cam Screw

Part No SP1003-09

SERVICE INSTRUCTIONS

Dis-Assembly Inspect all parts for wear or damage and replace if necessary

1. Remove endcover screws, endcover and gasket.
2. Remove impeller.
3. Loosen cam screw and remove cam, (clean off old jointing compound).
4. Remove lip seal from body.
5. Insert screwdriver between O.D. of outer bearing seal and pump bore and pry out seal.
6. Remove bearing retaining ring.
7. Press on impeller drive end of shaft to remove shaft and bearing assembly. Heating outside of body will ease dis-assembly.
8. Remove bearing to shaft retaining ring.
9. Supporting bearing inner race, press shaft through bearing.
10. Using extreme care not to mar body bore, insert screwdriver between O.D. of inner bearing seal and pump bore and pry out seal.

Assembly

1. Lubricate inner bearing seal with grease and press into body bearing seal bore with lip facing away from bearing bore.
2. Support shaft and press bearing onto shaft.
3. Install bearing to shaft retaining ring with flat side towards bearing.
4. Position slinger in body drain area. Insert splined end of shaft through bearing bore and guide slinger over shaft until bearing contacts body.
5. Press on bearing outer face, install bearing into bore.
6. Install bearing to body retaining ring in body groove with flat side towards bearing.
7. Lubricate outer bearing seal with grease and press into bearing bore until it is flush with the body (spring facing outwards).
8. Lubricate O.D. and lip of seal, then push into place, using care not to damage or cut seal lip, (lip faces impeller bore).
9. Coat cam screw threads, and top of cam with a non setting jointing compound and install in body with the cam screw.
10. Lightly grease impeller bore and start impeller into bore with a rotary motion until splines engage, then push into bore.
11. Install gasket and endcover, and secure with endcover screws.