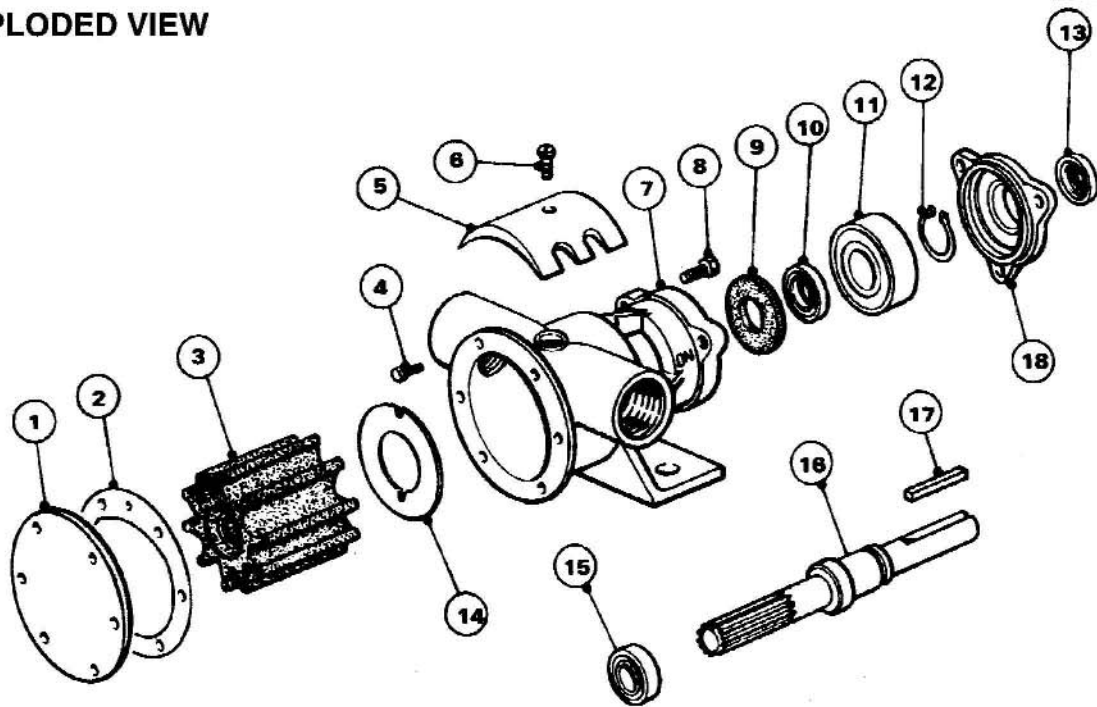


EXPLODED VIEW



PARTS LIST MODEL 52080-2001

Key	Description	Qty	Part No	Key	Description	Qty	Part No
1	Endcover	1	3993	10	Inner Bearing Seal	1	SP2700-48
2	Gasket*	1	890	11	Bearing	1	SP2600-06
3	Impeller*	1	17937-0001B	12	Retaining Ring	1	SP1700-247
4	Endcover Screw*	6	X3001-147F	13	Outer Bearing Seal	1	SP2700-1027
5	Cam	1	934	14	Wearplate	1	4156
6	Cam Screw	1	SP1004-09	15	Seal*	1	SP2700-1027
7	Body	1	50084-2100	16	Shaft	1	52087-0000
8	Screw	3	X3003-178F	17	Key	1	X4000-209A
9	Slinger	1	3180	18	Outboard Seal Housing	1	52081-0000
					Spline Seal	1	4345

Service Kit No SK406-0001

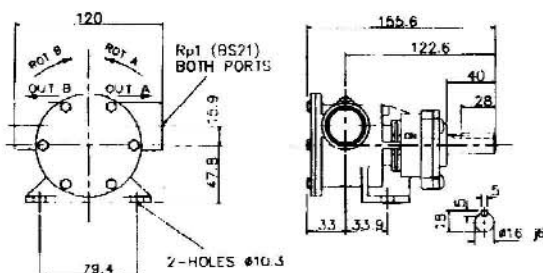
Contains Parts marked*

Options:-

High Pressure Neoprene Impeller
Nitrile Impeller
1/2 Cam
1/2 Cam Screw
2/3 Cam
2/3 Cam Screw

Part No 5915-0001B
Part No 17937-0003B
Part No 2431
Part No SP1004-10
Part No 3255
Part No SP1004-10

INSTALLATION DRAWING



SERVICE INSTRUCTIONS

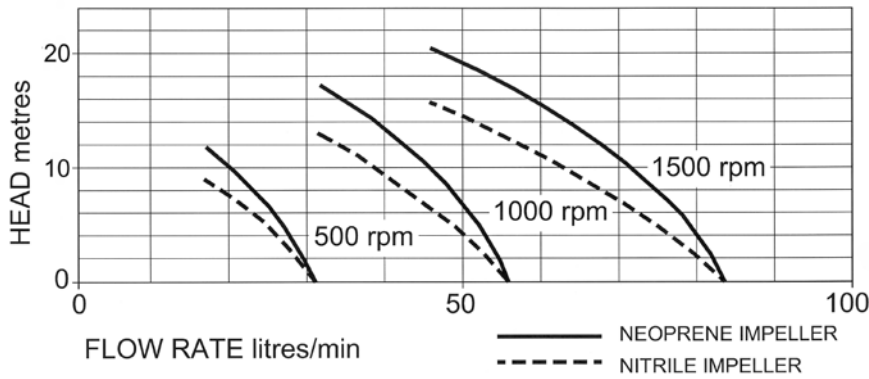
Dis-Assembly Inspect all parts for wear or damage and replace if necessary

1. Remove endcover screws, endcover and gasket.
2. Remove impeller.
3. Loosen cam screw and remove cam, (clean off old jointing compound).
4. Remove wearplate.
5. Remove lip seal from body.
6. Remove fixing screws and outboard seal housing, together with seal.
7. Press shaft on impeller drive end to remove shaft and bearing from pump. Heating outside of body will ease dis-assembly.
8. Remove bearing retaining ring from shaft.
9. Supporting bearing inner race, press through bearing.
10. Remove inner bearing seal if it needs replacing.

Assembly

1. Lubricate inner bearing seal with grease and press into body bearing seal bore with lip facing away from bearing bore.
2. Press shaft into bearing, supporting inner race of bearing. Fit bearing retaining ring onto shaft.
3. Position slinger in body drain area. Insert splined end of shaft through bearing bore and guide slinger over shaft until bearing contacts body. Press on bearing outer race, install bearing into bore.
4. Fit new outer bearing seal in outboard seal housing and fit to pump, securing with retaining screws.
5. Lubricate OD and lip of seal, then push into place using care not to damage or cut seal lip. (Lip faces impeller bore).
6. Fit wearplate, aligning dimple in wearplate with slot in cam.
7. Coat cam screw threads, and top of cam with a nonsetting jointing compound. Install in body.
8. Lightly grease impeller bore and start impeller into bore with a rotary motion until splines engage, then push into bore.
9. Fit endcover and gasket and secure with endcover screw.

PERFORMANCE:

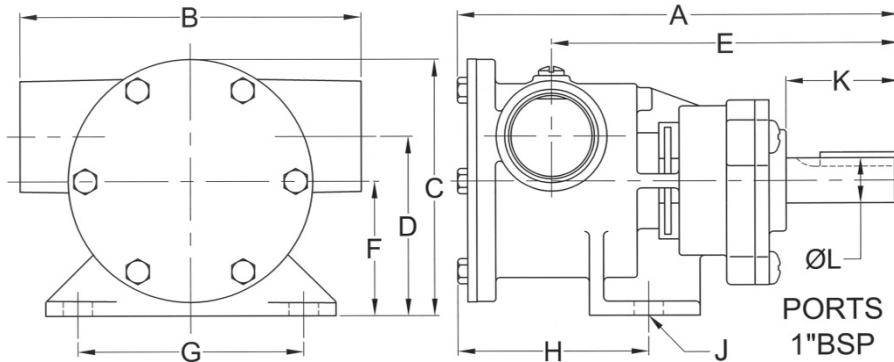


MODEL	Maximum flow rate		Maximum head	
	l/min	gall/min	metres	feet
52080-2001	82	18	20	65
52080-2003	82	18	18	59

Max Power absorbed 550 watt at 1500rpm

DIMENSIONS:

WEIGHT: 2.1Kg



A	B	C	D	E	F	G	H	J	K	ØL
156	120	91	64	123	48	79	67	10	40	Ø16

MATERIALS OF CONSTRUCTION:

Body	Bronze
Impeller	Neoprene or Nitrile
Wearplate	Replaceable
Shaft	Stainless steel type 316
Shaft seal	Lip type
Bearings	Twin row, ball type
Port type	1" BSP to BS21 (DIN2999)

MODELS:

52080-2001 Standard Neoprene Impeller

52080-2003 Oil resistant Nitrile

52080-2021 High pressure Neoprene



a xylem brand

BRONZE FLEXIBLE IMPELLER PEDESTAL PUMP

52080 SERIES



PUMP with 1" BSP PORTS

- * Constructed from marine quality bronze and stainless steel
- * Self-prime from dry up to 2.4m
- * Easy to service and maintain
- * Will tolerate abrasive wear
- * Handles hard and soft solids without clogging
- * Can pump in either direction
- * Will not airlock



Xylem Water Solutions UK Ltd
Bingley Road • Hoddesdon • Hertfordshire • EN11 0BU • UK

Telephone: +44 (0)1462 480380 Fax: +44 (0)1462 482422
mail@cleghorn.co.uk www.jabscoshop.com

DOC598/12