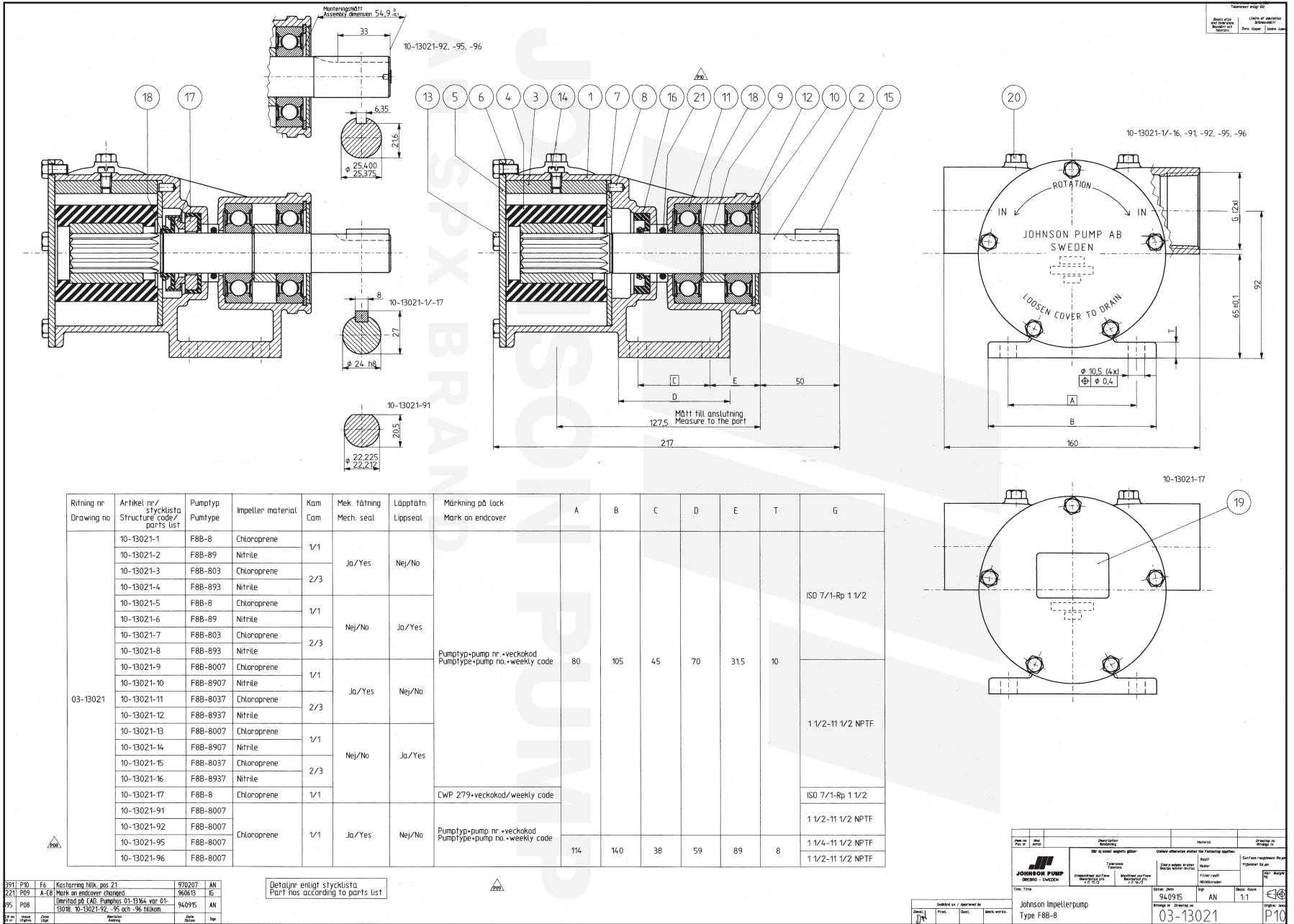


F8B-8 Impeller pump
Art. No. 10-13021-1

Service Kit No. 09-45575

Part no.	Description GB	Position	Quantity
01-13164-1	BODY F8B-8/5001	1	1
01-35132	SHAFT F8B-8	2	1
01-42680	CAM 1/1 F8B-	3	1
08-819B	IMPELLER F8B-9	4	1
01-42422-1	ENDCOVER F8B/F9B-	5	1
01-42424	GASKET F8B/F9B-	6	1
01-42423	WEARPLATE F8/F80/F9/F95B-	7	1
01-42426	PIN	8	1
01-45374	SPACER F8B-8/-5001	9	1
01-45380	WASHER F8B-8	10	1
0.3431.780	BALL BEARING 6305-2RS1	11	2
0.0371.062	RETAIN. RING BORE D62 DIN472 SPRST	12	1
0.0138.134	TAP BOLT M6X12 DIN933 A2	13	5
01-46794-02	SCREW 1/4"-20UNCX10 AL.BRONZE	14	1
0.0502.231	KEY 8X7-28 DIN6885A C45K	15	1
0.2247.008	MECH.SEAL COMPL FA25.47.14	17	1
0.0370.525	EXT. CIRCLIP D25 DIN471 ST	18	2
0.2172.573	O-RING 23.4X3.53 BS1806 NBR70	21	1
01-46027-1	LABEL DRY RUNNING (4-LANG.)	0	1
0.3444.004	CARTON NO 4 290X195X180	0	1
IB-501/01	INSTR.MANUAL FB-8 SERIES	0	1
09-46506	WARNING PACKAGE, INDUSTRIAL	0	1
01-47039	BOX LABEL JP 135X45	0	1



Ritning nr Drawing no	Artikel nr/ Structure code/ Stycklista parts list	Pumptyp Pumtype	Impeller material	Kam Cam	Mek. tätning Mech. seal	Läpptät. Lippseal	Märkning på lock Mark on endcover	A	B	C	D	E	T	G	
03-13021	10-13021-1	F8B-8	Chloroprene	1/1	Ja/Yes	Nej/No	Pumptyp=pump nr.+veckokod Pumptype=pump no.+weekly code	80	105	45	70	315	10	ISO 7/1-Rp 1 1/2	
	10-13021-2	F8B-89	Nitrile												
	10-13021-3	F8B-803	Chloroprene												
	10-13021-4	F8B-893	Nitrile												
	10-13021-5	F8B-8	Chloroprene	1/1	Nej/No	Ja/Yes									
	10-13021-6	F8B-89	Nitrile												
	10-13021-7	F8B-803	Chloroprene												
	10-13021-8	F8B-893	Nitrile	2/3	Nej/No	Ja/Yes									
	10-13021-9	F8B-8007	Chloroprene												
	10-13021-10	F8B-8907	Nitrile												
	10-13021-11	F8B-8037	Chloroprene	2/3	Nej/No	Ja/Yes									
	10-13021-12	F8B-8937	Nitrile												
	10-13021-13	F8B-8007	Chloroprene												
	10-13021-14	F8B-8907	Nitrile	1/1	Nej/No	Ja/Yes									
	10-13021-15	F8B-8037	Chloroprene												
	10-13021-16	F8B-8937	Nitrile												
	10-13021-17	F8B-8	Chloroprene	1/1	Ja/Yes	Nej/No									CWP 279+veckokod/weekly code
10-13021-91	F8B-8007	Chloroprene	1/1	Ja/Yes			Nej/No	Pumptyp=pump nr.+veckokod Pumptype=pump no.+weekly code	1 1/2-11 1/2 NPTF						
10-13021-92	F8B-8007							1 1/2-11 1/2 NPTF							
10-13021-95	F8B-8007	1 1/4-11 1/2 NPTF													
10-13021-96	F8B-8007	1 1/2-11 1/2 NPTF													

3911	P10	F4	Kastarna tillk. nos 21	970207	AN
2211	P09	A-18	Mark an endcover changed	960619	IE
955	P08		Ömring på CAD Pumpus 01-19184 var 01-19018, 10-13021-92, -95 och -96 tillkom.	940915	AN
3700	1000	1000			

Detaljé enligt stycklista
Part nos according to parts list

 JOHNSON PUMP OMERO - SWEDEN	Typ och storlek Type and size Type F8B-8	Övervaknings och driftinstruktioner Operation and maintenance instructions 940915	Övrigt tekniskt material Other technical material 940915	Övrigt tekniskt material Other technical material 940915	Ytterligare tekniskt material Further technical material 940915	Ytterligare tekniskt material Further technical material 940915	Ytterligare tekniskt material Further technical material 940915	Ytterligare tekniskt material Further technical material 940915	Ytterligare tekniskt material Further technical material 940915	Ytterligare tekniskt material Further technical material 940915	Ytterligare tekniskt material Further technical material 940915	Ytterligare tekniskt material Further technical material 940915	Ytterligare tekniskt material Further technical material 940915	Ytterligare tekniskt material Further technical material 940915	Ytterligare tekniskt material Further technical material 940915
------------------------------------	--	---	--	--	---	---	---	---	---	---	---	---	---	---	---

10-13021 pump F8B-8

Multipurpose