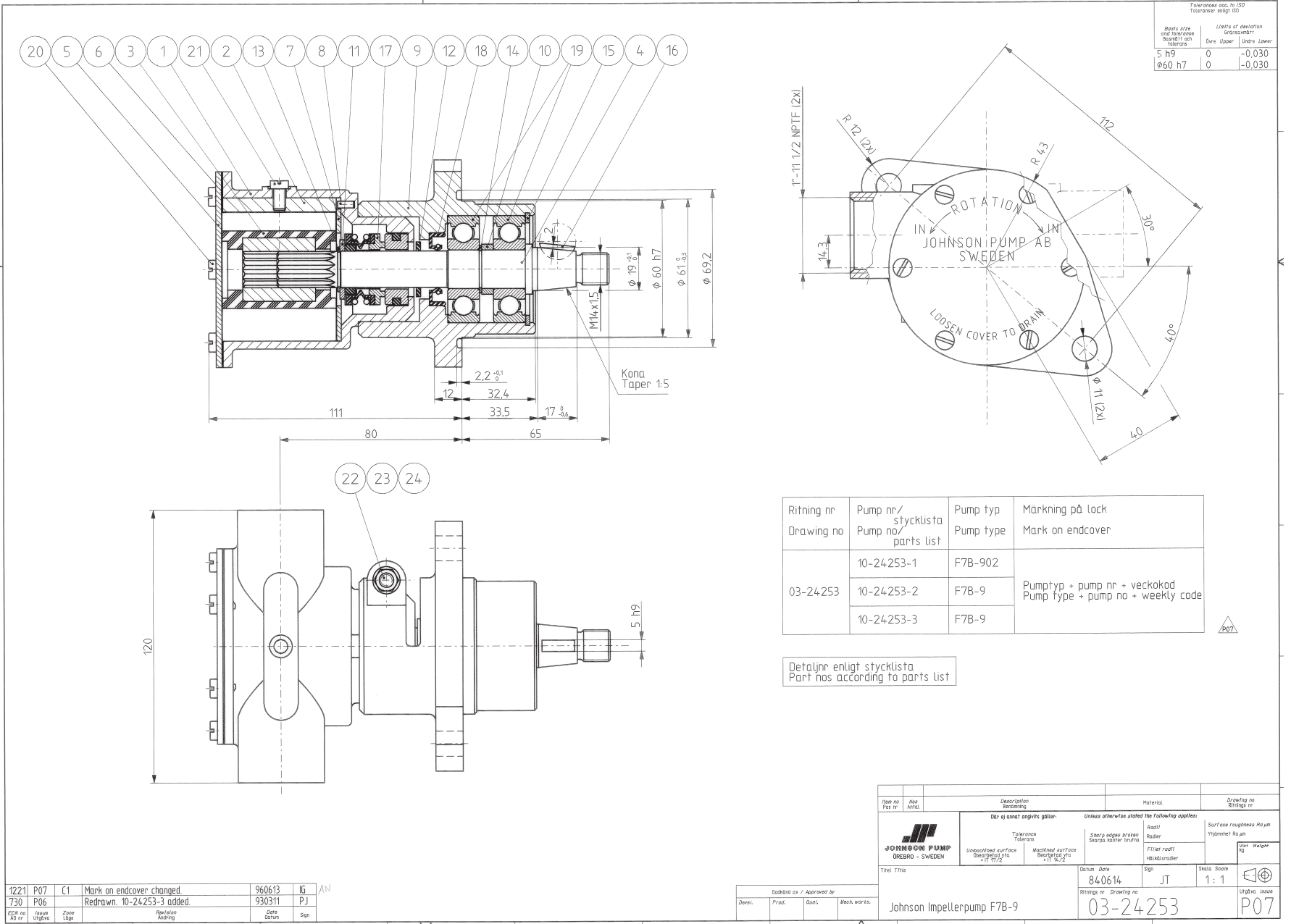


F7B-902 Impeller pump**Art. No. 10-24253-1**

Part. No.	Description Gb	Position	Quantity
01-21862-4	BODY F7B-	1	1
01-42584	CAM 1/2 F7B	2	1
08-1028B	IMPELLER	3	1
01-35220	SHAFT F7B-902	4	1
01-42441	ENDCOVER F7B-	5	1
01-42445	GASKET F4B/F7B-	6	1
01-42443	WEARPLATE F7B/F70B	7	1
01-42400	PIN F35B-/F7B/F70B	8	1
01-24254-2	BEARING HOUSING F7B-9	9	1
01-42537	SPACER F5/F7B-9	10	1
01-45174	WASHER F7B-3000/-5000	11	1
01-42402	SLINGER F5/F7B-	12	1
0.0370.516	EXT. CIRCLIP D16 DIN471 PHB	13	1
0.0370.017	EXT. CIRCLIP D17 DIN471 ST	14	1
0.0371.047	RETAIN. RING BORE D47 DIN472 SPRST	15	1
0.0503.032	WOODRUFKEY 5X6.5X16 DIN6888 ST	16	1
0.2247.050	MECH.SEAL COMPL 5/8" 106BT2C1	17	1
0.2233.017	LIP SEAL 16X32X7 DPSM	18	1
0.3431.523	BALL BEARING 6303 ST	19	2
01-46794-05	SCREW 10-32UNFX8 BRASS	20	6
01-46794-06	SCREW 12-24UNCX6.5 BRASS	21	1
0.0144.001	BOLT 1/4"-20UNCX57 SS1943 STZN	22	1
0.0353.402	WASHER D6,5 X D11,8 X1,6	23	1
0.0194.001	NUT 1/4"-20UNC SS1989 8.8ZN	24	1



10-24253

pump F7B-9