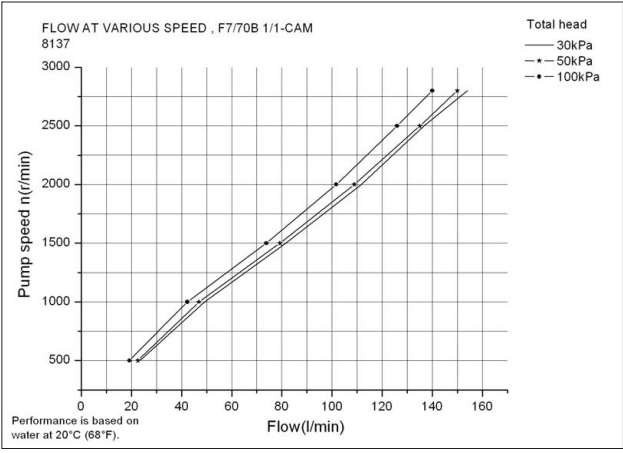
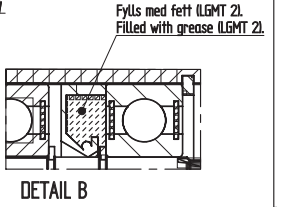
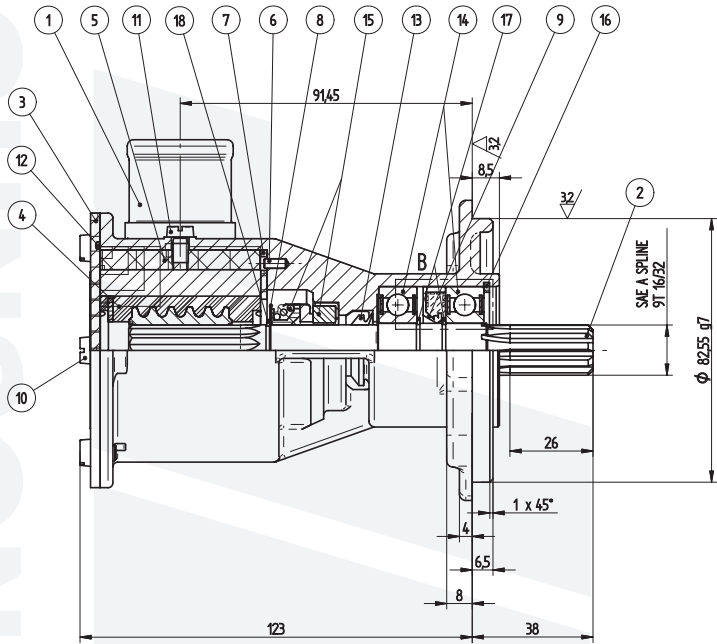
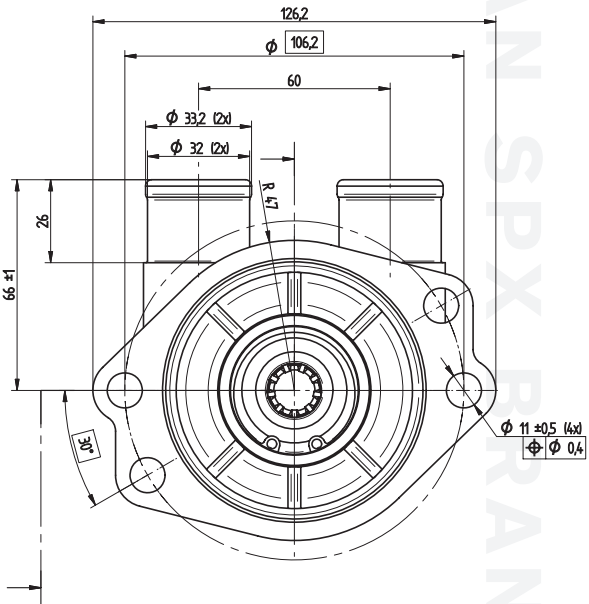


F7B-9 Impeller pump**Art. No. 10-24753-01**

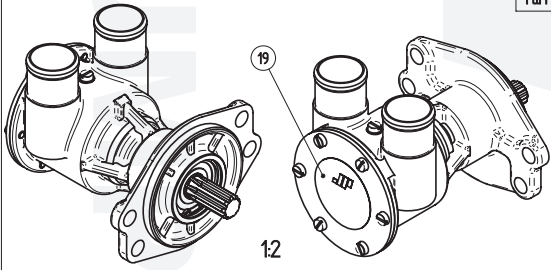
Part. No.	Description GB	Position	Quantity
01-13367-1	PUMP BODY F7B-9 JOHN DEERE	1	1
01-36141	SHAFT F7B-9 JOHN DEERE	2	1
01-46648-3	ENDCOVER F7B	3	1
08-1028B	IMPELLER	4	1
01-46899	CAM 1/1 F7B	5	1
01-42400	PIN F35B-/F7B/F70B	6	1
01-46798-2	WEAR PLATE F7B	7	1
01-45680	WASHER F5B/F6B/F7B	8	1
0.2233.403	LIP SEAL 17X40X7 NBR	9	1
0.0279.301	SCREW M5X8 ISO1207 A4	10	6
0.0279.033	SCREW M5X8 ISO1207 BRASS	11	1
0.2172.012	O-RING 63,22X1,78 NBR70	12	1
0.2230.015	V-RING 15.5-17.5 NBR/65SH	13	1
0.3431.742	BALL BEARING 6203 2 RS1 ST	14	2
0.2247.022	MECH.SEAL COMPL D16	15	1
0.0371.040	RETAIN. RING BORE D40 DIN472 SPRST	16	1
0.0370.017	EXT. CIRCLIP D17 DIN471 ST	17	2
0.0370.516	EXT. CIRCLIP D16 DIN471 PHB	18	1
01-46797	LABEL	19	1

Tolerances acc. to ISO			
Basic size and tolerance	Limits of deviation		
	Over	Upper	Under Lower
Ø82.55g7	-0.012	-0.047	



Ritning nr Drawing no	Pump nr/ stycklista Pump no/ parts list	Pump typ Pump type	Markning på lock Mark on endcover
03-24753	10-24753-01	F7B-9	Pumptyp + pump nr + tillv. år + vecka Pump type + pump no + man. year + week

Detailnr enligt stycklista
Part nos according to parts list



UNLESS OTHERWISE STATED THE FOLLOWING APPLIES OM EN ÖFRÖRE ANVÄNDE GÄLLER	DATE LÄRE 070509	PROJECT NUMBER PROJEKTNUMMER 2680	DESCRIPTION OF REVISION ÄNDRINGSBESKRIVNING	ISSUE NUMBER UTGÅVNUMMER
NON TOLERATED MÄTNED FÄSLES ALL TO ISO 2768 LÅG TOLERANSSTÄMPLA TYDOR ENKELT. ISO 2768 DIN 7168 : C	DESIGNED TE 070517	APPROVED TE 070517	STATUS	PROJECT NUMBER IN USE
SHARP EDGES BROKCHER SÅGSPÅN KANTER BROTTOR	WORK NUMBER	SCALE 1:1	TYPE PART/TP F7B-9	PROJECT NUMBER IN USE
FILLET RADI ÅRÅRÅRÅRÅRÅR	 JOHNSON PUMP AB P.O. BOX 1436 MÅSTIGATAN 13, SE-701 14 ÖREBRO, SWEDEN		JOHNSON Impellerpump F7B-9 03-24753 P01	