



# MARCH PUMPS

1819 PICKWICK AVE., GLENVIEW, IL 60026-1306, U.S.A  
 PHONE: (847) 729-5300 - FAX: (847) 729-7062  
 WWW.MARCHPUMP.COM

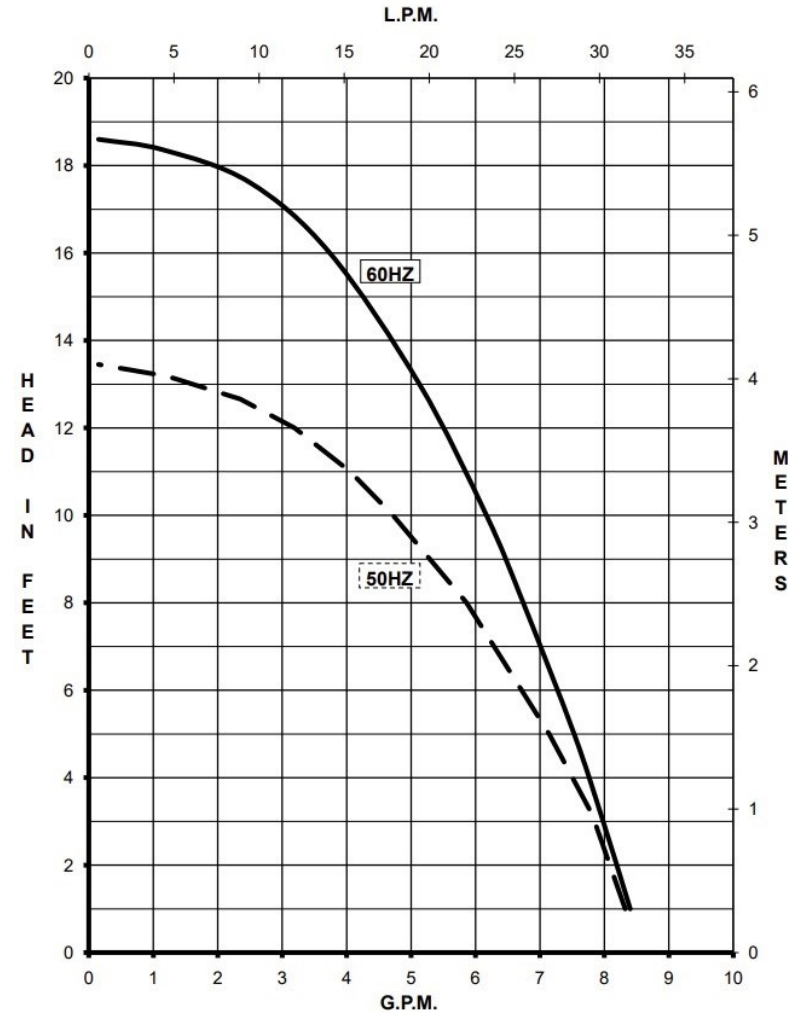
**DESCRIPTION & OPERATION:** 815 Center Inlet Series hot water booster centrifugal magnetic drive pumps are built to handle liquid transfer in heating and cooling operations. Contact the factory for application assistance. Pumps are not self-priming, lack a suction lift, and thus require a flooded suction. Pumps cannot be run dry.

**INSTALLATIONS:** Pumps should be installed with the pump housing arrow pointing in the direction of flow within the system. If the arrow indicating flow is not in the direction required, remove the housing screws holding the housing to the motor bracket and rotate the housing assembly as required. Replace the screws and tighten. The pump is composed of a wet end assembly which can be separated by unscrewing the housing screws. The pump will then separate into 2 parts. The liquid will be contained within the wet end assembly unless the rear housing screws on the rear housing are loosened.

**GENERAL SAFETY INFORMATION:** Follow all local safety codes & the Occupational Safety and Health Act (OSHA). Make certain that the power source conforms to the requirements of your equipment. Always disconnect power source before performing any work on or near the electric motor. Caution must be exercised to relieve any pressure in the system & in draining hot water from the pump or the system.

**ELECTRICAL:** Motors are available in different electrical configurations such as 115V 60 Hz or 230 Volt 50/60 Hz, 1 Phase. The motors are U.L. listed and rated for continuous duty. The 115V has a 6 foot cord and plug, the 230V has a 3 foot cord.

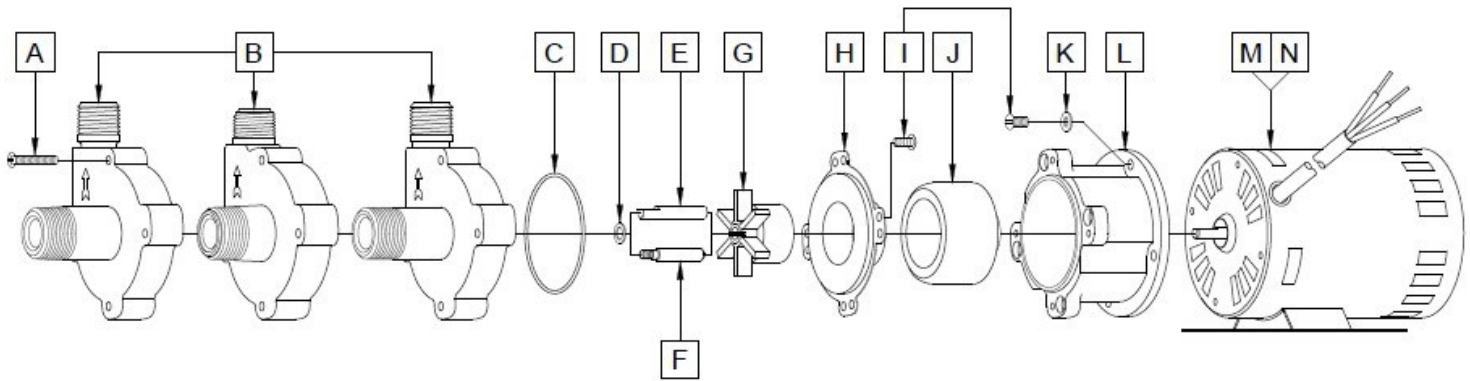
## 815 Center Inlet



Specifications		815-BR-C	815-PL-C	815-SS-C
Product	115V	0809-0017-0400	0809-0188-0100	0809-0198-0100
	230V	0809-0017-0500	0809-0188-0200	0809-0198-0200
Inlet-Outlet		3/4" MPT-1/2" MPT	3/8" FPT & 3/4" MPT-1/2" MPT	3/4" MPT-1/2" MPT
Max Internal Pressure		150PSI (1034 kPa)	50PSI (344 kPa)	150PSI (1034 kPa)
Max Liquid Temperature		250F (121C)	250F (121C)	250F (121C)

Model	60Hz											50Hz											Packed Pounds
	Max Flow		Max Head			Electrical						Max Flow		Max Head			Electrical						
	GPM	LPM	FT	PSI	M	Ph	V	A	HP	kW	RPM	GPM	LPM	Feet	PSI	M	Ph	V	A	HP	kW	RPM	
815-BR-C	8	30.3	18.6	8	5.7	1	115 or 230	0.5 or 0.3	1/25	0.029	3450	7.9	30	13.5	5.8	4.1	1	115 or 230	.04 or 0.3	1/25	0.029	2850	6
815-PL-C	8	30.3	18.6	8	5.7	1	115 or 230	0.5 or 0.3	1/25	0.029	3450	7.9	30	13.5	5.8	4.1	1	115 or 230	.04 or 0.3	1/25	0.029	2850	5
815-SS-C	8	30.3	18.6	8	5.7	1	115 or 230	0.5 or 0.3	1/25	0.029	3450	7.9	30	13.5	5.8	4.1	1	115 or 230	.04 or 0.3	1/25	0.029	2850	6

All specifications & data are based on pumping water & are intended as a guideline only. Specifications may vary with different motors.



815-BR-C				815-PL-C			
Item	Part Number	QTY REQ	Description	Item	Part Number	QTY REQ	Description
A	0923-0003-1000	4	#8-32 x 1 Lg. Screw (Steel)	A	0923-0003-1000	4	#8-32 x 1 Lg. Screw (Steel)
B	0809-0142-0000	1	Pump Housing (Bronze)	B	0809-0179-0100	1	Pump Housing (Polysulfone)
C	0809-0165-1000	1	0.070 CS x 2.441 ID O-Ring (Silicone)	C	0809-0027-1000	1	1/16 CS x 2-3/8 ID O-Ring (Silicone)
D	0809-0043-1000	1	Thrust Washer (Teflon)	D	0809-0043-1000	1	Thrust Washer (Teflon)
F	0809-0214-1000	1	Left-Hand Thread (Stainless Steel)	E	0809-0161-1000	1	"D" Flat Shaft (Stainless Steel)
G	0809-0107-0200	1	2-5/32" Impeller (Ryton/Teflon/Glass)	G	0809-0107-0200	1	2-5/32" Impeller (Ryton/Teflon/Glass)
H	0809-0012-1000	1	Rear Housing (Stainless)	H	0809-0012-1000	1	Rear Housing (Stainless)
I	0135-0040-1000	8	#8-32 x 3/8Lg. Screw (Stainless)	I	0135-0040-1000	8	#8-32 x 3/8Lg. Screw (Stainless)
J	0125-0083-0100	1	Drive Magnet	J	0125-0083-0100	1	Drive Magnet
K	0858-0004-1000	4	#8 Washer (Stainless)	K	0858-0004-1000	4	#8 Washer (Stainless)
L	0809-0058-1000	1	Motor Bracket (Plastic)	L	0809-0058-1000	1	Motor Bracket (Plastic)
M	0809-0218-1000	1	Motor 115V, 50/60Hz, 6 foot cord and plug	M	0809-0218-1000	1	Motor 115V, 50/60Hz, 6 foot cord and plug
N	0809-0124-1000	1	Motor 230V, 50/60Hz, 3 foot cord	N	0809-0124-1000	1	Motor 230V, 50/60Hz, 3 foot cord
<b>815-SS-C</b>				<p><b>LUBRICATION:</b> The motor should be oiled at least once a year at the start of the heating season with 4 or 5 drops of SAE 20 weight non-detergent oil in each bearing. If the pump is used daily, it should be oiled every six months. Do not over oil.</p> <p><b>DISASSEMBLY &amp; REASSEMBLY:</b> The motor can be removed from the wet end assembly without draining the liquid from the system. To do so remove four housing screws and slide the motor assembly away. If parts inside the wet end assembly must be removed, isolate the pump or drain the system. When the system is drained and cool, remove the four screws from the rear of the housing. The rear housing can now be removed. Remaining pump parts can be removed. Replace any worn or damaged parts. Replace the O-ring anytime the rear housing is removed.</p> <p><b>Materials in contact with the liquid:</b></p> <p><b>815-BR-C:</b> Bronze, Stainless Steel, Ryton/Teflon/Carbon, Silicone, Teflon</p> <p><b>815-PL-C:</b> Polysulfone, Stainless Steel, Ryton/Teflon/Carbon, Silicone, Teflon</p> <p><b>815-SS-C:</b> Stainless Steel, Ryton/Teflon/Carbon, Silicone, Teflon</p>			
A	0809-0205-1000	4	#8-32 x 1 Lg. Screw (Stainless)				
B	0809-0150-0010	1	Pump Housing (Stainless Steel)				
C	0809-0165-1000	1	0.070 CS x 2.441 ID O-Ring (Silicone)				
D	0809-0043-1000	1	Thrust Washer (Teflon)				
F	0809-0214-1000	1	Left-Hand Thread (Stainless Steel)				
G	0809-0107-0200	1	2-5/32" Impeller (Ryton/Teflon/Glass)				
H	0809-0012-1000	1	Rear Housing (Stainless)				
I	0135-0040-1000	8	#8-32 x 3/8Lg. Screw (Stainless)				
J	0125-0083-0100	1	Drive Magnet				
K	0858-0004-1000	4	#8 Washer (Stainless)				
L	0809-0058-1000	1	Motor Bracket (Plastic)				
M	0809-0218-1000	1	Motor 115V, 50/60Hz, 6 foot cord and plug				
N	0809-0124-1000	1	Motor 230V, 50/60Hz, 3 foot cord				
NOTE: Contact Factory for other materials and/or parts not listed.				Special voltage motors are available upon special order.			
<p><b>LIMITED WARRANTY:</b> March pumps are guaranteed only against defects in workmanship or materials for a period of one year from date of manufacture pumping water. For the complete warranty and to register online go to <a href="http://www.marchpump.com/warranty-registration">www.marchpump.com/warranty-registration</a></p>							