



# MARCH PUMPS

1819 PICKWICK AVE., GLENVIEW, IL 60026-1306, U.S.A  
 PHONE: (847) 729-5300 - FAX: (847) 729-7062  
 WWW.MARCHPUMP.COM

## BEER PUMPS 815 Series

### DESCRIPTION:

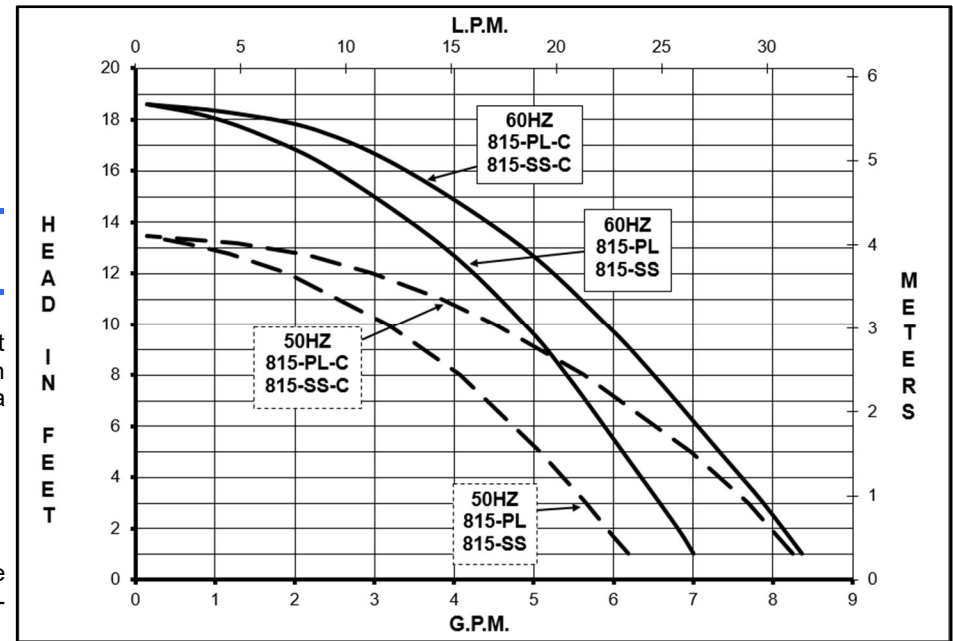
The March beer pump is a non-self-priming magnetic drive unit built specifically to handle hot wort and water. The unit requires liquid being pumped to lubricate the internal parts. If the pump is run dry for a period of time the impeller and shaft may become damaged. To regulate the flow use a valve on the discharge/outlet.

### ELECTRICAL:

All models have an air cooled 1 phase motor and have a 6 foot cord with plug.

### LIMITED WARRANTY:

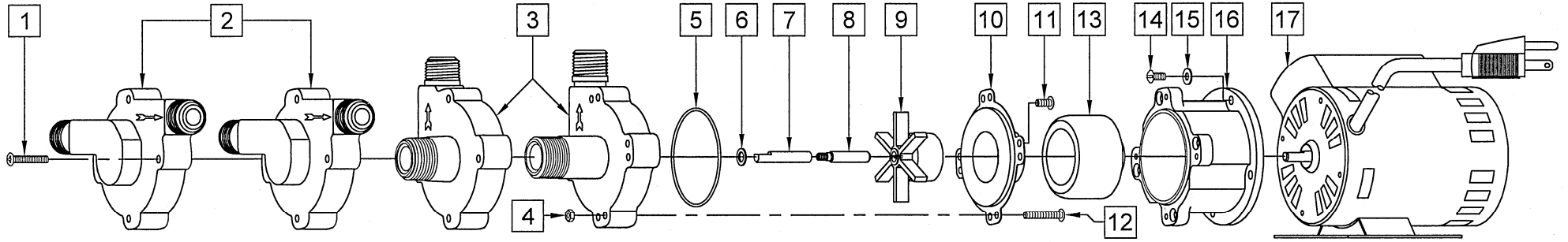
March pumps are guaranteed only against defects in workmanship or materials for a period of one year from date of manufacture pumping water. Register online at [www.marchpump.com/warranty-registration](http://www.marchpump.com/warranty-registration)



SPECIFICATIONS	815-PL-C			815-SS-C			815-PL			815-SS		
	Product #	115 V 0809-0188-0100			0809-0198-0100			0809-0196-0600			0809-0196-0700	
	Polysulfone, Center Inlet			Stainless, Center Inlet			Polysulfone, Inline			Stainless, Inline		
<b>UNITS</b>	<b>60 Hz</b>	<b>50 Hz</b>		<b>60 Hz</b>	<b>50 Hz</b>		<b>60 Hz</b>	<b>50 Hz</b>		<b>60 Hz</b>	<b>50 Hz</b>	
Max Flow	8 gpm	30 lpm		8 gpm	30 lpm		7 gpm	22.7 lpm		7 gpm	22.7 lpm	
Max Head	18.6 ft. / 8.05 psi	4.1 m		18.6 ft. / 8.05 psi	4.1 m		18.6 ft. / 8.05 psi	4.1 m		18.6 ft. / 8.05 psi	4.1 m	
Inlet	3/8" FPT & 3/4" MPT			3/4" MPT			1/2" MPT			1/2" MPT		
Outlet	1/2" MPT			1/2" MPT			1/2" MPT			1/2" MPT		
Max Internal Pressure	50 psi / 3.4 bar			150 psi / 10 bar			50 psi / 3.4 bar			150 psi / 10 bar		
Max Liquid Temperature	250 °F / 121 °C			250 °F / 121 °C			250 °F / 121 °C			250 °F / 121 °C		
Packed Weight	5 lbs / 2.3 kg			6 lbs / 2.7 kg			5 lbs / 2.3 kg			6 lbs / 2.7 kg		
<b>ELECTRICAL 60 Hz</b>	<b>A</b>	<b>Hp</b>	<b>Rpm</b>	<b>A</b>	<b>Hp</b>	<b>Rpm</b>	<b>A</b>	<b>Hp</b>	<b>Rpm</b>	<b>A</b>	<b>Hp</b>	<b>Rpm</b>
115 V	.5	1/25	3450	.5	1/25	3450	.5	1/25	3450	.5	1/25	3450
<b>ELECTRICAL 50 Hz</b>	<b>A</b>	<b>kW</b>	<b>Rpm</b>	<b>A</b>	<b>kW</b>	<b>Rpm</b>	<b>A</b>	<b>kW</b>	<b>Rpm</b>	<b>A</b>	<b>kW</b>	<b>Rpm</b>
115 V	.4	0.022	2850	.4	0.022	2850	.4	0.022	2850	.4	0.022	2850
<b>Overall Pump Size</b>	<b>Height</b>	<b>Width</b>	<b>Length</b>	<b>Height</b>	<b>Width</b>	<b>Length</b>	<b>Height</b>	<b>Width</b>	<b>Length</b>	<b>Height</b>	<b>Width</b>	<b>Length</b>
Inches	4.38	4.18	8.25	4.50	4.18	8.69	4.37	4.88	7.55	4.37	4.88	7.57
cm	11.1	10.6	20.9	11.4	10.6	22.0	11.0	12.3	19.1	11.0	12.3	19.1

All specifications & data are based on pumping water & are intended as a guideline only. Specifications may vary with different motors.

**PARTS LIST**



#	DESCRIPTION	MATERIAL		SIZE (Inches)	QTY.	PART #	
		815-SS-C	815-SS			815-SS-C	815-SS
1	Screw	Stainless	Stainless	#8-32 x 1 Lg.	4	0809-0205-1000	0809-0205-1000
2	Pump Housing (Inline)		Stainless	Inline Inlet & Outlet	1		0809-0211-0010
3	Pump Housing (Center Inlet)	Stainless		Center Inlet	1	0809-0150-0010	
4	Hex Nut		Stainless	#8-32	4	0991-0004-1000	
5	"O" Ring		Silicone	0.070 CS x 2.441 ID	1	0809-0165-1000	0809-0165-1000
6	Thrust Washer		Teflon		1		0809-0043-1000
8	*Shaft		Stainless	Left-Hand Thread	1	0809-0214-1000	0809-0214-1000
9	Impeller		Ryton/Teflon/Glass	2-5/32 Dia.	1		0809-0107-0200
10	Rear Housing		Stainless		1		0809-0012-1000
11	Screw		Stainless	#8-32 x 3/8 Lg.	4		0135-0040-1000
12	Screw		Stainless	#8-32 x 1 Lg.	4	0809-0205-1000	
13	Drive Magnet				1		0125-0083-0100
14	Screw		Stainless	#8-32 x 3/8 Lg.	4		0135-0040-1000
15	Washer		Stainless		4		0858-0004-1000
16	Motor Bracket		Plastic		1		0809-0058-1000
17	Motor 115 V, 50/60 Hz w/base			6 foot cord w/plug	1		0809-0218-1000

#	DESCRIPTION	MATERIAL		SIZE (Inches)	QTY.	PART #	
		815-PL-C	815-PL			815-PL-C	815-PL
1	Screw	Steel	Steel	#8-32 x 1 Lg.	4	0923-0003-1000	0923-0003-1000
2	Pump Housing (Inline)		Polysulfone	Inline Inlet & Outlet	1		0809-0079-0100
3	Pump Housing (Center Inlet)	Polysulfone		Center Inlet	1	0809-0179-0100	
5	"O" Ring		Silicone	1/16 CS x 2-3/8 ID	1		0809-0027-1000
6	Thrust Washer		Teflon		1		0809-0043-1000
7	*Shaft		Stainless	"D" Flat	1		0809-0161-1000
9	Impeller		Ryton/Teflon/Glass	2-5/32 Dia.	1		0809-0107-0200
10	Rear Housing		Stainless		1		0809-0012-1000
11	Screw		Stainless	#8-32 x 3/8 Lg.	4		0135-0040-1000
13	Drive Magnet				1		0125-0083-0100
14	Screw		Stainless	#8-32 x 3/8 Lg.	4		0135-0040-1000
15	Washer		Stainless		4		0858-0004-1000
16	Motor Bracket		Plastic		1		0809-0058-1000
17	Motor 115 V, 50/60 Hz w/base			6 foot cord w/plug	1		0809-0218-1000

NOTE: Contact Factory for other materials and/or parts not listed.

0750-0976-1000 R10

\*Check shaft type before ordering replacement parts.