



# MARCH PUMPS 893 BRUSHLESS

1819 PICKWICK AVE., GLENVIEW, IL 60026-1306, U.S.A  
 PHONE: (847) 729-5300 - FAX: (847) 729-7062  
 WWW.MARCHPUMP.COM

Paragon Motor w/Voltage Protection  
 893-11 & 893-12

Series 893 are centrifugal magnetic drive pumps, eliminating the need for a shaft seal.

A **flooded suction** is essential for operation since the pump is not self-priming. Pumps **cannot be run dry** because the impeller requires the liquid being pumped for lubrication. For application assistance, contact March Pump.

### ELECTRICAL:

The Brushless Motors have voltage protection. Red lead is positive, black lead is negative.

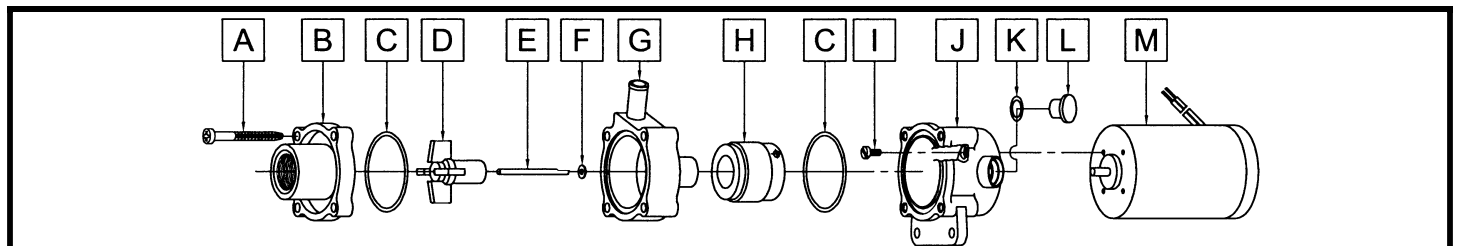
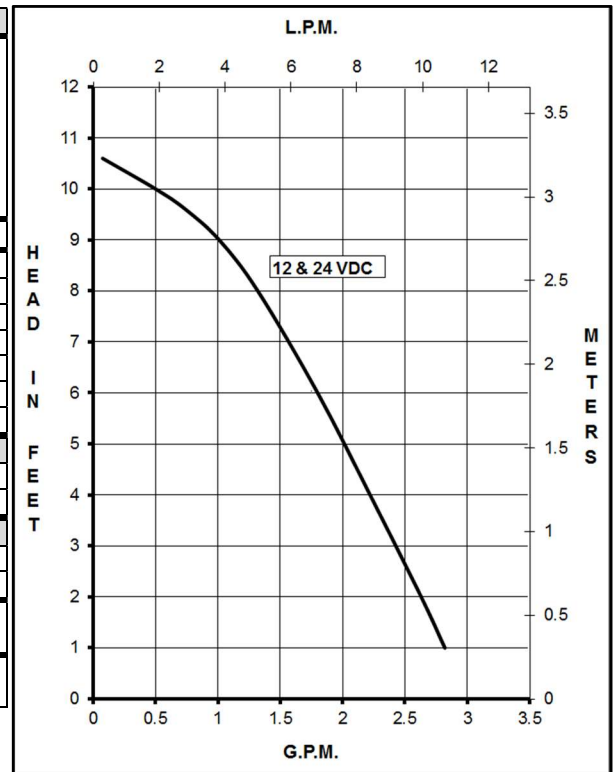
Model 893-11 (12 VDC) starts at 5.5 V ± 0.5 V and turns off at 17.5 V ± 0.5 V.

Model 893-12 (24 VDC) starts at 8.5 V ± 0.5 V and turns off at 28 V ± 0.5 V.

### LIMITED WARRANTY:

March pumps are guaranteed only against defects in workmanship or materials for a period of one year from date of manufacture pumping water. For the complete warranty and to register online go to [www.marchpump.com/warranty-registration](http://www.marchpump.com/warranty-registration)

SPECIFICATIONS	893-11 (12 VDC)					893-12 (24 VDC)				
Product #	0893-0067-0100					0893-0068-0100				
Max Flow	2.7 gpm - 11 lpm					2.7 gpm - 11 lpm				
Max Head	10.6 ft / 4.5 psi - 3.3 m					10.6 ft / 4.5 psi - 3.3 m				
Inlet - Outlet	3/8" FPT - 3/8" OD					3/8" FPT - 3/8" OD				
Max Internal Pressure	50 psi - 344 kPa					50 psi - 344 kPa				
Max Liquid Temperature	190 °F (87 °C)					190 °F (87 °C)				
Packed Weight	1.0 lbs / 0.45 kg					1.0 lbs / 0.45 kg				
Motor Leads	19"-20" (51 cm)					19"-20" (51 cm)				
<b>ELECTRICAL</b>	<b>A</b>	<b>W</b>	<b>Hp</b>	<b>kW</b>	<b>Rpm</b>	<b>A</b>	<b>W</b>	<b>Hp</b>	<b>kW</b>	<b>Rpm</b>
12 V	.85	10	1/150	0.004	4000					
24 V						0.5	12	1/150	0.004	4000
<b>Overall Size</b>	<b>Height</b>	<b>Width</b>	<b>Length</b>	<b>Height</b>	<b>Width</b>	<b>Length</b>	<b>Height</b>	<b>Width</b>	<b>Length</b>	<b>Height</b>
	2.96"	1.85"	5.25"	2.96"	1.85"	5.25"	7.5 cm	4.6 cm	13.3 cm	7.5 cm
<b>Materials in Contact With Solution</b>	Noryl, Polypropylene, Carbon/Teflon, Buna N, 316 Stainless Steel									
All specifications & data are based on pumping water & are intended as a guideline only. Specifications may vary with different motors.										



#	893-11 (12 VDC)			#	893-12 (24 VDC)		
A	0115-0062-1000	4	#7-19 x 1-7/16" Lg. Self-Tapping Screws (Stainless)	A	0115-0062-1000	4	#7-19 x 1-7/16" Lg. Self-Tapping Screws (Stainless)
B	0893-0004-1000	1	3/8" FPT Inlet Cover (Noryl)	B	0893-0004-1000	1	3/8" FPT Inlet Cover (Noryl)
C	0115-0018-1000	2	1/16" CS x 1-7/16" OD "O" Ring (Buna N)	C	0115-0018-1000	2	1/16" CS x 1-7/16" OD "O" Ring (Buna N)
D	0115-0119-1000	1	Encapsulated Impeller (Polypropylene)	D	0115-0119-1000	1	Encapsulated Impeller (Polypropylene)
E	0115-0032-1000	1	Shaft (316 Stainless)	E	0115-0032-1000	1	Shaft (316 Stainless)
F	0115-0033-1000	1	Rear Thrust Washer (Carbon/Teflon)	F	0115-0033-1000	1	Rear Thrust Washer (Carbon/Teflon)
G	0893-0003-1000	1	3/8" OD Outlet Rear Housing (Noryl)	G	0893-0003-1000	1	3/8" OD Outlet Rear Housing (Noryl)
H	0115-0101-0100	1	Drive Magnet	H	0115-0101-0100	1	Drive Magnet
I	0893-0066-1000	4	#4-40 x 0.147" Lg. Screws (Stainless)	I	0893-0066-1000	4	#4-40 x 0.147" Lg. Screws (Stainless)
J	0893-0065-0000	1	Motor Bracket (Plastic)	J	0893-0065-0000	1	Motor Bracket (Plastic)
K	0210-0008-1000	1	1/16" CS x 7/16" OD "O" Ring (Viton)	K	0210-0008-1000	1	1/16" CS x 7/16" OD "O" Ring (Viton)
L	0125-0110-1000	1	Plug (Plastic)	L	0125-0110-1000	1	Plug (Plastic)
M	0893-0062-1000	1	Motor (Paragon) 12 VDC Brushless	M	0893-0063-1000	1	Motor (Paragon) 24 VDC Brushless

NOTE: Contact Factory for other materials and/or parts not listed.

0893-0037-1200