



MARCH PUMPS

1819 PICKWICK AVE., GLENVIEW, IL 60026-1306, U.S.A
 PHONE: (847) 729-5300 - FAX: (847) 729-7062
 WWW.MARCHPUMP.COM

INSTRUCTIONS & REPAIR PARTS FOR

U.L. LISTED MODEL AB-2F CONDENSATE DISPOSAL PUMP



LISTED 734L
 CIRCULATING PUMP

AB-2F RATINGS & SPECIFICATIONS (60HZ)

MOTOR SPECS.					GALLONS PER HOUR (Rating based on using 1/4" I.D. Tubing)				MAX HEAD IN FT.	MAX P.S.I.	OUTLET PORT	PACKED WEIGHT
VOLTS	AMPS	WATTS	H.P.	R.P.M.	1 FT.	5 FT.	10 FT.	15 FT.				
115 60HZ	1.0	55	1/40	3300	75	55	29	7	17	7.4	1/4 F.P.T.	6 lbs.
230 60HZ	.65											

LOCATION: Model AB-2F pump is designed to mount BELOW the evaporator pan. It is preferable to mount pump as close to drip pan drain as possible to minimize actual lift and to clear components usually found on floor of most A.C. units. Pump is designed to mount on side of A.C. unit, or on wall near unit by using the two ears on each end of the red plastic sump.

PIPING: The Condensate Pump Inlet is a 1" diameter hole in the rubber grommet in the top metal plate. Attach a 1" O.D. rubber or plastic tube to the evaporator drip pan drain connection and lead it down into the pump inlet hole. Make sure the drain line is not kinked or collapsed due to sharp bends.

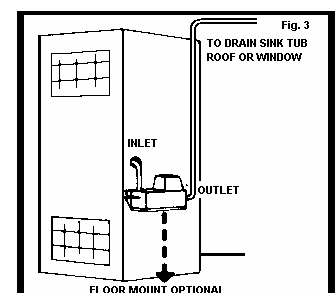
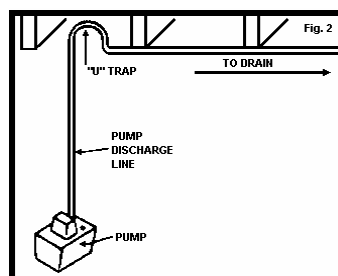
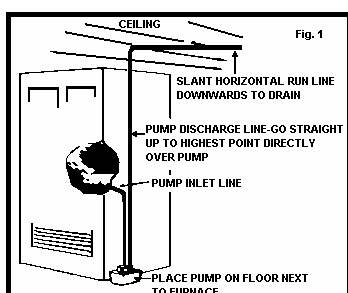
The Outlet fitting is a 90 degree angle tube fitting to which you attach the 1/4" I.D. plastic tubing. It is important to go straight up from the pump to the highest vertical point and then run the horizontal line to the drain. All horizontal lines should be slanted slightly downwards toward the drain or disposal area in order to prevent line drain-back into the pump after it goes off (See Figure 1). If impractical to slant the horizontal run, make an inverted "U" trap directly over the pump at the highest point to prevent back-siphoning (See Figure 2). The slight amount of drain-back from vertical column is not generally enough with 1/4" I.D. tubing to short-cycle the pump. Total maximum lift is 17 feet.

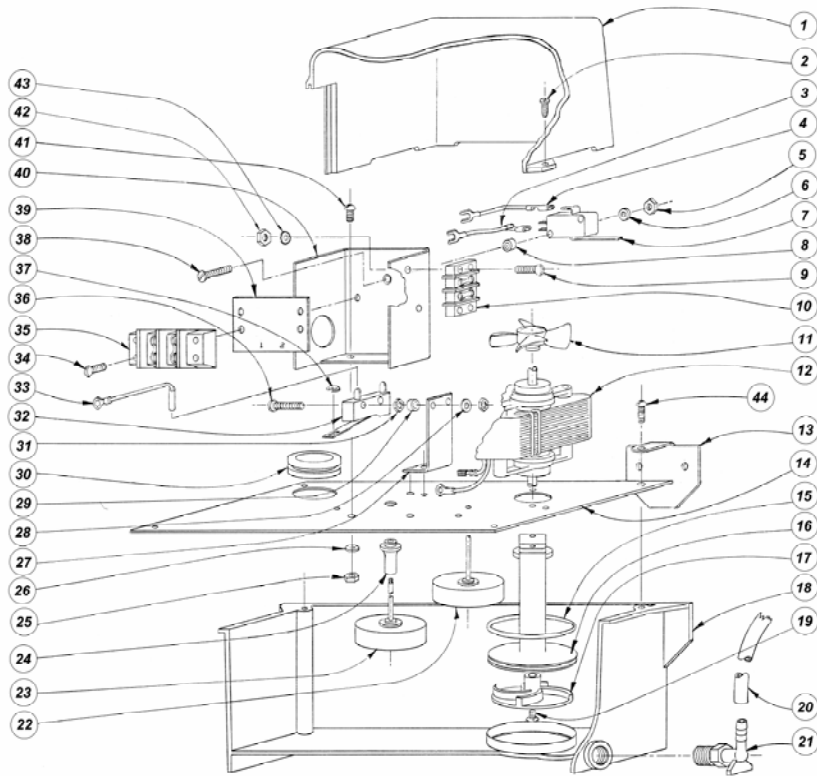
ELECTRICAL & OPERATION: Remove the 2 self-trapping screws holding down the Top Cover & lift the cover off. The AB-2F is equipped with a BX Bracket & two terminal boards. The small 2 station terminal board is for the 24V A.C. Safety Switch. The large 2 station terminal board is for the 115V or 230V A.C. Operating Switch. Attach rigid or flexible conduit to the BX bracket & wire the 115V or 230V A.C. board per the wiring diagram.

The 115V or 230V line current will operate the Motor-Pump-Operating Float Combination.- The safety switch must be connected to the 24V A.C. relay transformer to the A.C. Thermostat. If the Pump should fail to operate for any reason, the water will eventually trip the safety float & cause the A.C. unit to shut off. This will prevent additional water from collecting & overflowing the container. The 24 AC leads to the transformer need not be shielded in conduit. Run the leads under the cutout in the cover.

WARNING: Reduced risk of electric shock during operation of this pump requires the provision of acceptable grounding. If the means of connection to the supply-connection box is other than grounded metal conduit, ground the pump back to the service by connecting a copper conductor, at least the size of the circuit conductors supplying the pump, to the grounding screw provided within the wiring compartment. This pump has not been investigated for use in swimming pool or marine areas. Acceptable for indoor use only. Non submersible pump.

SERVICING AND MAINTANCE: Remove the 6 screws on each corner of the galvanized sump cover and lift the assembly out of the Red Sump container. Clean out all dirt accumulation on the parts. Check the float rods to be sure they work freely. Check the discharge fitting and tubing for any dirt accumulation. Place the sump cover back in place and screw down with 6 screws. Run the unit thru one cycle by pouring water into the container. Always replace the top cover.





MODEL AB-2F-U.L. PARTS LIST

ITEM	DESCRIPTION	QTY.	PART NO.	ITEM	DESCRIPTION	QTY.	PART NO.
1	PUMP COVER	1	0618-0082-1000	23	FLOAT ROD ASSEMBLY	1	0618-0010-0100
2	#6 SELF TAPPING SCREW	2	0620-0022-1000	24	FLOAT ROD GUIDE	1	0618-0006-1000
3	CONNECTING WIRE & TERMINAL ASSEMBLY	1	0618-0064-0100	25	#8-32 HEX NUT	9	0410-0039-1000
4	CONNECTING WIRE & TERMINAL ASSEMBLY	1	0618-0052-0100	26	#8 INT. TOOTH LOCKWASHER	9	0620-0010-1000
5	#4-40 HEX NUT	2	0618-0024-1000	27	SWITCH BRACKET	1	0618-0042-1000
6	#4 INT. TOOTH LOCKWASHER	2	0410-0034-1000	28	#2 INT. TOOTH LOCKEWASHER	2	0618-0055-1000
7	SAFETY SWITCH	1	0415-0026-1000	29	SWITCH SPACER	2	0618-0053-1000
8	SWITCH SPACER	2	0618-0020-1000	30	INLET GROMMET	1	0618-0017-1000
9	#6-32 X 1/2 LG. RND. HD. SCREW	2	0809-0122-1000	31	#2-56 HEX NUT	4	0618-0054-1000
10	2 TERMINAL STRIP	1	0618-0044-1000	32	SWITCH	1	0618-0043-1100
11	FAN C.W.	1	0210-0026-1000	33	CONNECTION WIRE & TERMINAL ASSEMBLY	1	0618-0049-0200
12a	MOTOR 115V 60HZ.	1	0618-0041-1000	34	#8-32 X 11/16" LG. RND. HD. SCREW	2	0618-0101-1000
12b	MOTOR 230V 50/60HZ	1	0618-0083-1000	35	2 TERMINAL STRIP	1	0618-0045-1000
13	MOUNTING SUPPORT	2	0618-0047-1000	36	#2-56 X 5/8" LG. RND. HD. SCREW	2	0618-0086-1000
14	PUMP MOUNTING PLATE	1	0618-0007-1000	37	FLOAT "E" RING	3	0410-0007-1000
15	"O" RING	1	0618-0031-1000	38	#4-40 X 3/4" LG. FLT. HD. SCREW	2	0618-0058-1000
16	PUMP CONNECTING BODY	1	0618-0014-1000	39	INSULATED PLATE	1	0618-0057-1000
17	IMPELLER	1	0618-0005-1000	40	TERMINALS & SWITCH MOUNTING PLATE	1	0618-0046-1000
18	PUMP BOTTOM CASE	1	0618-0003-1000	41	#8-32 X 3/8" LG. RND. HD. SCREW	5	0135-0040-1000
19	#4-40 X 5/16 LG. FLAT HD. SCREW	1	0618-0025-1000	42	#6-32 HEX NUT	2	0455-0043-1000
20	1/4" I.D. X 20 FT. LG TUBING	1	0410-0024-1000	43	#6 LOCKWASHER	2	0455-0037-1000
21	90° ELBOW	1	0618-0033-1000	44	#8 X 1/2" LG. SELF TAP SCREW	6	0410-0078-1000
22	SAFTEY FLOAT ASSEMBLY	1	0618-0009-0100				

Contact factory for other materials and/or parts not listed.

LIMITED WARRANTY

March pumps are guaranteed only against defects in workmanship or materials for a period of one year from date of manufacture pumping water. See March limited warranty statement on card #0410-0104-1000 packed with this pump.



1819 PICKWICK AVE., GLENVIEW, IL 60026-1306, U.S.A
 PHONE: (847) 729-5300 · FAX: (847) 729-7062 · www.marchpump.com

0618-0063-1000 R9