



MARCH PUMPS

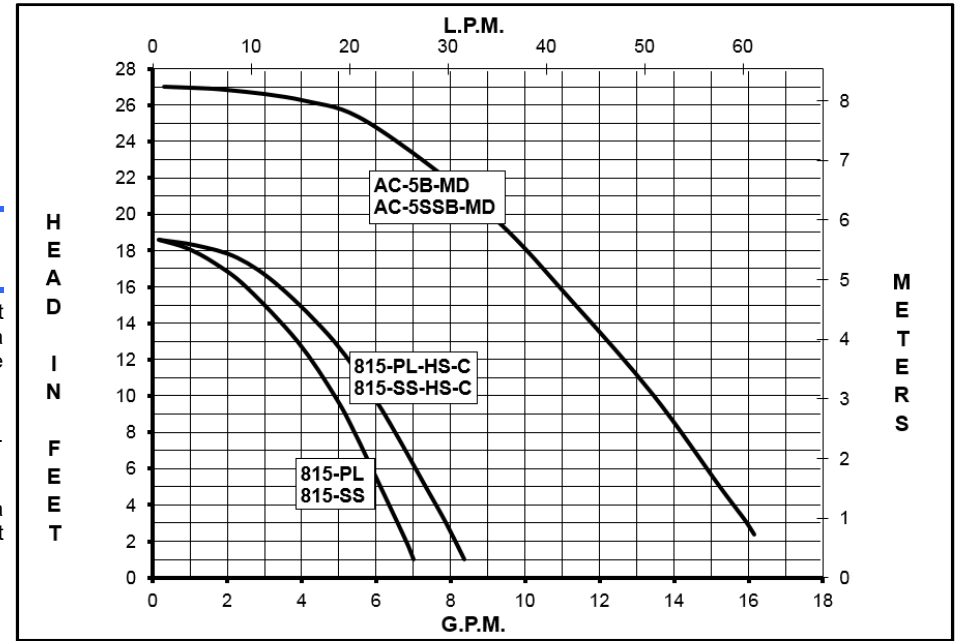
1819 PICKWICK AVE., GLENVIEW, IL 60026-1306, U.S.A
 PHONE: (847) 729-5300 - FAX: (847) 729-7062
 WWW.MARCHPUMP.COM

BEER PUMPS

DESCRIPTION: The March beer pump is a non-self-priming magnetic drive unit built specifically to handle hot wort and water. The unit requires liquid being pumped to lubricate the internal parts. If the pump is run dry for a period of time the impeller and shaft may become damaged. To regulate the flow use a valve on the discharge/outlet.

ELECTRICAL: All models have an air cooled 1 phase motor. AC-5B-MD & AC-5SSB-MD have a 3 ft. cord. 815 115 volt models have a 6 foot cord with plug.

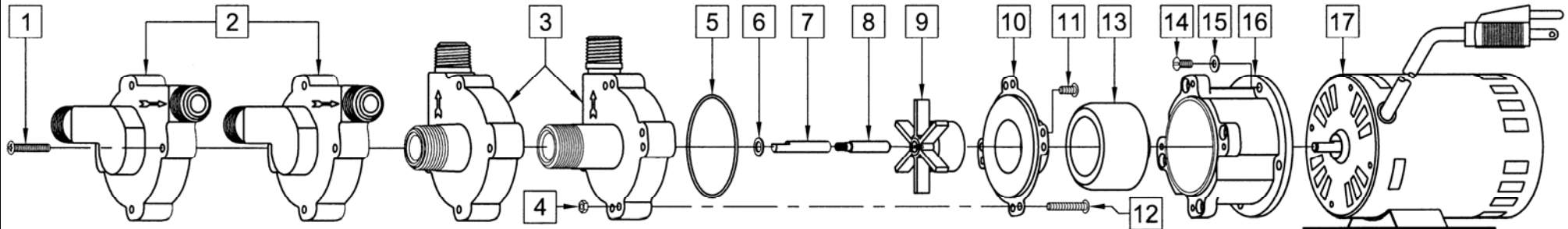
LIMITED WARRANTY: March pumps are guaranteed only against defects in workmanship or materials for a period of one year from date of manufacture pumping water. Register online at www.marchpump.com/warranty-registration



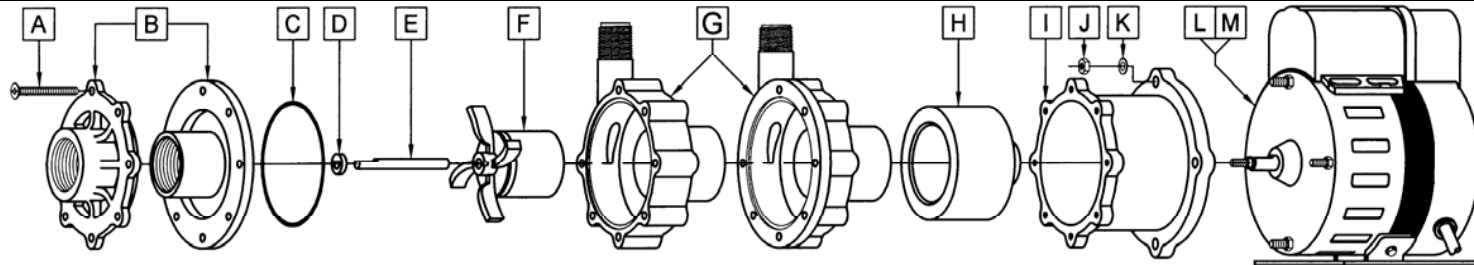
SPECIFICATIONS	815-PL-C				815-SS-C				815-PL				815-SS				AC-5B-MD				AC-5SSB-MD																																			
	Polysulfone, Center Inlet								Stainless, Center Inlet								Polysulfone, Inline								Stainless, Inline								Polysulfone								Stainless															
MODELS	815-PL-C								815-SS-C								815-PL								815-SS								AC-5B-MD								AC-5SSB-MD															
Product #	115 V / 230 V								0809-0196-0800								0809-0196-0900								0809-0196-0600								0809-0196-0700								0150-0202-0100								0150-0202-0200							
UNITS	60 Hz				50 Hz				60 Hz				50 Hz				60 Hz				50 Hz				60 Hz				50 Hz				60 Hz				50 Hz																			
Max Flow	8 gpm				30 lpm				8 gpm				30 lpm				7 gpm				22.7 lpm				7 gpm				22.7 lpm				17 gpm				60 lpm				17 gpm				60 lpm											
Max Head	18.6 ft. / 8.05 psi				4.1 m				18.6 ft. / 8.05 psi				4.1 m				18.6 ft. / 8.05 psi				4.1 m				18.6 ft. / 8.05 psi				4.1 m				27 ft. / 11.7 psi				6 m				27 ft. / 11.7 psi				6 m											
Inlet	3/8" FPT & 3/4" MPT								3/4" MPT								1/2" MPT								1/2" MPT								1" FPT								1" FPT															
Outlet	1/2" MPT								1/2" MPT								1/2" MPT								1/2" MPT								1/2" MPT								1/2" MPT															
Internal Pressure	50 psi / 3.4 bar Max								150 psi / 10 bar Max								50 psi / 3.4 bar Max								150 psi / 10 bar Max								50 psi / 3.4 bar Max								200 psi / 13 bar Max															
Liquid Temperature	250 °F / 121 °C Max								250 °F / 121 °C Max								250 °F / 121 °C Max								250 °F / 121 °C Max								250 °F / 121 °C Max								250 °F / 121 °C Max															
Packed Weight	5 lbs / 2.3 kg								6 lbs / 2.7 kg								5 lbs / 2.3 kg								6 lbs / 2.7 kg								9.5 lbs / 4.3 kg								12.5 lbs / 5.6 kg															
ELECTRICAL 60 Hz	W	A	Hp	Rpm	W	A	Hp	Rpm	W	A	Hp	Rpm	W	A	Hp	Rpm	W	A	Hp	Rpm	W	A	Hp	Rpm	W	A	Hp	Rpm	W	A	Hp	Rpm	W	A	Hp	Rpm																				
115 V	122	1.4	1/25	3450	122	1.4	1/25	3450	122	1.4	1/25	3450	122	1.4	1/25	3450	234	2.1	1/8	3450	234	2.1	1/8	3450	234	2.1	1/8	3450	234	2.1	1/8	3450	234	2.1	1/8	3450																				
230 V																																																								
ELECTRICAL 50 Hz	W	A	kW	Rpm	W	A	kW	Rpm	W	A	kW	Rpm	W	A	kW	Rpm	W	A	kW	Rpm	W	A	kW	Rpm	W	A	kW	Rpm	W	A	kW	Rpm	W	A	kW	Rpm																				
115 V	129	1.4	0.029	2850	129	1.4	0.029	2850	129	1.4	0.029	2850	129	1.4	0.029	2850	129	1.4	0.029	2850	129	1.4	0.029	2850	129	1.4	0.029	2850	129	1.4	0.029	2850	129	1.4	0.029	2850																				
230 V																																																								
Overall Pump Size	Height	Width	Length	Height	Width	Length	Height	Width	Length	Height	Width	Length	Height	Width	Length	Height	Width	Length	Height	Width	Length	Height	Width	Length	Height	Width	Length	Height	Width	Length	Height	Width	Length																							
Inches	4.37	3.50	8.43	4.50	3.50	8.62	3.62	4.88	7.75	4.87	3.33	7.74	6.19	4.52	9.27	6.19	4.52	9.27	6.19	4.52	9.27	6.19	4.52	9.27	6.19	4.52	9.27	6.19	4.52	9.27																										
cm	11.0	8.8	21.4	11.4	8.8	21.8	9.1	12.3	19.6	12.3	8.4	19.6	15.7	11.4	23.5	15.7	11.4	23.5	15.7	11.4	23.5	15.7	11.4	23.5	15.7	11.4	23.5																													

All specifications & data are based on pumping water & are intended as a guideline only. Specifications may vary with different motors.

PARTS LIST



#	DESCRIPTION	815-PL-C	815-SS-C	815-PL	815-SS	SIZE (Inches)	QTY.	815-PL-C	815-SS-C	815-PL	815-SS
1	Screw	Steel	Stainless	Steel	Stainless	#8-32 x 1 Lg.	4	0923-0003-1000	0809-0205-1000	0923-0003-1000	0809-0205-1000
2	Pump Housing (Inline)			Polysulfone	Stainless	Inline Inlet & Outlet	1			0809-0079-0100	0809-0211-0010
3	Pump Housing (Center Inlet)	Polysulfone	Stainless			Center Inlet	1	0809-0179-0100	0809-0150-0010		
4	Hex Nut		Stainless			#8-32	4		0991-0004-1000		
5	"O" Ring		Silicone			0.070 CS x 2.441 ID	1		0809-0165-1000		0809-0165-1000
6	Thrust Washer		Teflon				1		0809-0043-1000		
7	*Shaft		Stainless			"D" Flat	1	0809-0161-1000		0809-0161-1000	
8	*Shaft		Stainless			Left-Hand Thread	1		0809-0214-1000		0809-0214-1000
9	Impeller		Ryton/Teflon/Glass			2-5/32 Dia.	1		0809-0107-0200		
10	Rear Housing		Stainless				1		0809-0012-1000		
11	Screw		Stainless			#8-32 x 3/8 Lg.	4	0135-0040-1000		0135-0040-1000	0135-0040-1000
12	Screw		Stainless			#8-32 x 1 Lg.	4		0809-0205-1000		
13	Drive Magnet						1		0125-0083-0100		
14	Screw		Stainless			#8-32 x 3/8 Lg.	4		0135-0040-1000		
15	Washer		Stainless				4		0858-0004-1000		
16	Motor Bracket		Plastic				1		0809-0058-1000		
17	Motor 115V, 50/60Hz w/base					6 foot cord w/plug	1		0809-0196-1000		



#	DESCRIPTION	MATERIAL	SIZE (Inches)	QTY.	AC-5B-MD	AC-5SSB-MD	#	DESCRIPTION	MATERIAL	SIZE (Inches)	QTY.	AC-5B-MD	AC-5SSB-MD
A	Screw	Stainless	#8-32 x 1-3/4 Lg.	7	0150-0021-1000		G	Rear Housing	Polysulfone/Ceramic	w/Thrust Washer	1	0150-0203-0100	
B	Cover	Polysulfone		1	0150-0189-1000		H	Rear Housing	Stainless		1		0150-0110-0010
C	Cover	Stainless		1		0150-0111-0010	I	Drive Magnet	Plastic		1	0150-0081-0100	
D	"O" Ring	Buna-N		1	0750-0981-1000		J	Motor Bracket	Plastic		1	0150-0070-0100	0150-0126-0100
E	Thrust Washer	Ceramic		1	0130-0028-1000		K	Hex Nut	Stainless	#10-32	4	0625-0024-1000	
F	Shaft	Stainless		1	0939-0003-1000		L	Lock Washer	Stainless	#10 Internal Tooth	4	0802-0006-1000	
							M	Motor 115V, 50/60Hz w/base		3 foot cord	1	0150-0027-1000	
								Motor 230V, 50/60Hz w/base (Not Shown)		3 foot cord	1	0150-0040-1000	

NOTE: Contact Factory for other materials and/or parts not listed.

0750-0976-1000 R8

*Check shaft type before ordering replacement parts.