



MARCH PUMPS

1819 PICKWICK AVE., GLENVIEW, IL 60026-1306, U.S.A
 PHONE: (847) 729-5300 - FAX: (847) 729-7062
 WWW.MARCHPUMP.COM

DESCRIPTION: SP-TE-7-MD series are centrifugal magnetic drive pumps eliminating the need for a shaft seal. Pumps can be serviced with an adjustable wrench. See the parts list for a breakdown of parts.

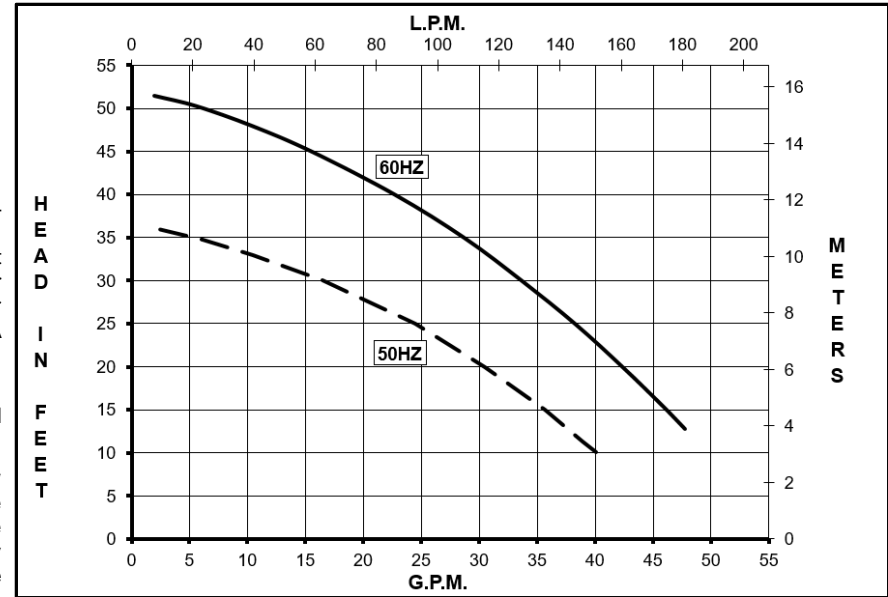
Model Abbreviations: SP: Self Priming, P: Polypropylene, K: Kynar

OPERATION: The housing container should be filled completely with liquid. The container holds approximately 1-3/4 gallons. After the container is full and the filler cap has been screwed tight, check all the connections for any leakage. Start the motor and continue to check for any leakage. The pump has the ability to pull up water a distance of 12 feet from the surface of your supply tank to the pump within one minute. If the unit does not self-prime, then check for leakage or for obstructions. Pumps **cannot be run dry** because the impeller requires the liquid being pumped for lubrication. The direction of the motor rotation should be counterclockwise when facing the motor end of the pump. A trimmed impeller may be necessary when pumping a liquid with a specific gravity or viscosity greater than water as well in cases of high liquid temperature. For application assistance, contact March Pump.

ELECTRICAL: Models are 115/230 V, 1 phase or 230/460 V, 3 phase, TEFC. Motors are totally enclosed fan cooled and are U.L. listed as well as rated for continuous operation. All motors have a conduit box for electrical connections.

DISASSEMBLY & REASSEMBLY: Drain all the liquid from the unit and flush with water. Examine the exploded view of the pump construction before starting to disassemble to become familiar with the unit. Loosen the hex nut on the "V" retainer clamp. Slide off the clamp. The housing container can now be removed. The front housing can now be pulled forward and removed. The impeller will slide off the shaft. Clean all the parts as necessary and replace any worn or damaged parts. Reassemble as shown in the exploded view. Make sure the "O" rings and thrust washer are in the proper position.

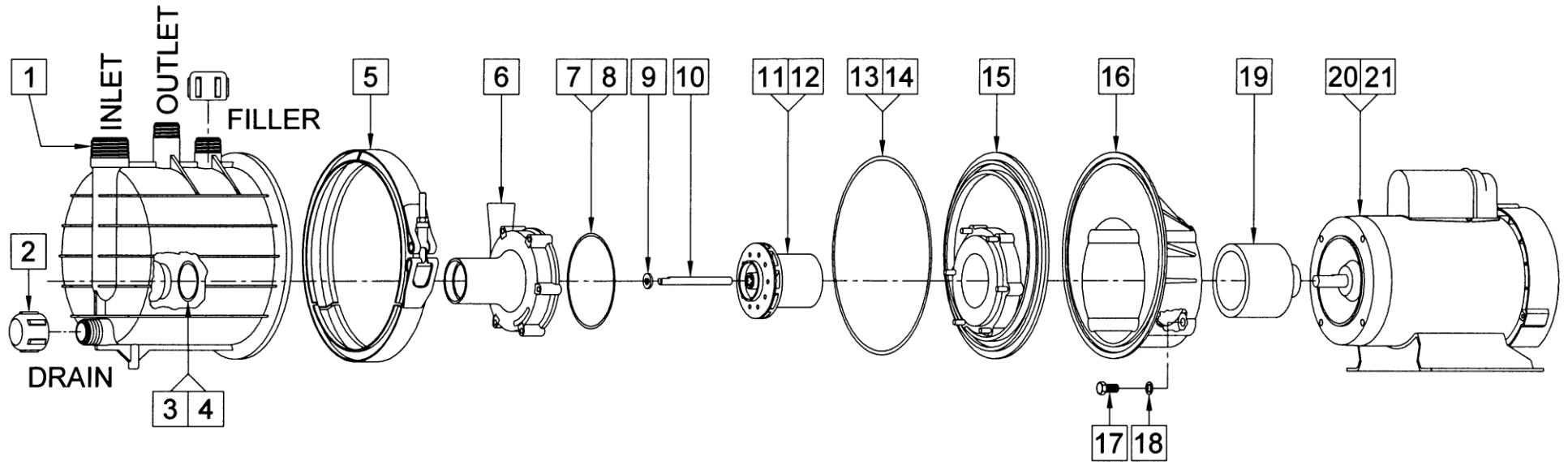
SP-TE-7P-MD, SP-TE-7K-MD



SPECIFICATIONS	SP-TE-7P-MD																SP-TE-7K-MD													
	Max Suction Lift:		12 Feet (3.6 Meters)																											
	Product #	1 Phase	0155-0187-0100														0155-0188-0100													
	3 Phase	0155-0187-0200														0155-0188-0200														
	Inlet - Outlet	1-1/2" MPT - 1" MPT																1-1/2" MPT - 1" MPT												
	Max Internal Pressure	40 psi (275 kPa)																40 psi (275 kPa)												
	Max Liquid Temperature	180 °F (82 °C)																180 °F (82 °C)												
MODEL	60 Hz										50 Hz										Height		Width		Length		Packed Weight			
	Max Flow	Max Head	ELECTRICAL							Max Flow	Max Head	ELECTRICAL							Inches	cm	Inches	cm	Inches	cm	lbs	kg				
SP-TE-7P-MD	gpm	lpm	ft	psi	m	Ph	V	A	Hp	kW	Rpm	gpm	lpm	ft	psi	m	Ph	V	A	Hp	kW	Rpm								
	53	201	52	22.5	15.8	1	115	11.8	1	0.746	3450	47.6	180	36	15.6	11	1	110	12.4	1	0.746	2850	12.53	31.8	11.21	28.4	24.12	61.2	57	26
SP-TE-7K-MD	53	201	52	22.5	15.8	3	230	3.0	1	0.746	3450	47.6	180	36	15.6	11	3	230	3.0	1	0.746	2850	12.53	31.8	11.21	28.4	24.12	61.2	50	23
							460	1.5										460	1.5											
SP-TE-7K-MD	53	201	52	22.5	15.8	1	115	11.8	1	0.746	3450	47.6	180	36	15.6	11	1	110	12.4	1	0.746	2850	12.53	31.8	11.21	28.4	24.12	61.2	57	26
	53	201	52	22.5	15.8	3	230	3.0	1	0.746	3450	47.6	180	36	15.6	11	3	230	3.0	1	0.746	2850	12.53	31.8	11.21	28.4	24.12	61.2	50	23
							460	1.5										460	1.5											

All specifications & data are based on pumping water & are intended as a guideline only. Specifications may vary with different motors.

PARTS LIST



#	DESCRIPTION	SP-TE-7P-MD	SP-TE-7K-MD	SIZE (Inches)	QTY.	SP-TE-7P-MD	SP-TE-7K-MD
1	Housing Container	Polypropylene	Kynar		1	0155-0177-1000	0155-0196-1000
2	Drain & Filler Cap	Polypropylene	Kynar		2	0155-0182-1000	0155-0197-1000
3	"O" Ring	Viton		1/8 CS x 2 OD	1	0155-0179-1000	
4	"O" Ring (Option)	Viton/Teflon		1/8 CS x 2 OD	1	0155-0214-1000	
5	V-Retainer Clamp	Stainless			1	0155-0183-1000	
6	Front Housing	Polypropylene	Kynar		1	0155-0175-1000	0155-0195-1000
7	"O" Ring	Viton		1/8 CS x 4-3/4 OD	1	0155-0180-1000	
8	"O" Ring (Option)	Viton/Teflon		1/8 CS x 4-3/4 OD	1	0155-0215-1000	
9	Thrust Washer	Ceramic			1	0155-0009-1000	
10	Shaft	Ceramic			1	0155-0039-1000	
11	Impeller w/Carbon Bushing	Polypropylene	Kynar		1	0155-0159-0200	0155-0160-0200
12	Impeller w/Mica Teflon Bushing (Option)	Polypropylene	Kynar		1	0155-0159-0400	0155-0160-0400
13	"O" Ring	Viton		3/16 CS x 9-7/8 OD	1	0155-0181-1000	
14	"O" Ring (Option)	Viton/Teflon		3/16 CS x 9-7/8 OD	1	0155-0216-1000	
15	Rear Housing w/Ceramic Thrust Washer	Polypropylene	Kynar		1	0155-0176-0100	0155-0194-0100
16	Motor Bracket	Plastic			1	0155-0178-1000	
17	Screw	Stainless		3/8-16 x 3/4 Lg.	4	0155-0017-1000	
18	Washer	Stainless		3/8 ID x 5/8 OD	4	0155-0019-1000	
19	Drive Magnet				1	0155-0130-0200	
20	Motor, TEFC, 1HP, 1 Phase, 115/230V, 50/60Hz				1	0155-0185-1000	
21	Motor, TEFC, 1HP, 3 Phase, 230/460V, 50/60Hz (Not Shown)				1	0155-0186-1000	

Materials in Contact With Solution:

SP-TE-7P-MD: Glass reinforced Polypropylene, Viton, Ceramic, Carbon | **SP-TE-7K-MD:** Kynar/Carbon Filled, Viton, Ceramic, Carbon

When replacing impeller bushing in the field: The plastic bushing must be bored to size after they have been pressed into the impeller. Bore to 0.378/0.381 I.D. The carbon and ceramic bushings are to finished size and do not require boring. When attaching drive magnet to the motor shaft, position the face of the drive magnet 49/64 inch above the face of the motor bracket. When reassembling "V" retainer clamp, tighten down to 100-inch pounds.

LIMITED WARRANTY: March pumps are guaranteed only against defects in workmanship or materials for a period of one year from date of manufacture pumping water. For the complete warranty and to register online go to www.marchpump.com/warranty-registration

NOTE: Contact Factory for other materials and/or parts not listed.

0155-0198-1000 R13