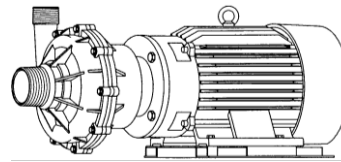




# MARCH PUMPS

1819 PICKWICK AVE., GLENVIEW, IL 60026-1306, U.S.A  
 PHONE: (847) 729-5300 - FAX: (847) 729-7062  
 WWW.MARCHPUMP.COM



## TE-10K-MD

**DESCRIPTION & OPERATION:** Series 10 are centrifugal magnetic drive pumps, eliminating the need for a shaft seal. Pumps are serviceable with an adjustable wrench. Screws should be tightened in sequence & uniformly. Do not over tighten the screws or you may crush the plastic housing bosses. See the parts list for a breakdown of parts. Pumps are not self-priming, lack a suction lift, and thus require a **flooded suction**. Pumps **cannot be run dry** because the impeller requires the liquid being pumped for lubrication. The direction of motor rotation should be clockwise when facing the inlet of the pump. For liquids with a specific gravity greater than water, have a higher viscosity, or for elevated temperatures, a trimmed impeller may be necessary. For application assistance, contact March Pump.

**CAUTION IN ASSEMBLY & DISASSEMBLY:** The magnetic coupling in the pump is strong enough to warrant caution. When servicing the pump, the attraction of the impeller magnet and drive magnet may pull the impeller from your grasp. When assembling, hold onto the outer diameter of the impeller vanes with both hands and gently engage the impeller into the magnet field. Hold the impeller firmly and resist the magnetic attraction as you slowly put the impeller back in. The magnetic forces are strongest between 1/3 to 2/3 of engagement and will diminish when the magnets become aligned. Do not allow the impeller to snap into the rear housing, doing so may result in damage. Exercise caution in placing any of the magnets near steel, tools, or other sensitive instruments as doing so may result in damage or personal injury. When attaching drive magnet to motor shaft, position the face of the drive magnet 3/16 inch above the face of the motor bracket.

Model Abbreviations	K: Kynar				
<b>SPECIFICATIONS</b>	<b>TE-10K-MD</b>				
Product #	0161-0016-0100				
<b>UNITS</b>	<b>60 Hz</b>		<b>50 Hz</b>		
Max Flow	200 gpm   757 lpm		172.8 gpm   654 lpm		
Max Head	160 ft   69.4 psi   48.8 m		112 ft   48.5 psi   34.1 m		
Inlet - Outlet	3" MPT - 2" MPT				
Max Internal Pressure	75 psi / 517 kPa				
Max Liquid Temperature	190 °F / 87 °C				
Packed Weight	255.00 lbs / 115.66 kg				
<b>ELECTRICAL 3 Phase</b>	<b>Volts</b>	<b>Amps</b>	<b>Hp</b>	<b>kW</b>	<b>Rpm</b>
60 Hz	230	22.8	10	7.46	3450
60 Hz	460	11.4	10	7.46	3450
50 Hz	380	14.2	7.5	5.59	2850

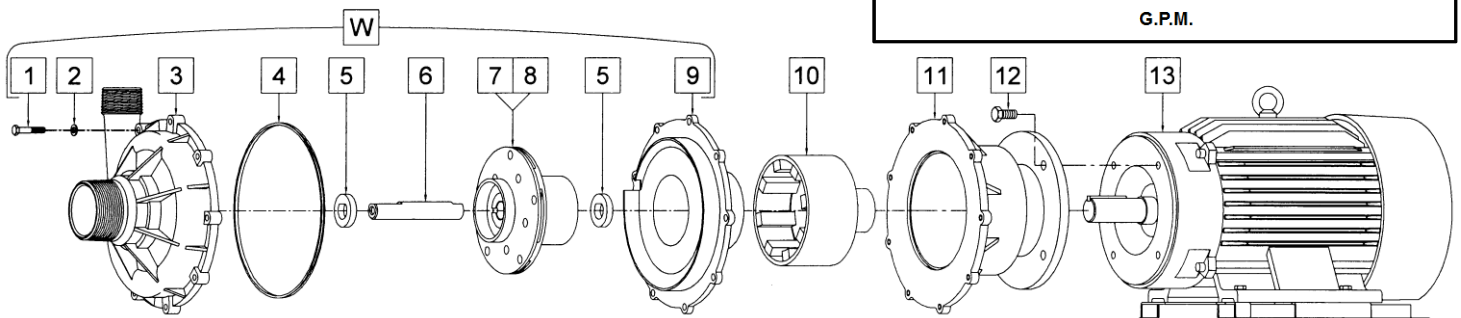
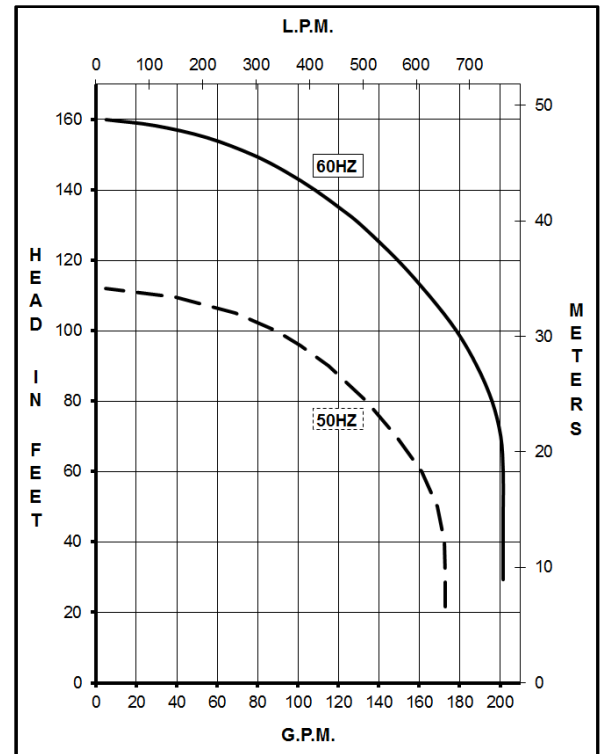
The motor is TEFC (Totally Enclosed Fan Cooled), U.L. listed, rated for continuous duty, and has a conduit box for electrical connections.

<b>Overall Size</b>	<b>Height</b>	<b>Width</b>	<b>Length</b>
	13.32" (33.8 cm)	13.94" (35.4 cm)	30.74" (78.0 cm)

**Materials in Contact w/Solution:** Kynar/Carbon Filled, Ceramic, Viton, & Carbon

All specifications & data are based on pumping water & are intended as a guideline only. Specifications may vary with different motors.

**LIMITED WARRANTY:** March pumps are guaranteed only against defects in workmanship or materials for a period of one year from date of manufacture pumping water. For the complete warranty and to register online go to: [www.marchpump.com/warranty-registration](http://www.marchpump.com/warranty-registration)



#	DESCRIPTION	MATERIAL	SIZE (Inches)	QTY.	PART #
1	Screw	Stainless	5/16-18 x 1-3/4 Lg.	9	0160-0029-1000
2	Washer	Stainless	5/16 ID x 5/8 OD	9	0160-0030-1000
3	Pump Housing	Kynar		1	0161-0008-1000
4	Gasket	Viton	9.750 ID x 10 OD	1	0161-0043-1000
5	Thrust Washer (Front & Rear)	Ceramic		2	0161-0001-1000
6	Shaft	Ceramic		1	0161-0002-1000
7	Impeller	Kynar w/Carbon Bushings		1	0161-0005-0400
8	Impeller (Option)	Kynar w/Mica Teflon Bushings		1	0161-0005-0600
9	Rear Housing	Kynar		1	0161-0009-1000
10	Drive Magnet			1	0161-0031-0100
11	Motor Bracket			1	0161-0007-0001
12	Screw	Stainless	1/2-13 x 1 Lg.	4	0160-0031-1000
13	TEFC Motor, 10HP, 230/460V, 3 Phase, 50/60Hz			1	0161-0012-1000
W	Wet End Kit			1	0161-0035-0100

Explosion proof and special voltage motors are available upon special order.

NOTE: Contact Factory for other materials and/or parts not listed.

0161-0018-1000 R13