



# MARCH PUMPS

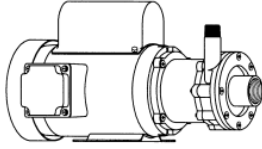
1819 PICKWICK AVE., GLENVIEW, IL 60026-1306, U.S.A  
 PHONE: (847) 729-5300 - FAX: (847) 729-7062  
 WWW.MARCHPUMP.COM

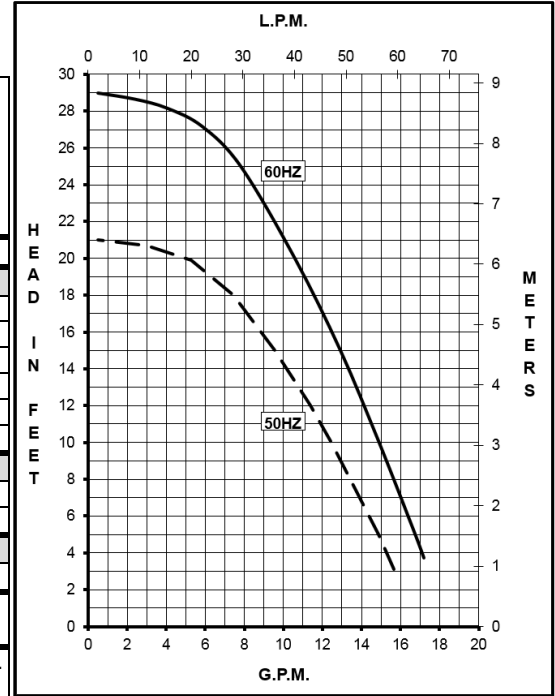
# TE-5S-MD

**DESCRIPTION:** Series 5 are centrifugal magnetic drive pumps, eliminating the need for a shaft seal. All are serviceable with a screwdriver.

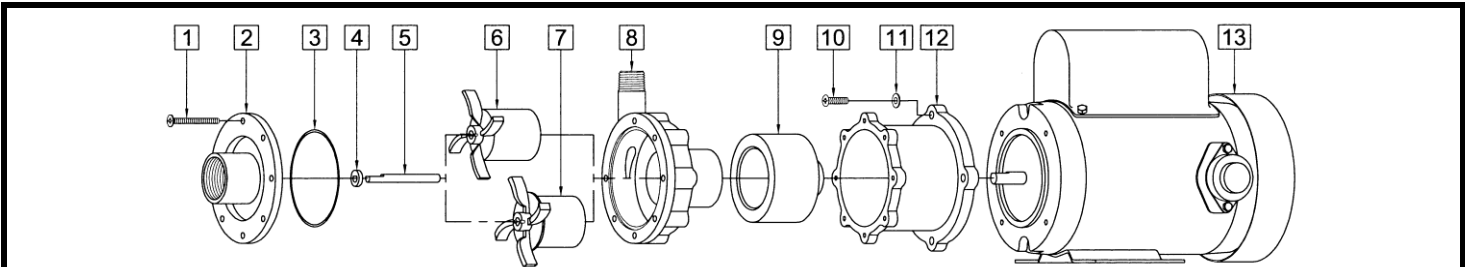
**OPERATION:** Pumps are not self-priming, lack a suction lift, and thus require a **flooded suction**. Pumps **cannot be run dry** because the impeller requires the liquid being pumped for lubrication. For liquids with a specific gravity greater than water, have a higher viscosity, or for elevated temperatures, a trimmed impeller may be necessary. For application assistance, contact March Pump.

**ELECTRICAL:** Models are dual voltage 115 Volt / 230 Volt and have a conduit box. Models have U.L. listed motors and are rated for continuous duty.

<b>MODEL</b>										
Product #	0150-0120-0100									
<b>UNITS</b>	<b>60 Hz</b>					<b>50 Hz</b>				
Max Flow	18 gpm / 68.1 lpm					15.98 gpm / 60.5 lpm				
Max Head	29 ft / 12.5 psi / 8.8 m					20.8 ft / 9 psi / 6.3 m				
Inlet - Outlet	1" FPT - 1/2" MPT					1" FPT - 1/2" MPT				
Max Internal Pressure	200 psi (1378 kPa)					200 psi (1378 kPa)				
Max Liquid Temperature	250 °F (121 °C)					250 °F (121 °C)				
Packed Weight	25.75 lbs / 11.68 kg					25.75 lbs / 11.68 kg				
<b>ELECTRICAL</b>	<b>V</b>	<b>A</b>	<b>Hp</b>	<b>kW</b>	<b>Rpm</b>	<b>V</b>	<b>A</b>	<b>Hp</b>	<b>kW</b>	<b>Rpm</b>
	115	2.10	0.2	0.149	3450	110	2.2	0.2	0.149	2850
	230	1.05	0.2	0.149	3450	220	1.1	0.2	0.149	2850
<b>OVERALL SIZE</b>	<b>Height</b>			<b>Width</b>			<b>Length</b>			
	7.19" (18.2 cm)			8.02" (20.3 cm)			13.31" (33.8 cm)			
	<b>Materials in Contact w/Solution:</b> 316 Stainless Steel, Viton, Ceramic, Carbon									



All specifications/values are based on pumping water and are intended as a guideline only. Values may vary with different motors.



When attaching the Drive Magnet to motor shaft, position the face of the Drive Magnet 3/32 inch below the face of the Motor Bracket.

#	DESCRIPTION	MATERIAL	SIZE (Inches)	QTY.	PART #
1	Screw	Stainless	#8-32 x 1-3/4 Lg.	7	0150-0021-1000
2	Cover	316 Stainless	1 FPT Inlet	1	0150-0111-0010
3	"O" Ring	Viton	0.078 CS x 2.834 ID	1	0750-0986-1000
	"O" Ring (Option)	Viton/Teflon	0.070 CS x 3-1/8 OD	1	0150-0171-1000
	"O" Ring (Option)	Buna N	0.078 CS x 2.834 ID	1	0750-0987-1000
4	Thrust Washer	Ceramic		1	0130-0028-1000
5	Shaft	Ceramic		1	0130-0024-1000
6	Impeller w/Carbon Bushing	316 Stainless		1	0150-0114-0400
	Impeller w/Mica Teflon Bushing (Option)	316 Stainless		1	0150-0114-0600
	Impeller (Option)	Polypropylene		1	0150-0098-0200
	Impeller w/Carbon Bushing (Option)	Polypropylene		1	0150-0098-0300
	Impeller w/ Mica Teflon Bushing (Option)	Polypropylene		1	0150-0098-0500
	Impeller (Option)	Kynar		1	0150-0125-0200
	Impeller w/Carbon Bushing (Option)	Kynar		1	0150-0125-0300
7	Impeller w/Mica Teflon Bushing (Option)	Kynar		1	0150-0125-0500
8	Rear Housing	316 Stainless	1/2 MPT Outlet	1	0150-0110-0010
9	Drive Magnet			1	0150-0176-0300
10	Screw	Stainless	#10-32 x 3/4 Lg.	4	0150-0050-1000
11	Washer	Stainless	#10	4	0150-0051-1000
12	Motor Bracket	Plastic		1	0150-0070-0100
13	Motor, TEFC, 115/230 V, 50/60 Hz			1	0150-0090-1000

**LIMITED WARRANTY:** March pumps are guaranteed only against defects in workmanship or materials for a period of one year from date of manufacture pumping water. For the complete warranty and to register online go to [www.marchpump.com/warranty-registration](http://www.marchpump.com/warranty-registration)

Explosion proof & special voltage motors are available for upon special order.

NOTE: Contact Factory for other materials and/or parts not listed.

0150-0060-1300 R1