

Trouble Shooting

1. Pump slowly moving the water:

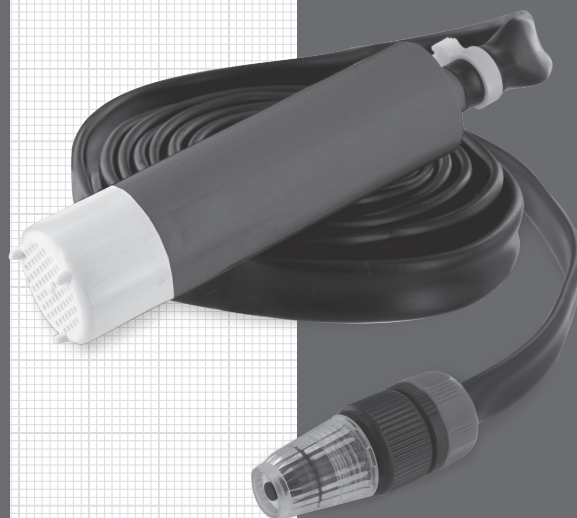
- Check to make sure the power source is fully charged
- Check and clean the connections between the pump and power source
- Make sure hose has no kinks
- Fluid may be too thick for the pump
- Check and clean the filter

2. Pump not pumping water:

- Check and replace 5 amp fuse if necessary
- Check power source
- Turn off pump, wait three seconds and turn on pump
- Check and clean filter
- Pump has reached end-of-life
- Check hose for blockage



ITT



ITT

Engineered for life

U.S.A	+1 978 281 0440
UNITED KINGDOM	+44 (0) 1992 450 145
JAPAN	+81 (0) 45 475 8906
GERMANY	+49 (0) 40 53 53 73 0
ITALY	+39 039 6852323

Discover ITT at www.rule-industries.com

The products described herein are subject to the ITT one year limited warranty, which is available for your inspection upon request.

Les produits décrits ci-dessous bénéficient de la garantie limitée d'un an de ITT, que vous pouvez consulter sur simple demande.

Die nachstehend beschriebenen Produkte unterliegen einer einjährigen Gewährleistung. Die Gewährleistungsbedingungen können bei ITT angefordert werden.

I prodotti qui descritti sono coperti dalla garanzia ITT limitata di un anno, disponibile per la visione su richiesta.

De hierin beschreven producten worden aangeboden met de beperkte ITT garantie van één jaar. Deze is op aanvraag verkrijgbaar ter inzage.

För produkterna som beskrivs nedan utfärdar ITT ett års begränsad garanti, som vi kan skicka till dig på begäran.

Los productos descritos en este folleto están respaldados por la garantía limitada de ITT por un año, que está disponible para su lectura a pedido.

Charge N' Flow Portable Pumps

Installation Guide

- FR** Guide d'installation
- DE** Einbauanleitung
- IT** Guida all'installazione
- NL** Installatiegids
- SE** Installationsmanual
- ES** Guía de instalación





ITT

Charge N' Flow Portable Pumps

Maximum Pump Volume (OPEN FLOW)	280 GPH/1060 LPH
Gallons (water) per Charge	Approx. 100 Gallons
Charge Time	10-12 Hours
Voltage - Pump	12 Volt

Components

1. Pump with Quick Disconnect Fitting and Fuse
2. Battery Terminal Power Adaptor
3. Vehicle Power Adaptor
4. 8' Lay Flat Hose
5. Spray Nozzle
6. Case with Integrated Battery
7. Battery Charger

Power Options

This product is designed with two different adaptors and a rechargeable battery enclosed in the carrying case to allow the consumer to choose which power source will best suit their needs.

Always make sure your hands are dry when attaching the different power adaptors to prevent electrical shock. Do not attach the power adaptors when your hands are wet.

Always connect and disconnect the power adaptors by tightly holding the plastic connectors. Never try to disconnect by pulling on wires.

Battery Clips

Note: Red Clip is Positive (+) and Black Clip is Negative (-)

1. Place the pump in the fluid to be transferred
2. Attach the connector on the battery clips to the connector on the pump wire
3. Attach the clips to any 12 volt vehicle battery (car, truck, boat, RV etc.)
4. The pump will turn on
5. Pump fluid
6. Disconnect battery clips from terminals
7. Rinse and drain pump and hose for storage

WARNING



Lead-acid batteries (typically found in boats, RVs and vehicles) produce hydrogen gas during normal operation. Hydrogen gas is flammable, explosive and harmful to breathe. Only use the optional battery clips in a well ventilated area. Open compartment and allow a sufficient amount of time for the gases to escape before attaching the battery clips.

Vehicle Power Adaptor

1. Place the pump in the fluid to be transferred
2. Attach the connector on the vehicle power adaptor to the connector on the pump wire
3. Insert the adaptor into to any 12 volt vehicle power receptacle (car, truck, boat, RV etc.)
4. The pump will turn on
5. Pump fluid
6. Remove adaptor from power receptacle
7. Rinse and drain pump and hose for storage

Integrated Battery Option

1. Place the pump in the fluid to be transferred
2. Attach the connector on the pump wire to the battery wire connector mounted in the case
3. The pump will turn on
4. Pump fluid
5. Disconnect battery from pump
6. Rinse and drain pump and hose for storage

DO NOT leave the pump unattended attached to the battery. Failure to remove the battery from the pump will discharge the battery completely, damaging the battery.

Charging the Battery:

Before using the battery pack for the first time, allow the unit to charge for at least 8 hours.

1. Plug the battery charger into a standard 110 volt electrical outlet.
2. Attach the charger to the battery
3. Allow the battery to charge for 10 - 12 hours for a complete charge
4. After the battery is fully charged, remove the battery from the charger to prevent the battery from discharging through the charger.

WARNING



Use only the supplied battery charger. Any other type charger may cause damage to the unit and the surrounding area. Do not allow the charger to remain attached to the battery for longer than twelve (12) hours.

The battery will lose a charge if it has not been used for an extended period of time. It may need to be recharged before use.

The battery and charger can get very warm to the touch during the charging process. This is part of the normal charging cycle and should cool when the unit is disconnected from the wall outlet.

Special Instructions:

This case contains a 9.6 volt Nickel Metal Hydride battery. In the event the battery can no longer hold a charge or becomes damaged, please dispose of the battery according to your local laws and regulations.

Battery Care

These battery packs have been specially paired with a charger that provides the longest lifespan of the battery. To extend the life of the battery, always allow the battery to receive a full 10-12 hour charge on the charger. Shortening the time on the charger will cause the battery to retain a "memory" and will cause a lower amount of energy stored.

Never attempt to open the battery pack and expose the individual cells. If the battery pack becomes damaged, do not try to charge a damaged battery pack.

If any liquid from the battery comes in contact with your skin, wash quickly with a mild detergent and water, neutralize the liquid with a mild acid such as vinegar and consult a doctor if necessary. If the liquid gets into your eyes, flush with clean water for 15 minutes and consult a doctor for further instructions.

Do not for any reason try to incinerate the battery pack. The battery pack can explode, cause severe injury and create toxic fumes.

Important Notes

- This unit is not to be used for potable water
- Charge N' Flow has the ability to pump diesel, water, lake water, salt water, and anti-freeze
- Always inspect the pump and charger wires before each use
- If the wires have been damaged or split replace them immediately
- Make sure the pump is securely connected to the power adaptor and make sure the hose is securely fastened on the end of the pump
- Disconnect the pump when the battery begins to get low. Allowing the pump to remain attached will discharge the battery too much and could damage the unit.
- Clean the unit after use with fresh water
- Allow your kit to dry before storing it
- Don't run the pump without fluid or with a closed spray nozzle for more than two minutes
- Don't subject the pump and its components to extreme environments which may exceed 105°F
- Clean the case with pressurized air or wipe the cavities with a damp cloth. For stubborn dirt or grime, use a mild detergent

WARNING



DO NOT PUMP GASOLINE, PETROL, ALCOHOL OR ANY OTHER FLAMMABLE LIQUID. DO NOT USE WHERE FLAMMABLE VAPORS ARE PRESENT.

WARNING



This pump is designed for use with fresh water, salt water, diesel and anti-freeze. Use with any other hazardous, caustic, or corrosive material could result in damage to the pump and the surrounding environment, possible exposure to hazardous substances, injury and/or explosion.