

| ITEM NO. | PART NUMBER | DESCRIPTION         | QTY. |
|----------|-------------|---------------------|------|
| 1        | 24628       | SHAFT               | 1    |
| 2        | 12228       | HOUSING             | 1    |
| 3        | 24625       | ADAPTER             | 1    |
| 4        | 14161       | EXT. RETAINING RING | 2    |
| 5        | 24624       | BODY                | 1    |
| 6        | 04259       | INT. RETAINING RING | 1    |
| 7        | 05133       | SPACER              | 1    |
| 8        | 23448       | BALL BEARING        | 2    |
| 9        | 12856       | WEAR PLATE          | 1    |
| 10       | 12314       | SEAL ASSY           | 1    |
| 11       | 12256       | SEAT ASSY           | 1    |
| 12       | 12231       | O-RING              | 1    |
| 13       | 04432       | WOODRUFF KEY        | 1    |
| 14       | 10615       | IMPELLER            | 1    |
| 15       | 12855       | GASKET              | 1    |
| 16       | 10944       | CAM                 | 1    |
| 17       | 10514C      | LIP SEAL            | 1    |
| 18       | 10515C      | CAM SCREW ASSY      | 1    |
| 19       | 12710       | LOCKWASHER          | 7    |
| 20       | 12857       | 1/4-20 HHCS         | 7    |
| 21       | 04264       | FLAT WASHER         | 1    |
| 22       | 13285       | TAG                 | 1    |
| 23       | 24629       | SLINGER             | 1    |
| 24       | 04258       | EXT. RETAINING RING | 1    |
| 25       | 23083       | LABEL               | 1    |

INVOLUTE SPLINE DATA:

FLAT ROOT SIDE FIT  
 30 DEGREE PRESSURE ANGLE  
 16/32 SPLINE PITCH  
 9 TEETH  
 CLASS 5 FIT

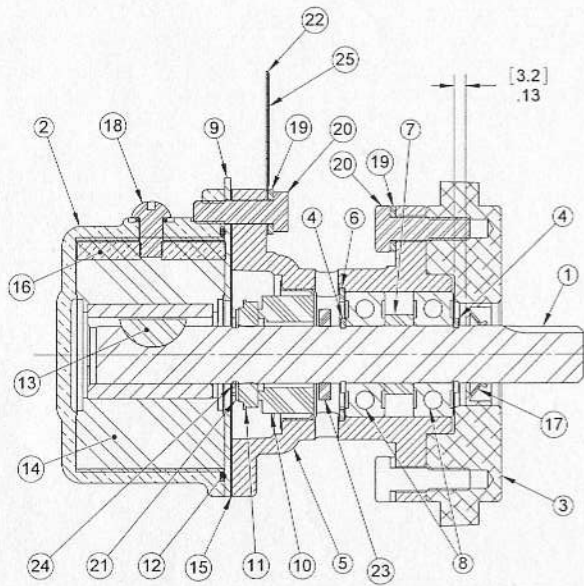
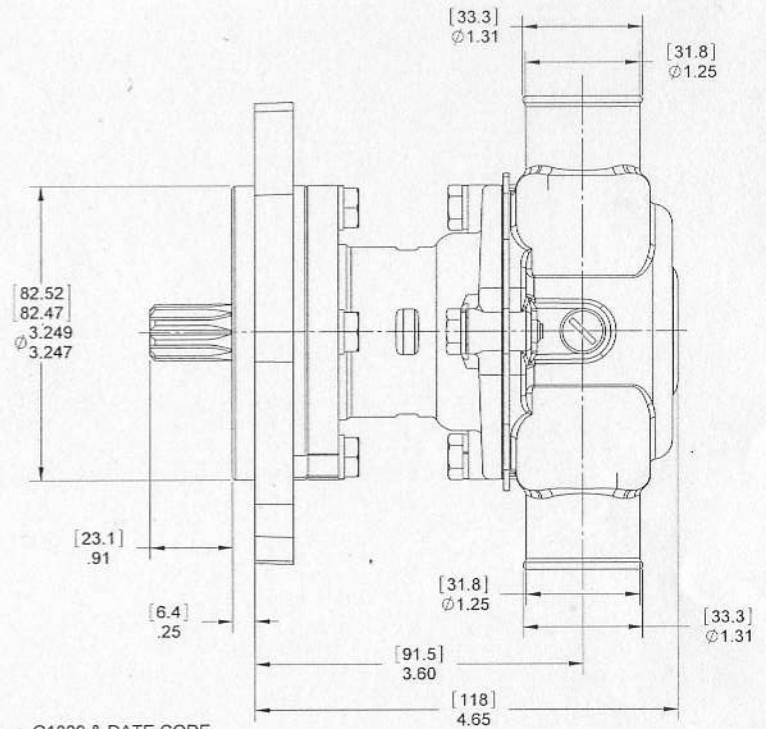
BASE DIAMETER:.....4871393  
 PITCH DIAMETER:.....5625000  
 MAJOR DIAMETER:.....625  
 FORM DIAMETER:.....504  
 MINOR DIAMETER:.....465  
 PIM DIAMETER:.....1200  
 OCER PIN DIMENSION:.....7290

CIRCULAR TOOTH THICKNESS  
 MAX EFFECTIVE:.....0982  
 MIN ACTUAL:.....0956

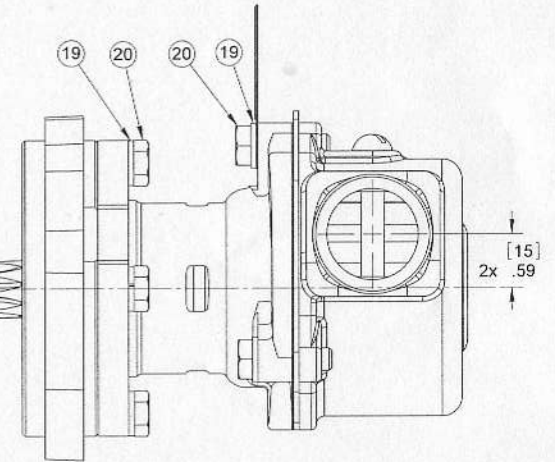
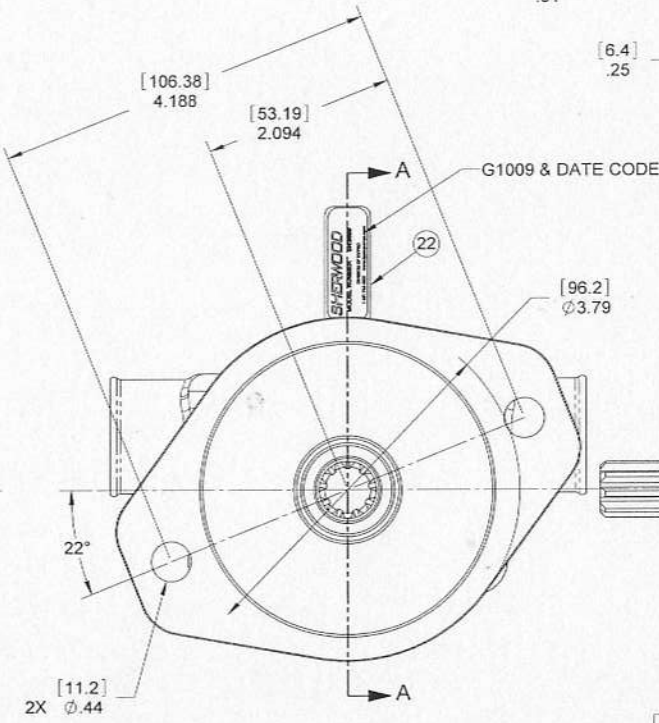
ASSEMBLY NOTES:

- (REMOVED ECN 6293).
- LIP SEAL, # 17, TO BE INSTALLED DRY.
- TORQUE HEX HEAD CAP SCREWS, # 20, TO 60-85 IN/LBS.

PART NUMBER G1009



SECTION A-A



|   |                     |   |                 |
|---|---------------------|---|-----------------|
| <b>SHERWOOD</b>   |                     | REPLACES PART NO.   | REV.            |
| A Div. of Hypro Corporation A PENTAIR COMPANY               |                     | DWG BY: FLA   | DATE: 7/12/2005 |
| 375 Fifth Avenue NW, New Brighton, MN 55112, (651) 766-6300 |                     | CHECKED BY: DV  | DATE: 9/30/2005 |
| DRAWING BASED ON ASME Y14.5M-1994                           | DO NOT SCALE PRINT  | APPROVED BY:  | DATE:           |
| SCALE 1:1   | SHEET NUMBER 1 OF 1 | THIS DRAWING IS THE PROPERTY OF HYPRO, AND WITHOUT WRITTEN AUTHORIZATION, MUST NOT BE COPIED OR COMMUNICATED. |                 |
| PART DESCRIPTION  |                     | PART NUMBER   | REV.            |
| RUBBER IMPELLER PUMP  |                     | G1009   | B               |

| REV. | ECN  | DESCRIPTION                    | CHKD. | DATE      |
|------|------|--------------------------------|-------|-----------|
| B    | 5293 | REMOVE NOTE 1, APPLY LOCITE... | DV    | 8/5/2007  |
| A    | 5174 | RELEASE TO PRODUCTION          | DY    | 9/30/2005 |

ONAN 132-0464