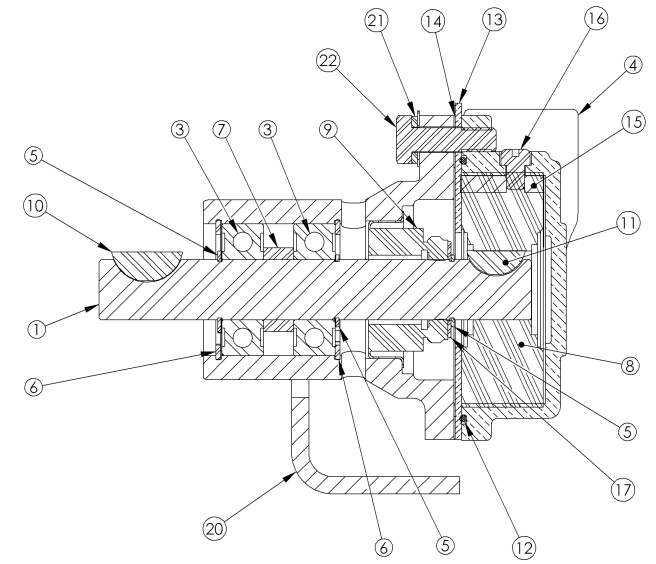
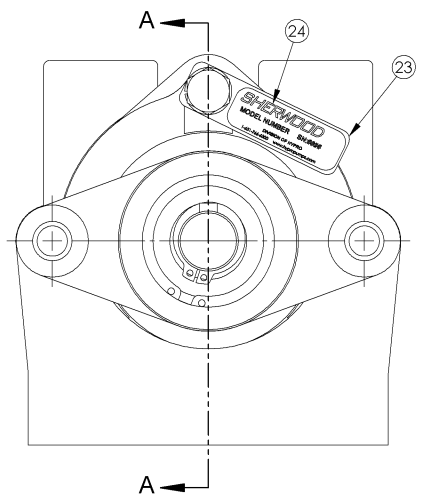
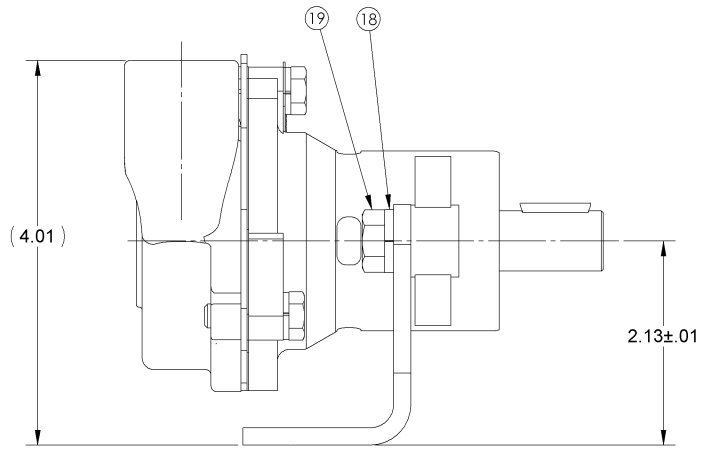


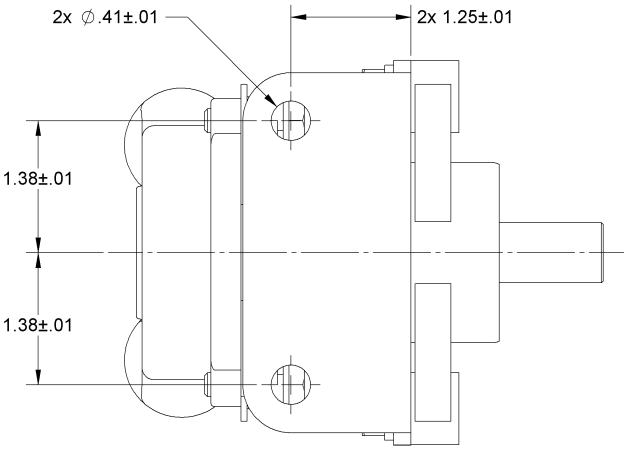
NOTES:

1. PRINT MODEL AND DATE CODE ON 23083 LABEL, (24).
2. APPLY PERMATEX TO CAM SCREW, (17) BEFORE ASSEMBLY.
3. USE COOLANT TO AID IN INSTALLATION OF RUBBER IMPELLER, (8).
4. USE WATER ONLY WHEN INSTALLING TYPE 6A SEAL/SEAT ASSY, (10).
5. TORQUE 1/4-20 HHCS, (22), TO 5 - 8 FT/LBS.

ITEM NO.	PART NUMBER	DESCRIPTION	QTY.
1	21578	SHAFT	1
2	12227	BODY	1
3	12211	BALL BEARING	2
4	18451	HOUSING - MACHINED	1
5	04258	EXT. RETAINING RING	3
6	04259	INT. RETAINING RING	2
7	05133	SPACER	1
8	9000	RUBBER IMPELLER	1
9	12314	TYPE 6A SEAL/SEAT ASSY	1
10	04432	WOODRUFF KEY	1
11	18576	KEY, WOODRUFF	1
12	12231	O-RING	1
13	12856	WEAR PLATE	1
14	12855	GASKET	1
15	18663	CAM	1
16	10195	CAM SCREW 10-32NFT	1
17	04264	FLAT WASHER	1
18	04991	LOCKWASHER - 3/8	2
19	11633	HHCS 3/8-16 UNC	2
20	12393	MOUNTING BRACKET	1
21	12710	LOCKWASHER	3
22	12857	1/4-20 HHCS	3
23	13285	TAG	1
24	23083	LABEL	1



SECTION A-A



SHERWOOD
 A Div. of Hypro Corporation A PENTAIR COMPANY
 375 Fifth Avenue NW, New Brighton, MN 55112, (651) 766-6300

REPLACES PART NO. _____ REV. _____

DWG BY: **SEB** DATE: **6/15/1995**

CHECKED BY: _____ DATE: _____

APPROVED BY: _____ DATE: _____

DRAWING BASED ON ASME Y14.5M-1994 DO NOT SCALE PRINT

SCALE: 1:1 SHEET NUMBER: 1 OF 1

THIRD ANGLE PROJECTION

PART DESCRIPTION: **RUBBER IMPELLER PUMP ASSY**

PART NUMBER: **G11**

REV. **D**

THIS DRAWING IS THE PROPERTY OF HYPRO, AND WITHOUT WRITTEN AUTHORIZATION, MUST NOT BE COPIED OR COMMUNICATED.

REV.	ECN	REVISION DESCRIPTION	CHKD	DATE
D	4527	REMOVED 12256 SEAL ASSY, ADDED NOTE 5, UPDATED DWG FORMAT, REDIMENSIONED NOTE 4 WAS "USE PAC-EASE OR EQUIV."	PEB	11/30/2007
C	5997	ADDED NOTES 3 & 4.	DV	11-13-2006
B	5814	UPDATE BOM, REDRAWN	DV	8/3/2006