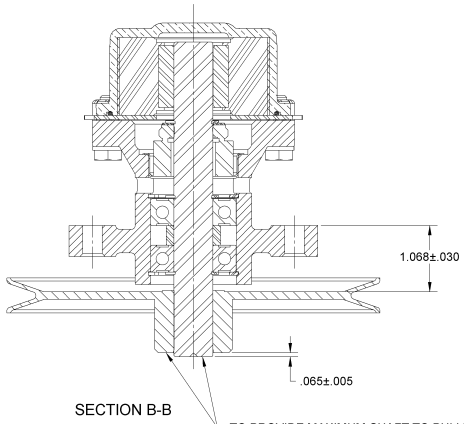
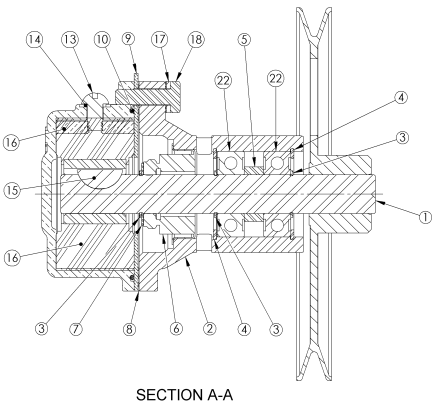
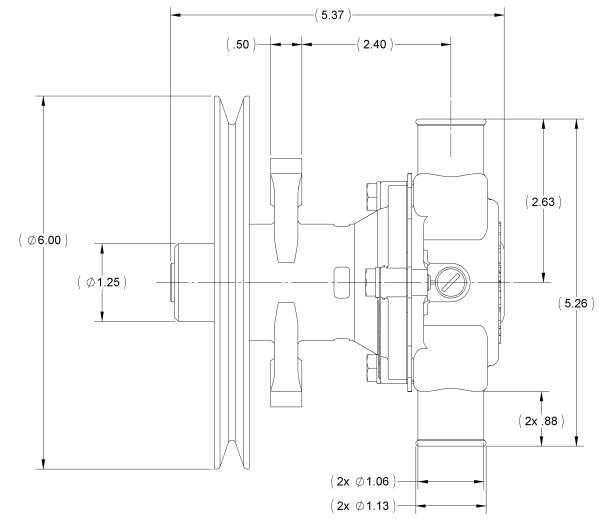


ITEM NO.	PART NUMBER	DESCRIPTION	QTY.
1	13363	SHAFT	1
2	17501	BODY	1
3	04258	EXT. RETAINING RING	3
4	04259	INT. RETAINING RING	2
5	05133	SPACER	1
6	12314	TYPE 6A SEAL/SEAT ASSY	1
7	04264	FLAT WASHER	1
8	12855	GASKET	1
9	12856	WEAR PLATE	1
10	12231	O-RING	1
11	12303	HOUSING	1
12	15893	CAM	1
13	19995	SCREW 1/4-20 ROUND HD	1
14	19996	CAM WASHER	1
15	04432	WOODRUFF KEY	1
16	09559	RUBBER IMPELLER	1
17	12710	LOCKWASHER	3
18	12857	1/4-20 HHCS	3
19	13285	TAG	1
20	13362	PULLEY	1
21	23083	LABEL	1
22	12211	BALL BEARING	2

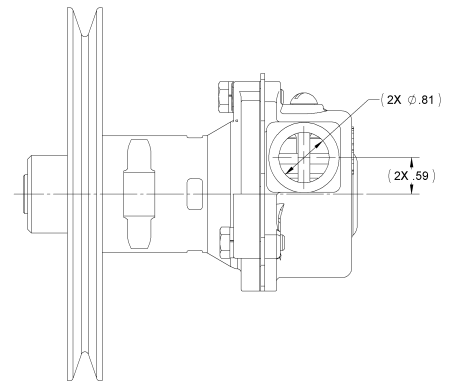
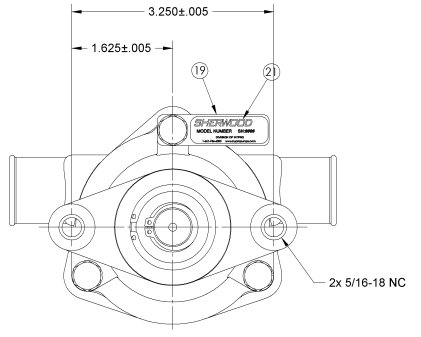
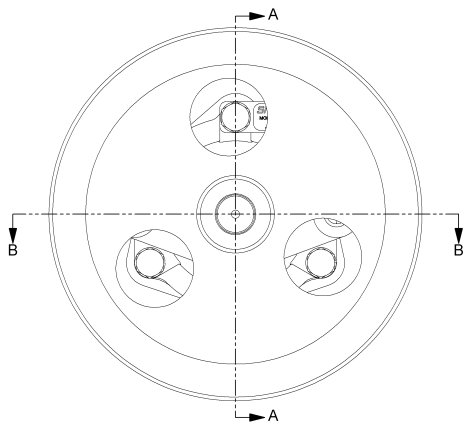
- NOTES:
1. APPLY BEAD OF PERMATEX AROUND CAM THREADED HOLE PRIOR TO ASSEMBLY ITEM 12.
 2. USE WATER ONLY WHEN INSTALLING TYPE 6A SEAL/SEAT ASSY, ITEM 6.
 3. USE COOLANT TO AID IN INSTALLATION OF RUBBER IMPELLER, ITEM 16.
 4. TORQUE 1/4-20 HHCS TO 5 - 8 FT/LBS, ITEM 18.
 5. PRESSURE TEST PUMP TO 20 - 30 PSI
 6. PRINT "G22" AND "DATE CODE" ON LABEL (21) AND ATTACH TO TAG (19) AS SHOWN.



TO PROVIDE MAXIMUM SHAFT TO PULLEY BREAK-AWAY TORQUE THE SHAFT MUST BE HELD SQUARE WITH THE PULLEY HUB WHEN THEY ARE PRESSED TOGETHER. SHEARING OF METAL WILL REDUCE BREAK-AWAY TORQUE.



SECTION A-A



SHERWOOD
A Div. of Hypro Corporation A PENTAIR CORPORATION
 375 9TH AVENUE NW, NEW BRITAIN, NH 05152, USA 761-6300

REPLACES PART NO. _____ REV. _____

DWG BY: **RJW** DATE: 11/03/1983
 CHECKED BY: **FBM** DATE: 01/12/1984
 APPROVED BY: **FBM** DATE: 01/12/1984

DRAWING BASED ON ASME Y14.5M-1994 (DO NOT SCALE PRINT) SIZE: **D**
 THIS DRAWING IS THE PROPERTY OF HYPRO AND WITHOUT WRITTEN AUTHORIZATION, MUST NOT BE COPIED OR COMMUNICATED.

SCALE: 1:1 SHEET NUMBER: 1 OF 1
 THIRD ANGLE PROJECTION

PART DESCRIPTION: **RUBBER IMPELLER PUMP**
 PART NUMBER: **G22**

K	4527	REMOVED 1208 BALL BEARING 12011C CAM WASHER ASSY. ADD 19922 CAM WASHER 19922 CAM WASHER	FEB	11/20/2007
J	4507	NOTE: IN PART USE PASCAL CASE OR 505017. FEDERAL OR NEW 408MM. ADD 12211 BALL BEARING 12211. REVISED 23448	EJE	06/12/2005
I	4500	UPDATED BOM & REWORK	DV	10/20/2004
REV.	SCN	REVISION DESCRIPTION	CHG'D	DATE