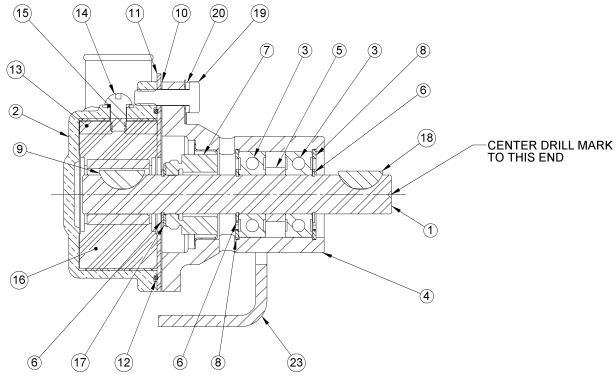


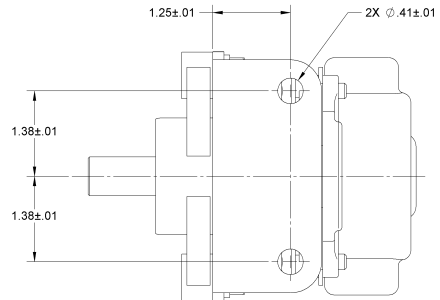
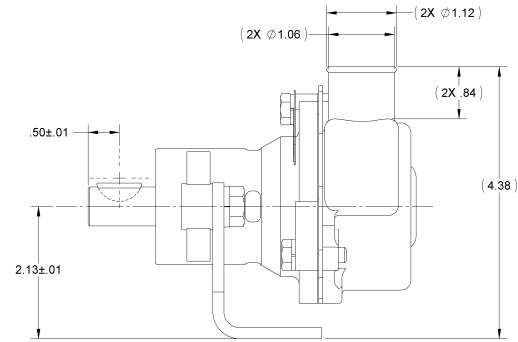
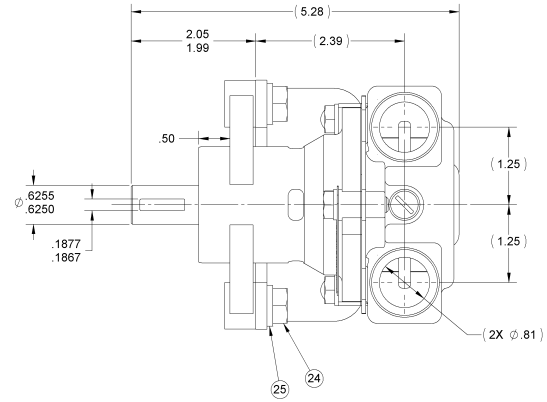
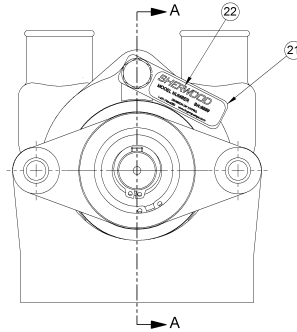
ITEM NO.	PART NUMBER	DESCRIPTION	QTY.
1	11877	SHAFT	1
2	11903	IMPELLER HOUSING	1
3	12211	BALL BEARING	2
4	12227	BODY	1
5	05153	SPACER	1
6	04258	EXT. RETAINING RING	3
7	12314	TYPE 6A SEAL/SEAT ASSY	1
8	04259	INT. RETAINING RING	2
9	04432	WOODRUFF KEY	1
10	12855	GASKET	1
11	12856	WEAR PLATE	1
12	12231	O-RING	1
13	15883	CAM	1
14	19985	SCREW 1/4-20 ROUND HD	1
15	19986	CAM WASHER	1
16	09959	RUBBER IMPELLER	1
17	04264	FLAT WASHER	1
18	12622	KEY	1
19	12857	1/4-20 HHCS	3
20	12710	LOCKWASHER	3
21	13285	TAG	1
22	23083	LABEL	1
23	12393	MOUNTING BRACKET	1
24	11633	HHCS 3/8-16 UNC	2
25	04991	LOCKWASHER - 3/8	2

ASSEMBLY NOTES:

1. APPLY BEAD OF PERMATEX AROUND THREADED HOLE IN CAM, ITEM 13.
2. USE WATER ONLY WHEN INSTALLING TYPE 6A SEAL/SEAT ASSY, ITEM 7.
3. USE COOLANT TO AID IN INSTALLATION OF RUBBER IMPELLER, ITEM 16.
4. TORQUE 1/4-20 HHCS TO 5 - 8 FT/LBS. ITEM 19.
5. PRESSURE TEST PUMP AT 20 - 30 PSI.
6. PRINT ON LABEL, ITEM 22 G2 DATE CODE.



SECTION A-A



<p><b>SHERWOOD</b> A Div. of Hypro Corporation A PERMCO COMPANY 375 Fern Avenue NW, New Brighton, MN, 55112, (651) 766-6300</p>				<p>REPLACES PART NO. _____</p>	<p>REV. _____</p>
<p>F 6527 REMOVE 1204 SEAL ASSY &amp; 1201 SC CAM WASHER ASSY ADDED 1998 CAM W/KEY &amp; 1996 CAM WASHER (REDESIGN ON NEW DESIGN)</p>	<p>PFB 10/31/2007</p>	<p>SIZE D</p>	<p>CHECKED BY: RBM DATE 11/15/1979</p>	<p>APPROVED BY: _____ DATE _____</p>	<p>THIS DRAWING IS THE PROPERTY OF HYPRO. AND WITHOUT WRITTEN AUTHORIZATION, MUST NOT BE COPIED OR COMMUNICATED.</p>
<p>E 4907 CHANGE BEARING TO 12211. WAS 2348</p>	<p>RE 6/30/2005</p>	<p>DRAWING BASED ON ASME Y14.9M-1994 (DO NOT SCALE PRINT)</p>	<p>SCALE 1:1</p>	<p>SHEET NUMBER 1 OF 1</p>	<p>PART NUMBER G2</p>
<p>D 81814 SPACER NON</p>	<p>CHK 8/16/2002</p>	<p>THIRD ANGLE PROJECTION</p>	<p>SCALE 1:1</p>	<p>SHEET NUMBER 1 OF 1</p>	<p>PART NUMBER G2</p>
<p>C - 128P WAS 1232</p>	<p>SH 7/15/1990</p>	<p>PART DESCRIPTION</p>	<p>SCALE 1:1</p>	<p>SHEET NUMBER 1 OF 1</p>	<p>PART NUMBER G2</p>
<p>B - REDRAWN WITHOUT CHANGE</p>	<p>KB 12/29/1984</p>	<p>IMPELLER PUMP ASSY</p>	<p>SCALE 1:1</p>	<p>SHEET NUMBER 1 OF 1</p>	<p>PART NUMBER G2</p>
<p>REV. EGN</p>	<p>REVISION DESCRIPTION</p>	<p>CHKD: G2</p>	<p>SCALE 1:1</p>	<p>SHEET NUMBER 1 OF 1</p>	<p>PART NUMBER G2</p>