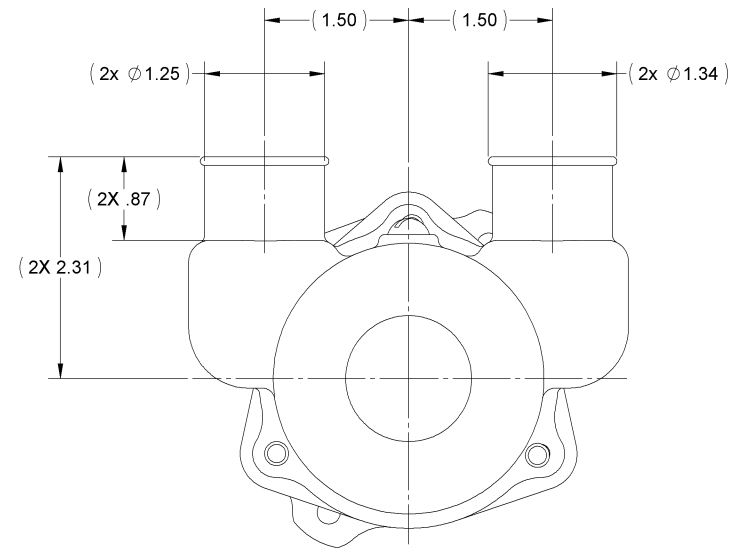
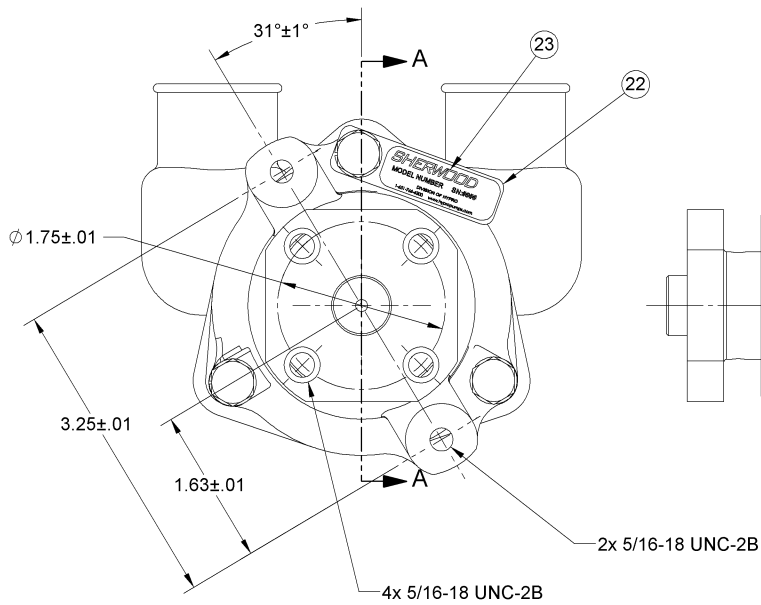
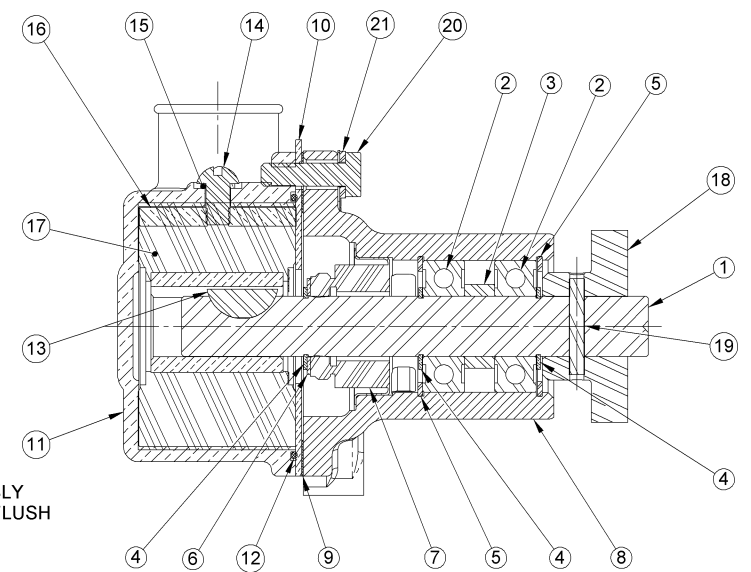
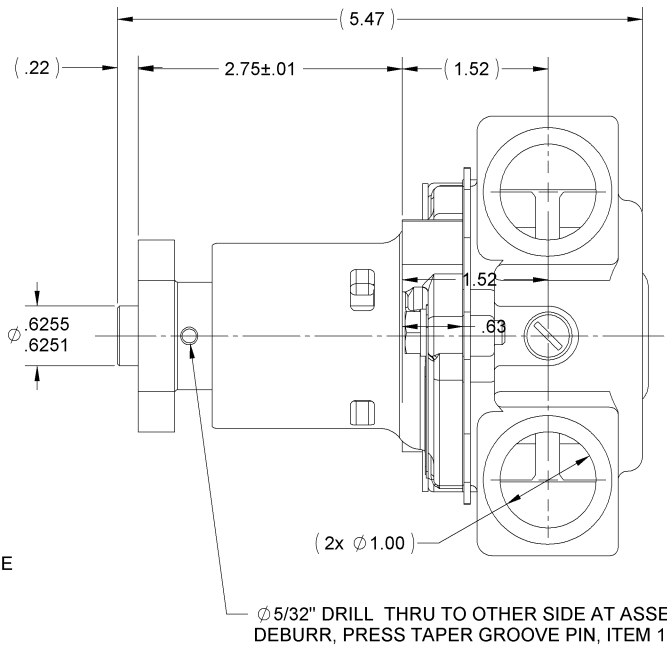


ITEM NO.	PART NUMBER	DESCRIPTION	QTY.
1	12596	SHAFT	1
2	12211	BALL BEARING	2
3	05133	SPACER	1
4	04258	EXT. RETAINING RING	3
5	04259	INT. RETAINING RING	2
6	04264	FLAT WASHER	1
7	12314	TYPE 6A SEAL/SEAT ASSY	1
8	12328	BODY - MACHINED	1
9	12855	GASKET	1
10	12856	WEAR PLATE	1
11	12907	HOUSING - MACH	1
12	12231	O-RING	1
13	04432	WOODRUFF KEY	1
14	19995	SCREW 1/4-20 ROUND HD	1
15	19996	CAM WASHER	1
16	10944	CAM	1
17	10615	RUBBER IMPELLER	1
18	10769	HUB - PULLEY	1
19	09420	TAPER GROOVE PIN	1
20	12857	1/4-20 HHCS	3
21	12710	LOCKWASHER	3
22	13285	TAG	1
23	23083	LABEL	1

NOTES:

- APPLY BEAD OF PERMATEX AROUND THREADED HOLE IN CAM PRIOR TO ASSEMBLY, (ITEM 16).
- USE WATER ONLY WHEN INSTALLING TYPE 6A SEAL/SEAT ASSY, (ITEM 8).
- USE COOLANT TO AID IN INSTALLATION OF RUBBER IMPELLER, (ITEM 17).
- TORQUE 1/4-20 HHCS TO 5 - 8 FT/LBS, (ITEM 20).
- PRESSURE TEST PUMP TO 20 - 30 PSI.
- PRINT "G56" AND "DATE CODE" ON LABEL, (ITEM 23).



SHERWOOD A Div. of Hypro Corporation A PENTAIR COMPANY 375 Fifth Avenue NW, New Brighton, MN 55112, (651) 766-6300		REPLACES PART NO.	REV.
		DWG BY: RW DATE: 12/13/1983	CHECKED BY: AVB DATE: 12/20/1983
DRAWING BASED ON ASME Y14.5M-1994		DO NOT SCALE PRINT	SIZE C
APPROVED BY: _____ DATE: _____ THIS DRAWING IS THE PROPERTY OF HYPRO, AND WITHOUT WRITTEN AUTHORIZATION, MUST NOT BE COPIED OR COMMUNICATED.		SCALE 1:1	SHEET NUMBER 1 OF 1
PART DESCRIPTION RUBBER IMPELLER PUMP		PART NUMBER G56	REV. F

REV.	ECH.	DESCRIPTION	CHKD.	DATE
F	6527	REMOVED 12254 SEAT ASSY. & 10515C CAM SCREW ASSY. ADDED 19995 CAM SCREW & 19996 CAM WASHER. NOTE 2 WAS "USE PAC-EASE OR EQUIV". REDIMENSIONED.	PBB	11/15/2007
E	6195	ADDED NOTES, REDRAWN ON NEW FORMAT	PB	6/15/2007