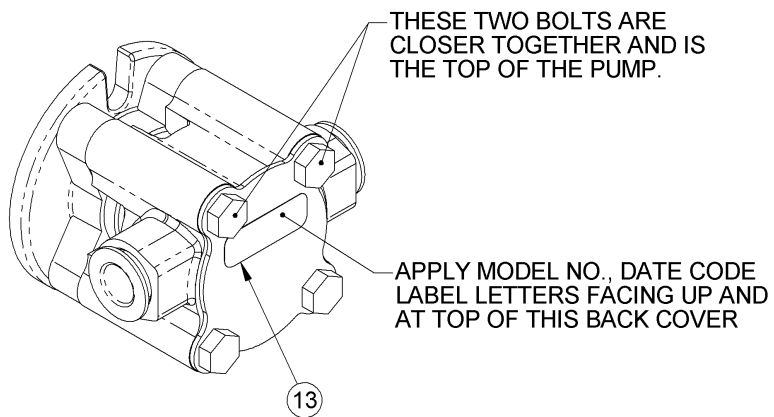


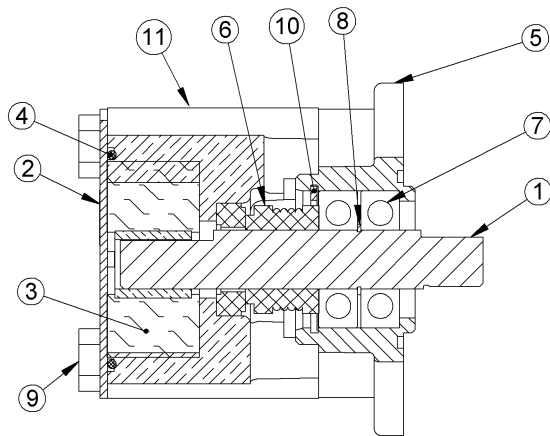
ITEM NO.	QTY.	PART NO.	DESCRIPTION
1	1	23445	SHAFT
2	1	23366	COVER
3	1	08000	RUBBER IMPELLER
4	1	23447	O-RING
5	1	23354	BODY
6	1	23459	MECHANICAL SEAL
7	2	23323	BALL BEARING
8	1	23325	RETAINING RING
9	4	23367	BOLT
10	1	23443	RETAINING RING
11	1	24100	HOUSING
12	2	18449	PORT PLUG
13	1	23083	LABEL

PART NUMBER **G8001**

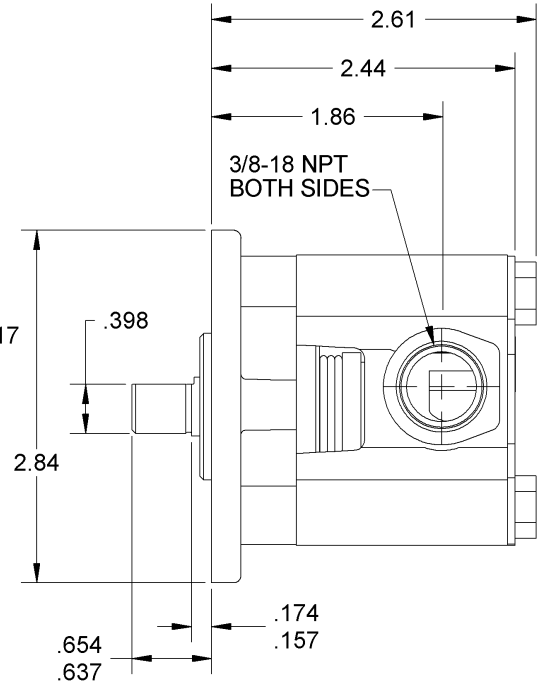
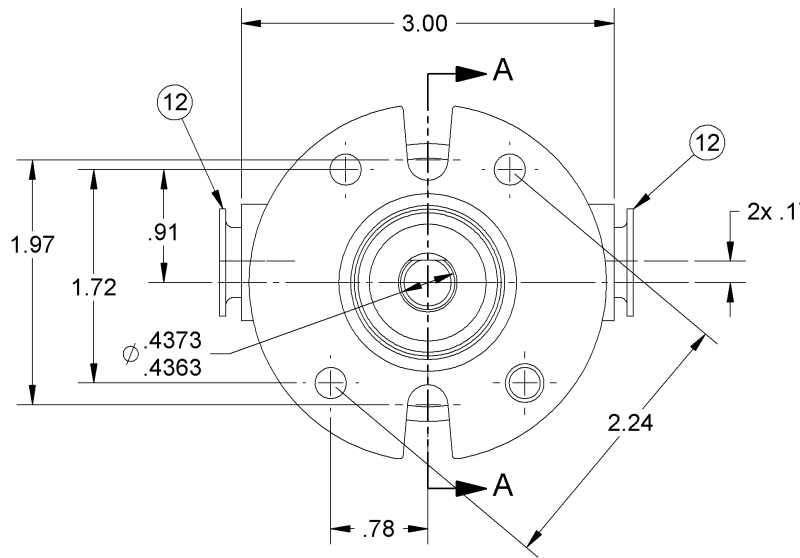


ASSEMBLY NOTES:

1. USE PAC-EASE, OR EQUIV, ON SHAFT TO ASSEMBLY MECHANICAL SEAL.
2. STATIC TEST TO 20 PSI.
3. DO NOT USE SILICON IN ASSEMBLY
4. THE SHORT FLAT OF THE SHAFT IS TO GO TO THE FLANGE END OF THE PUMP. THE LONG FLAT TANG IS TO GO TO THE IMPELLER END OF THE PUMP.



SECTION A-A



SHAFT DIMENSION NOTES:

1. SHAFT AS ASSEMBLED WILL EXTEND FROM FLANGE .174/.157.
2. IF SHAFT IS PUSHED IN, THE SHAFT DIMENSION CAN BE A MIN. OF .117.

FORM FM-EN-029 REV_

REV.	ECN	REVISION DESCRIPTION	CHKD	DATE
B	4154	REVISED PICTORIALY	DV	04-08-04
A	2089	RELEASE TO PRODUCTION	DV	01-02-03

SHERWOOD A Div. of Hypro Corporation A WICOR COMPANY 375 Fifth Avenue NW, New Brighton, MN 55112, (651) 766-6300		EXPERIMENTAL PART NO.	REV
DRAWING BASED ON ASME Y14.5M-1994		DO NOT SCALE PRINT	
THIRD ANGLE PROJECTION		SCALE	1 : 1
PART DESCRIPTION RUBBER IMPELLER PUMP		PART NUMBER G8001	REV B
ENGRG REL: E2089 DATE: 01-02-03		DWG BY: FLA DATE: 01-02-03	
CHECKED BY: DV DATE: 01-02-03		THIS DRAWING IS THE PROPERTY OF HYPRO AND WITHOUT WRITTEN AUTHORIZATION, MUST NOT BE COPIED OR COMMUNICATED.	