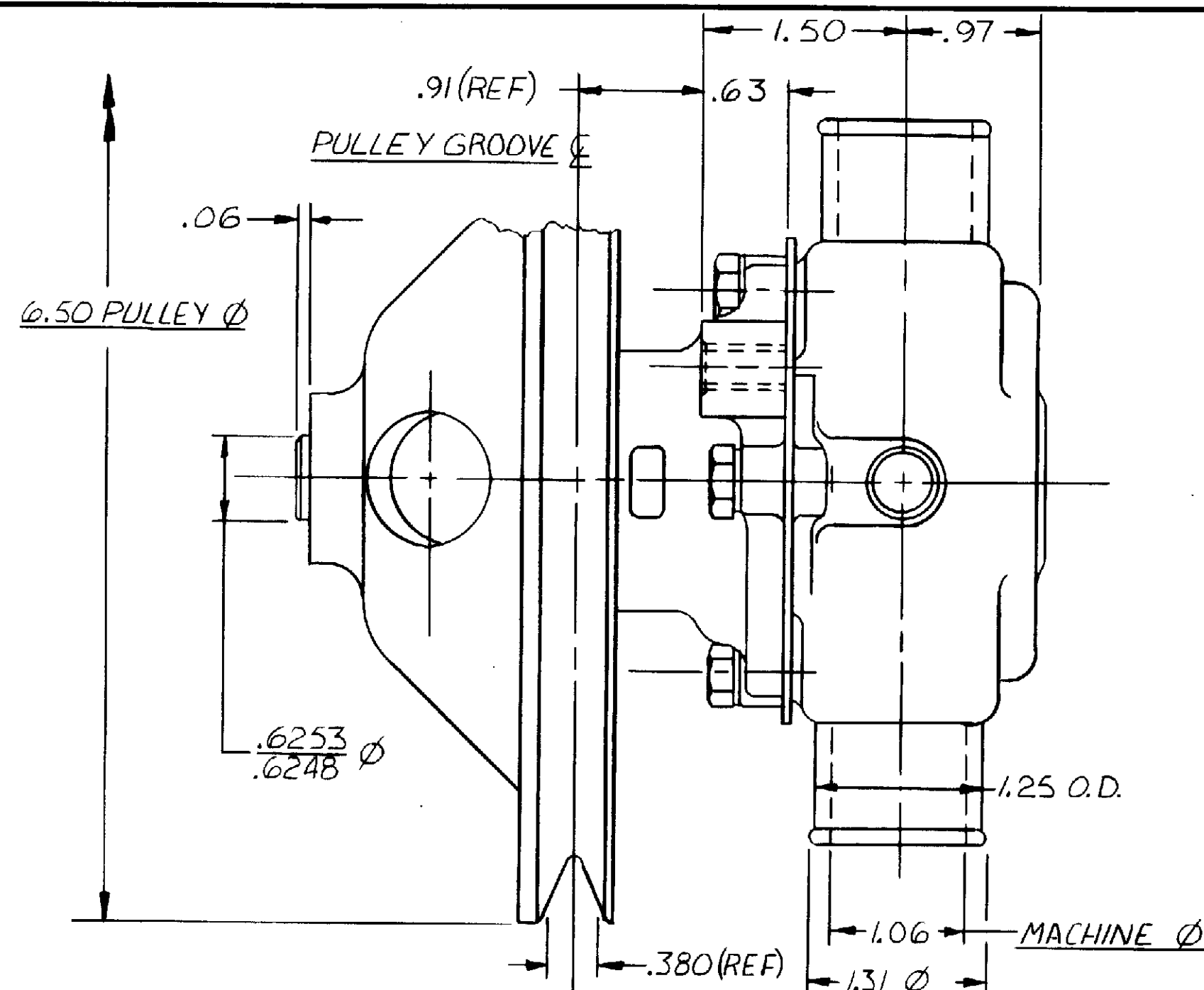


# PARTS LIST

ITEM	PART NO.	DESCRIPTION	REQ'D
1	5133	SPACER BRG.	1
2	4259	RET. RING	2
3	12857	CAPSCREW 1/4-20x3/4	3
4	12710	LOCKWASHER	3
5	12952	HOUSING	1
6	12231	"O" RING	1
7	10515	SCREW	1
8	10929	CAM (.219)	1
9	4432	DRIVE KEY	1
10	12596	SHAFT	1
11	10615	IMPELLER	1
12	4258	RET. RING	2
13	4264	THRUST WASHER	1
14	12856	END PLATE	1
15	12855	GASKET	1
16	12328	BODY	1
17	12256	SEAL SEAT	1
18	12314	MECH. SEAL	1
19	12211	BALL BRG.	2
20	12304	SPACER	1
21	11874	PULLEY	1
17 & 18	12859	SEAL & SEAT ASS'Y SERVICE	
	12946	MAJOR REPAIR KIT	
	11790	MINOR REPAIR KIT	



PACKAGING: E

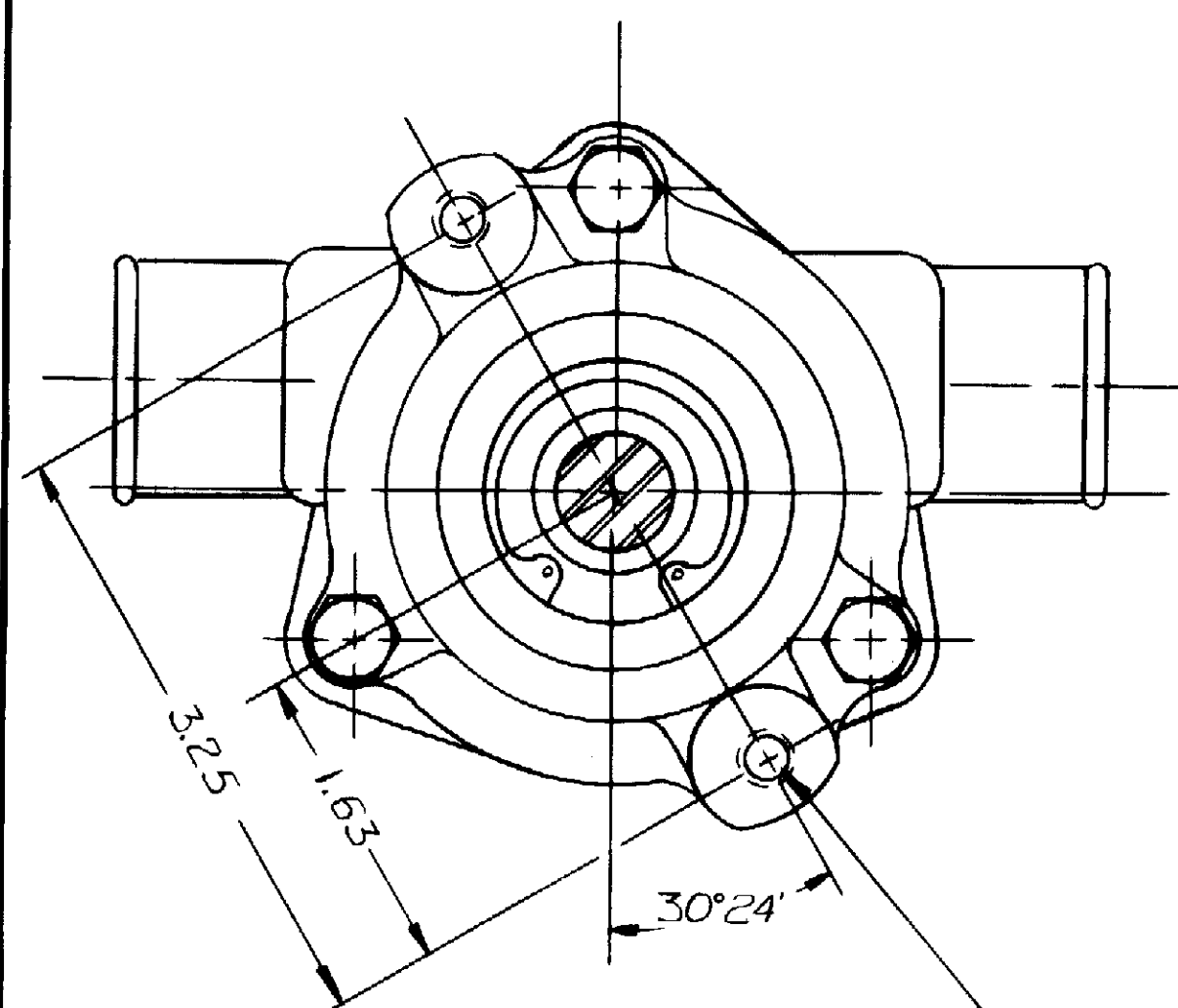
No 11516 PALLET 1 REQ'D  
14120 TUBE, CONTAINER 1 REQ'D  
14122 PADS 6 REQ'D  
18025 INSERTS 4 REQ'D

25 PUMPS/LAYER X 4 LAYERS = 100 PUMPS/PALLET

UNIT PACKAGING

No 17636 CARTON W 1 REQ'D  
12209 LABEL 1 REQ'D

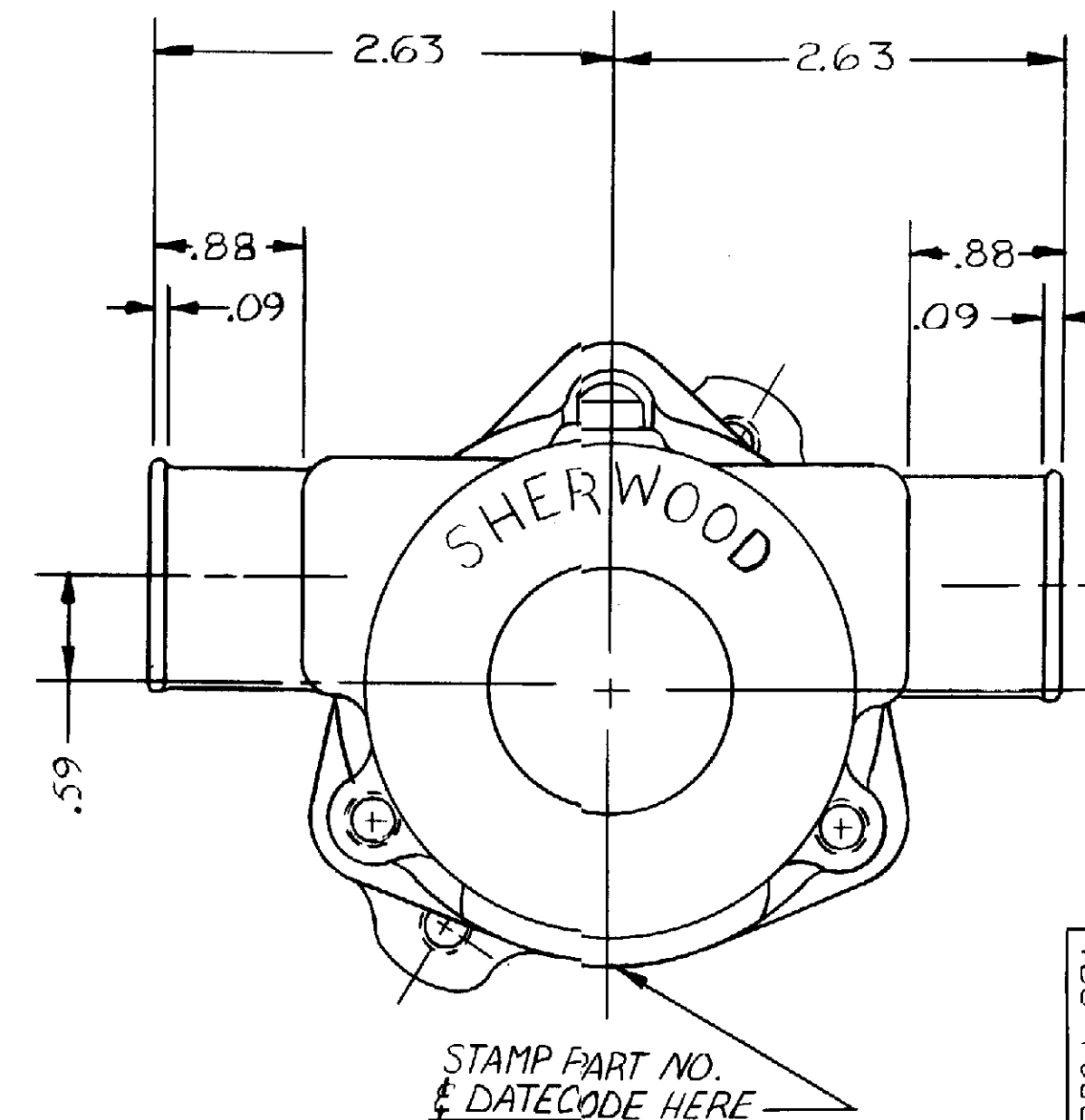
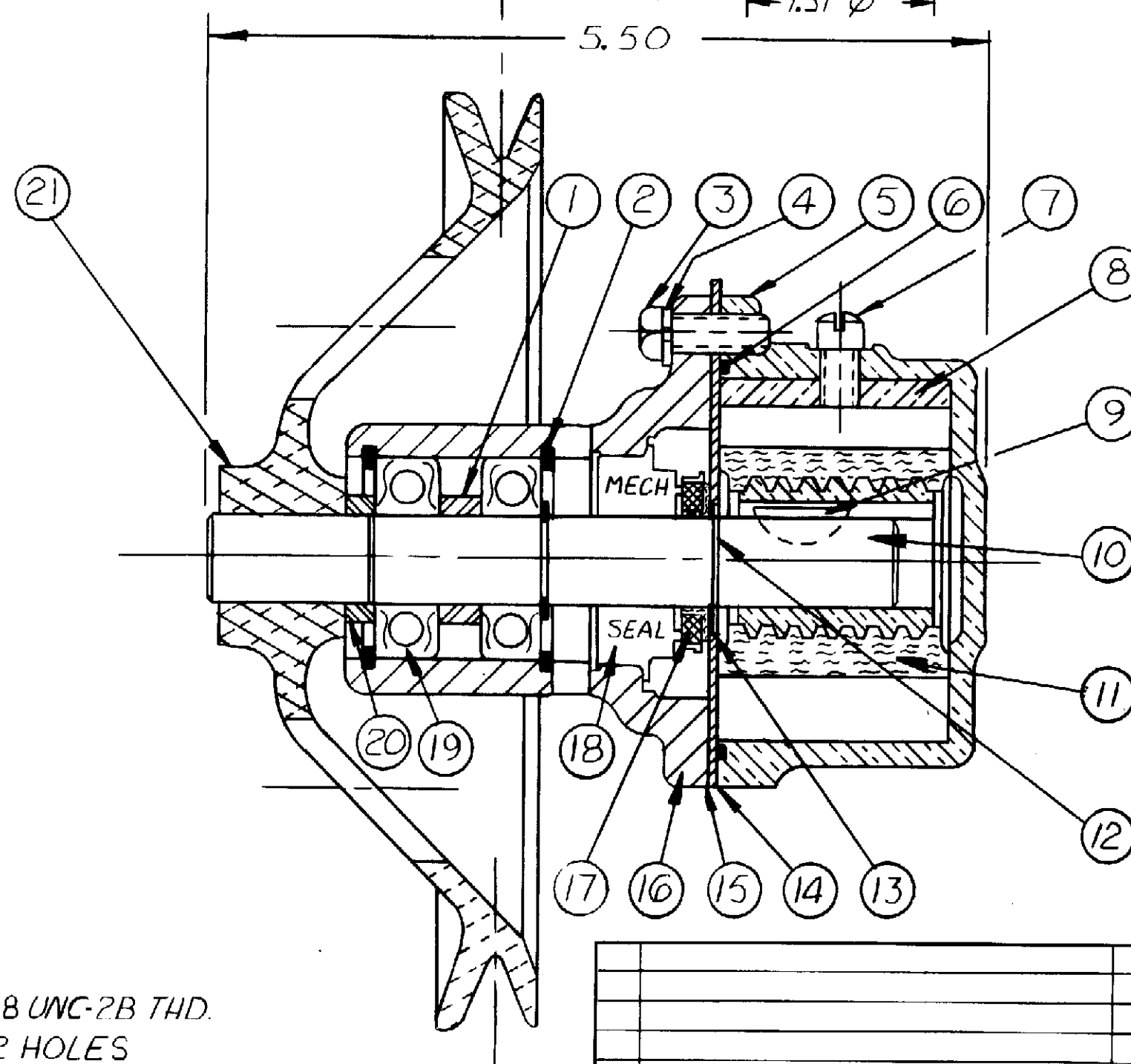
H-85



FLOW CURVE: 76004R-76009R

5/16 -18 UNC-2B THD.  
2 HOLES

O.M.C. NO.: 982760



STAMP PART NO.  
& DATE CODE HERE

UNLESS OTHERWISE SPECIFIED			
CAST DIMENSIONS ± .02			
FILLETS & RADII .06			
FINISH STOCK .07			
MACHINING TOLERANCE, INCHES			
XX ± .01, XXX ± .005			
SURFACE ROUGHNESS			
ANGLES ± 0° 30'			
CORNER BREAKS .01 MAX.			
PARALLISM .001			
FLATNESS .001			
SQUARINESS .001			
CONCENTRICITY .001			
ROUNDNESS .0002			
RUNOUT .001			
REV.	DESCRIPTION	APPR	DATE
E	12859 WAS 12322	SH	7/5/90
D	REDRAWN WITHOUT CHANGE	KB	6-4-87
SHERWOOD			
A DIVISION OF HYPRO CORPORATION			
6331 E. JEFFERSON AVE. • DETROIT, MICHIGAN 48207			
DRAFTSMAN	DATE	CHECKER	DATE
R.I.	10-31-79	RBM	11-1-79
TITLE			
PUMP ASSEMBLY- RUBBER IMPELLER			
MATERIAL		DWG. NO.	
SEE DETAILS		H-85	

PROJ. 281