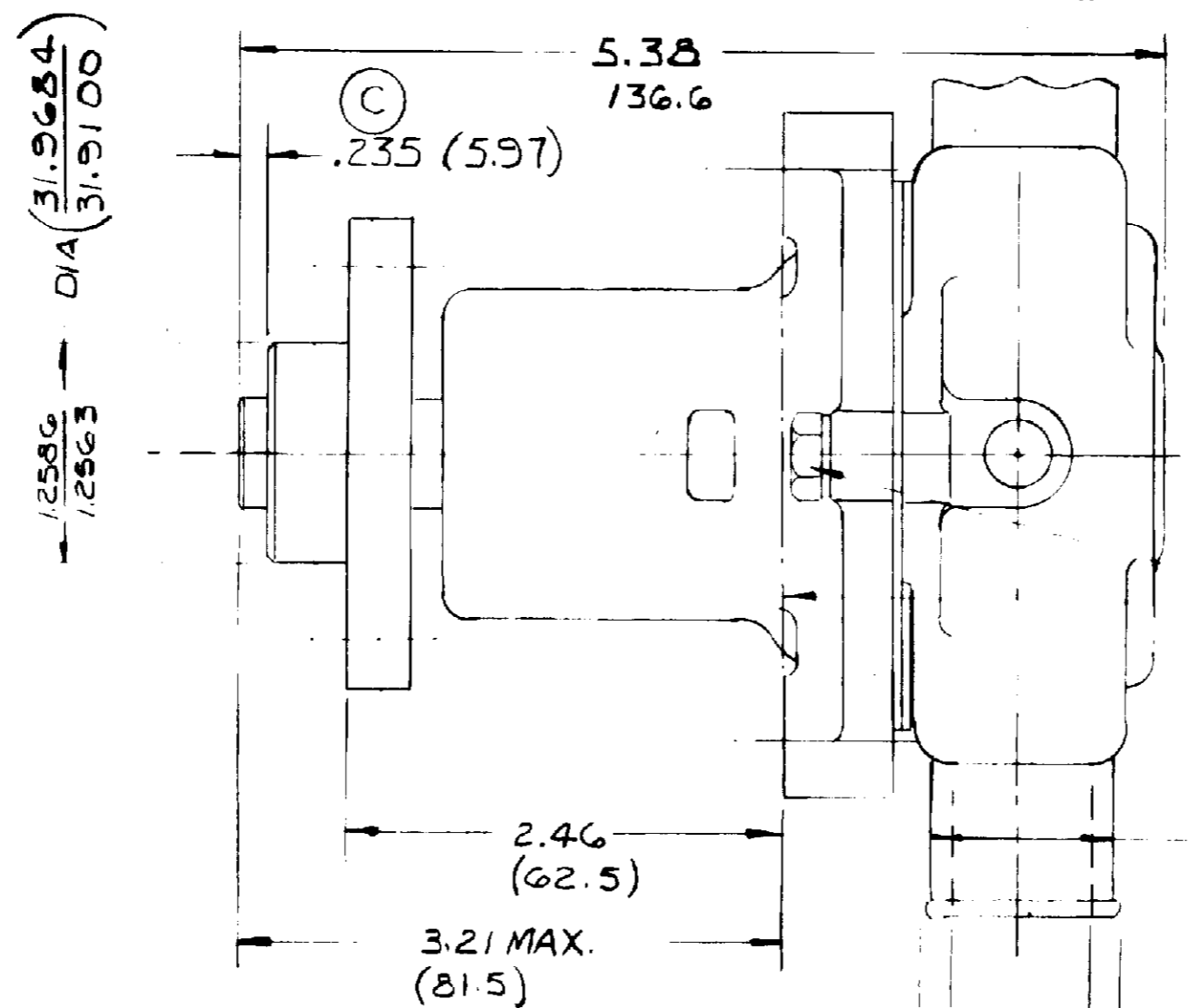


K75

PARTS LIST

ITEM	PART NO.	DESCRIPTION	REQ'D	ONAN No.
1	13363	SHAFT	1	
2	13795	HUB	1	131-0359
3	12211	BEARING	2	
4	5133	SPACER	1	
5	12314	SEAL	1	(D)
6	12256	SEAT	1	
7	13796	BODY (COATED)	1	
8	12855	GASKET	1	
9	12231	O-RING	1	
10	13793	HOUSING	1	
11	4264	WASHER-THRUST	1	
12	4258	RET. RING EXT.	3	
13	4432	KEY-WOODRUFF	1	
14	9959	IMPELLER	1	
15	10627	CAM	1	
16	10515	SCREW 1/4-20 THD	1	
17	12856	END PLATE	1	
18	12710	WASHER LOCK	3	
19	13794	SCREW M6 X 1.00 THD	3	
20	4259	RET. RING INT.	2	
21	13285	TAG-PART NUMBER	1	
22	12322	SEAL & SEAT ASS'Y	SERVICE	
23	13966	MAJOR REPAIR KIT	SERVICE	
24	13967	MINOR REPAIR KIT	SERVICE	132-0276

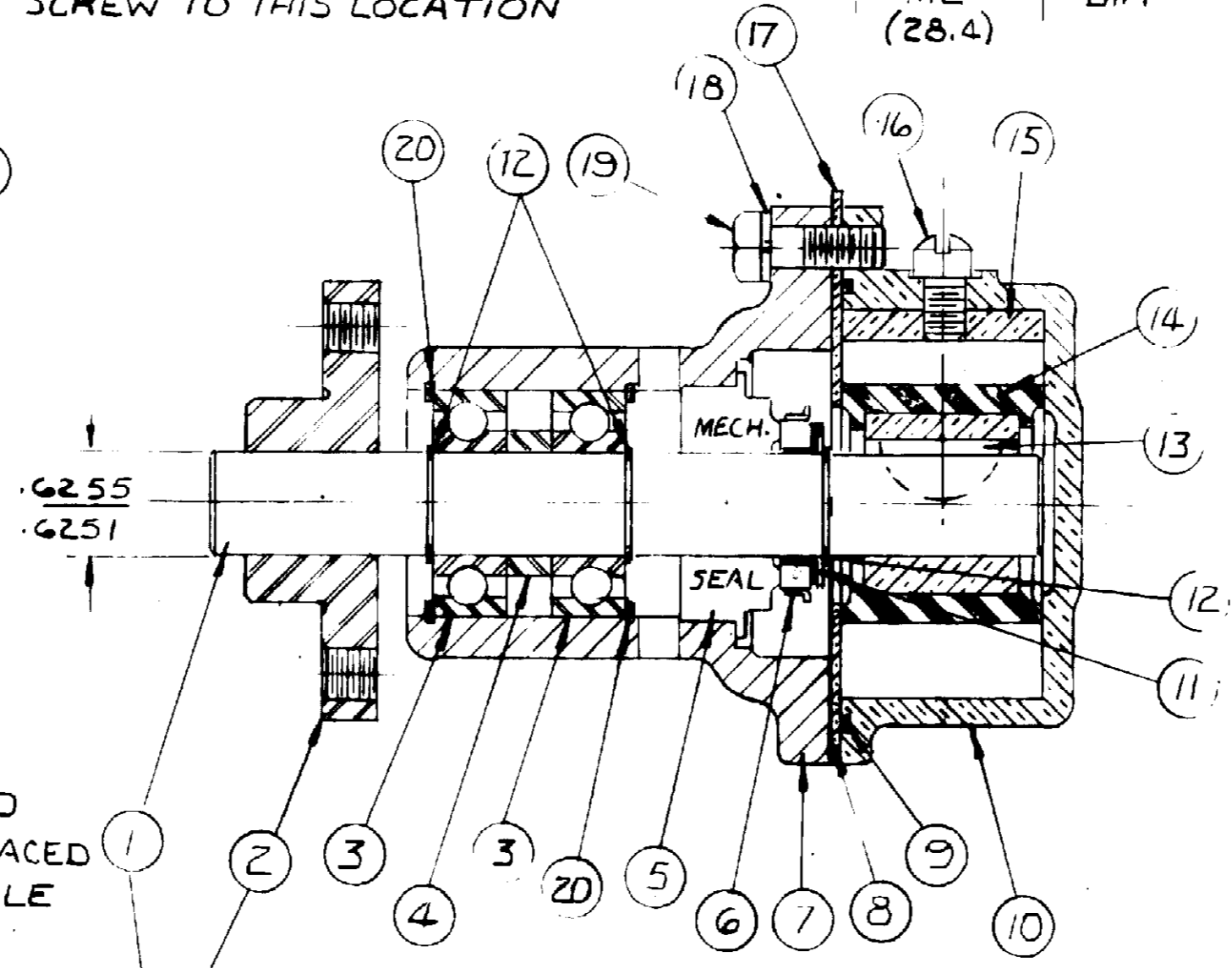
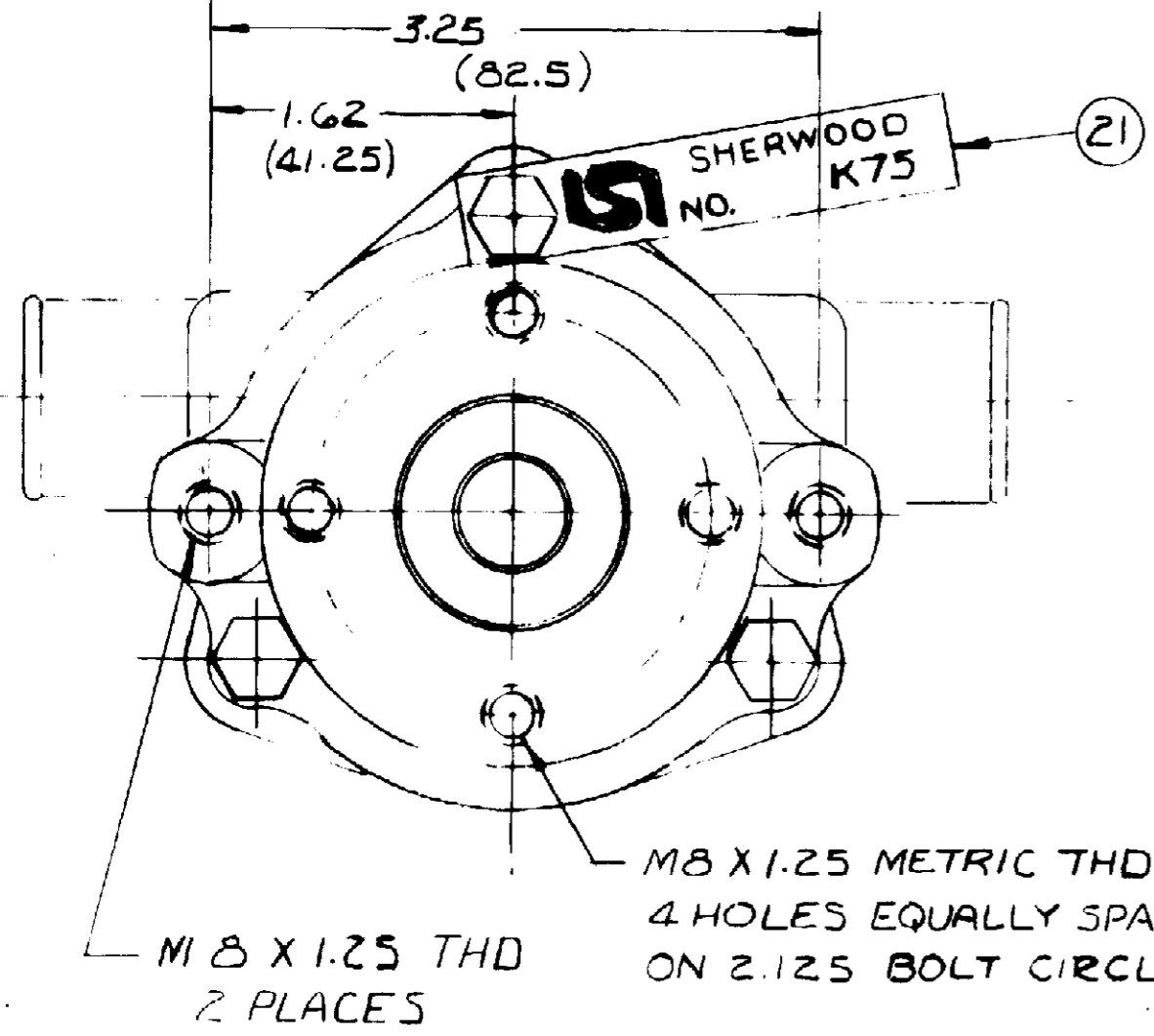
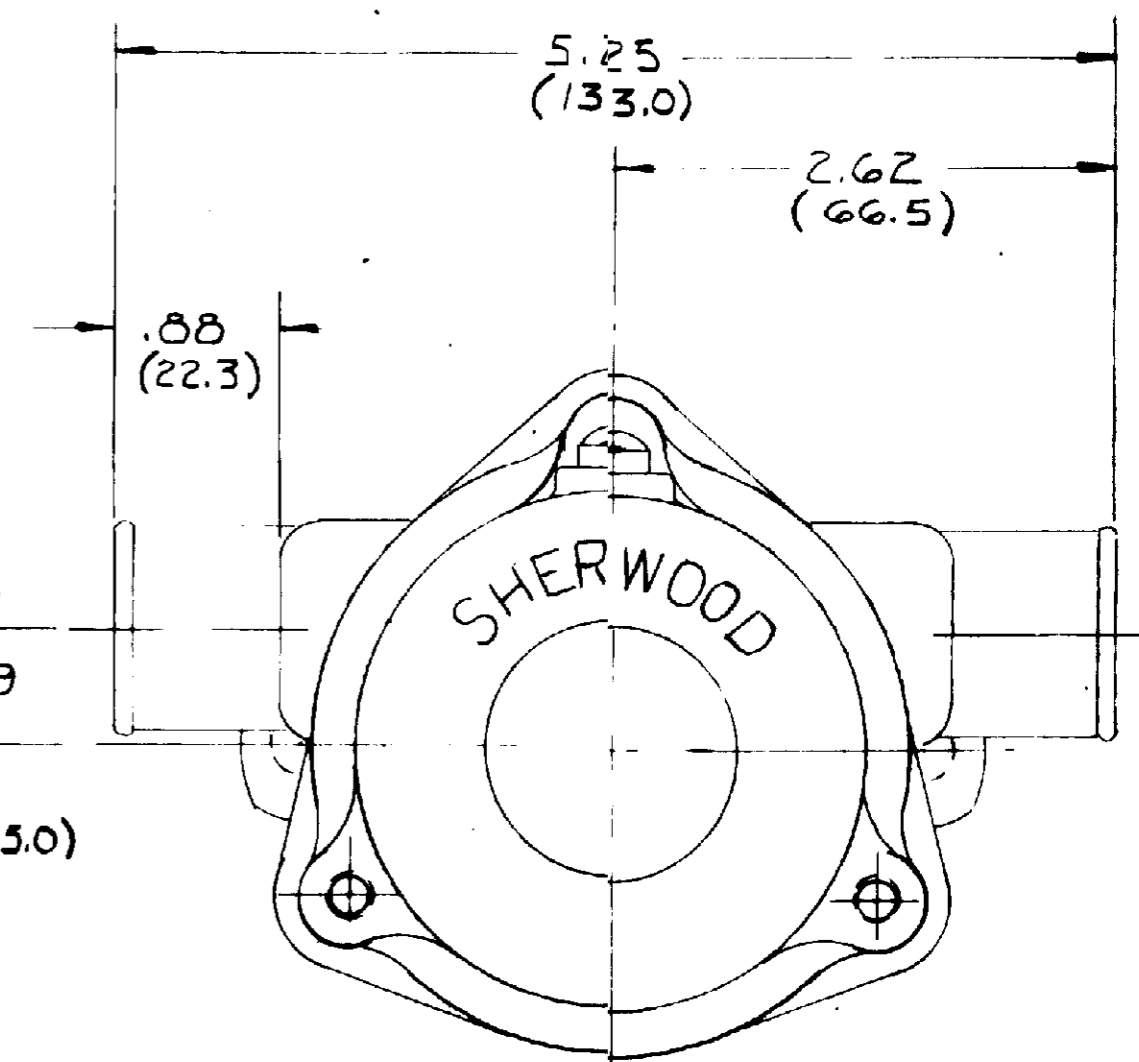


SHIP PUMP ASSEMBLIES TO THE CUSTOMER IN A NUMBER 11 CARTON (WITH INSERTS) 16 PUMPS TO A CARTON

PACKAGING

No 17659	CARTON Y	1	REQ'D
12209	LABEL	1	REQ'D
14486	JIFFY BAG	1	REQ'D

STAMP PUMP ASS'Y No K75 & DATE CODE ON TAG AND ATTACH WITH SCREW TO THIS LOCATION



TO PROVIDE MAXIMUM SHAFT TO HUB BREAK AWAY TORQUE THE SHAFT MUST BE HELD SQUARE WITH THE PULLEY HUB WHEN THEY ARE PRESSED TOGETHER. SHEARING OF METAL WILL REDUCE BREAK AWAY TORQUE

ONAN CORP No 132-0275

FLOW CURVE 72010R - 72011R

REV.	DESCRIPTION	APPR.	DATE
D	12314 WAS 8388	SH	11-11-84
C	.235 WAS .150	RM	1-13-84
A	ONAN 132-0275 WAS 131-0360	RM	4-26-84
A	REPAIR TAGS ADDED	RM	4-26-84

UNLESS OTHERWISE SPECIFIED TOLERANCE TO BE
 CAST DIMENSION ± .020
 MACHINED DIMENSION
 FRACTIONAL ± 0:0
 DECIMAL ± .005
 ANGLES ± 1/2°
 MACHINED SURFACE ROUGHNESS ALLOW 1/16 STOCK ON ALL FINISHED SURFACES FOR MACHINING
 BREAK ALL SHARP EDGES .010 MAX.
 CAST FILLETS AND RADI 1/16 R

SHERWOOD
 A DIVISION OF HYPOCORP
 6801 E. JEFFERSON AVE. - DENVER, CO 80231

DRAFTSMAN	DATE	CHECKER	DATE	APP'D
ARM	4-26-84			

TITLE: **PUMP ASSEMBLY**
 MATERIAL: **SEE DRAWING**
 DWG NO: **K75**

M8 X 1.25