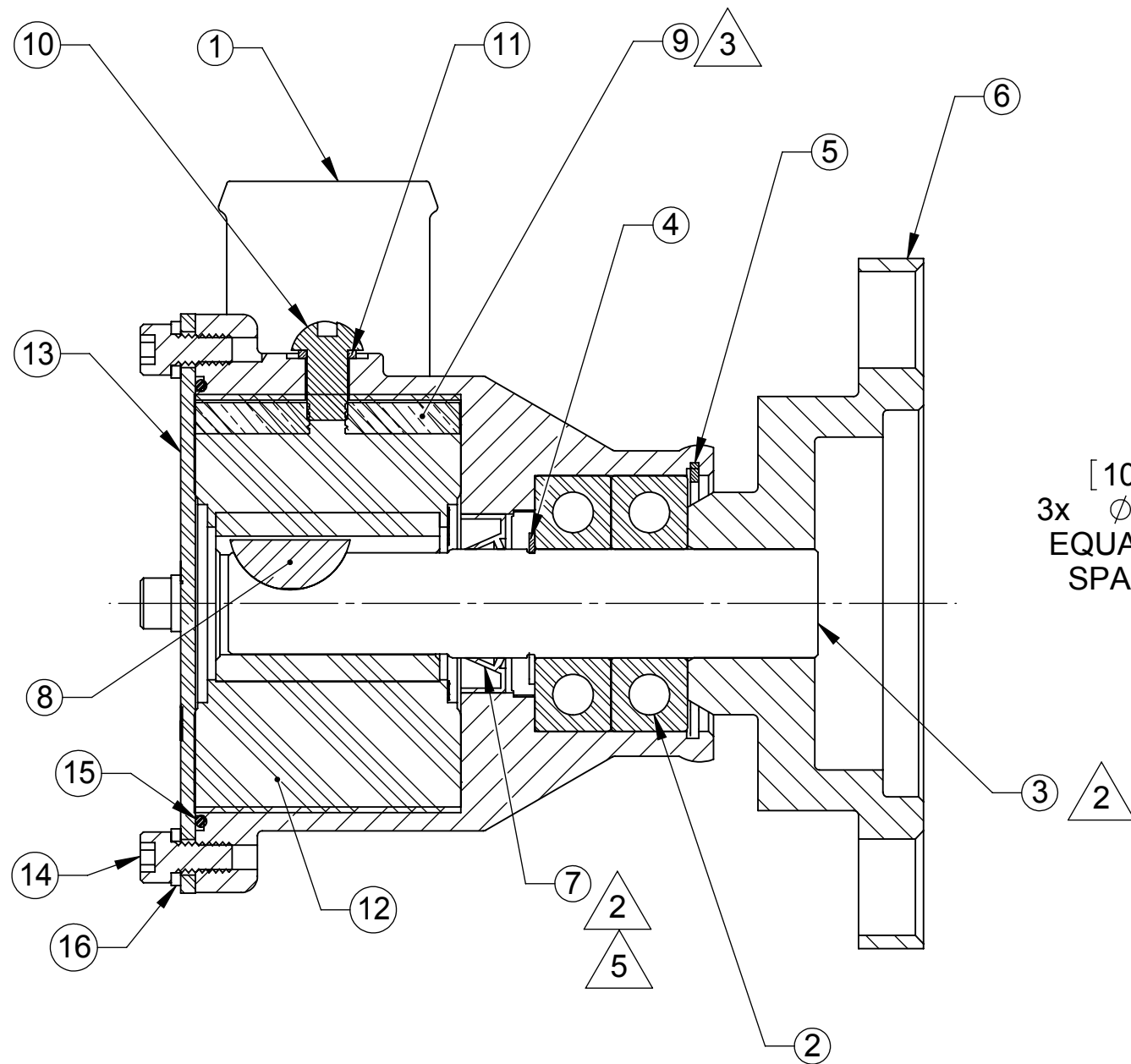
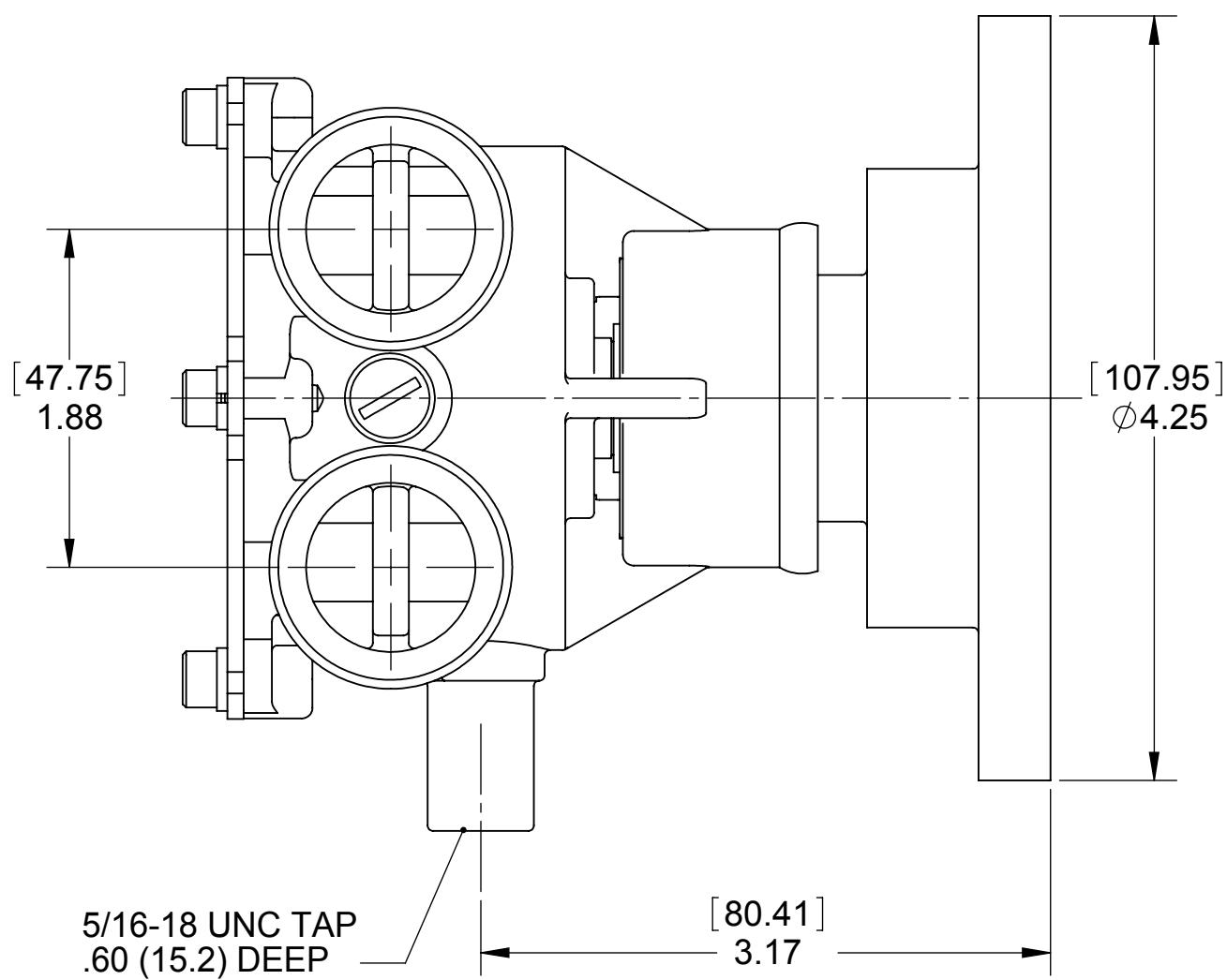
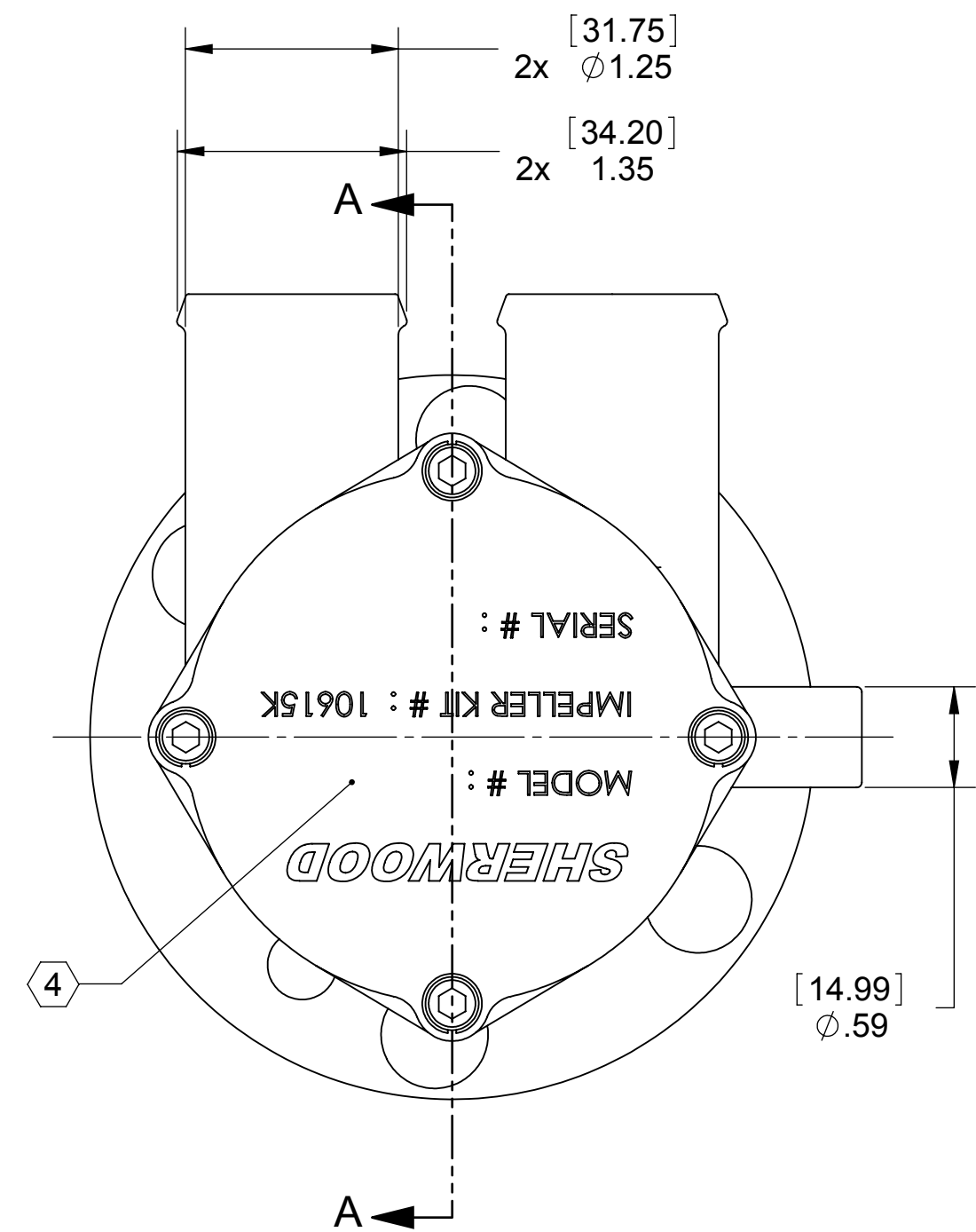


ITEM NO.	PART NUMBER	DESCRIPTION	QTY.
1	21378	BODY	1
2	08490	BEARING	2
3	19308	SHAFT	1
4	06837	RET. RING	1
5	05126	RET. RING	1
6	19275	HUB	1
7	18652	SEAL, LIP	1
8	04432	WOODRUFF KEY	1
9	10944	CAM	1
10	19995	SCREW 1/4-20 ROUND HD	1
11	19996	CAM WASHER	1
12	10615	RUBBER IMPELLER	1
13	21120	COVER PLATE	1
14	2220-0099	SHCS #10-24UNC x 3/8	4
15	12231	O-RING	1
16	00343	LOCK WASHER	4

(B)



SECTION A-A

- (C) NOTES:
- (E) 1. REMOVED NOTE, SEE REV. E
2. APPLY SIL-GLYDE TO SEAL LIP I.D. PRIOR TO SHAFT INSTALLATION.
3. APPLY BEAD OF PERMATEX AROUND CAM SCREW THREADED HOLE PRIOR TO ASSEMBLY.
4. STAMP "P105" AND DATE CODE IN LOCATION AS SHOWN.
- (D) 5. APPLY SIL-GLYDE TO INSIDE LIP OF SEAL, LIP.

PART NUMBER

P105

E	7036	REMOVED NOTE 1.	JJH	8/22/2008
D	5942	ADDED NOTE 5	DV	10/11/2006
C	5763	REVISED NOTES, CHG COVER STAMP TO P105, WAS RA0570026	RJE	7/10/2006
B	3765	ITEM 16 WAS 00344 SCREW	DV	10/29/2003
A	1931	RELEASE NEW ASSY TO PRODUCTION	DV	8/2/2002
REV.	ECN	DESCRIPTION	CHKD	DATE

SHERWOOD A Div. of Hypro Corporation A PENTAIR COMPANY 375 Fifth Avenue NW, New Brighton, MN 55112, (651) 766-6300		REPLACES PART NO.		REV.
DRAWING BASED ON ASME Y14.5M-1994		DO NOT SCALE PRINT		SIZE C
THIRD ANGLE PROJECTION		SCALE 1:1		SHEET NUMBER 1 OF 1
PART DESCRIPTION		APPROVED BY: DATE:		THIS DRAWING IS THE PROPERTY OF HYPRO, AND WITHOUT WRITTEN AUTHORIZATION, MUST NOT BE COPIED OR COMMUNICATED
RUBBER IMPELLER PUMP		PART NUMBER		REV. E
		P105		